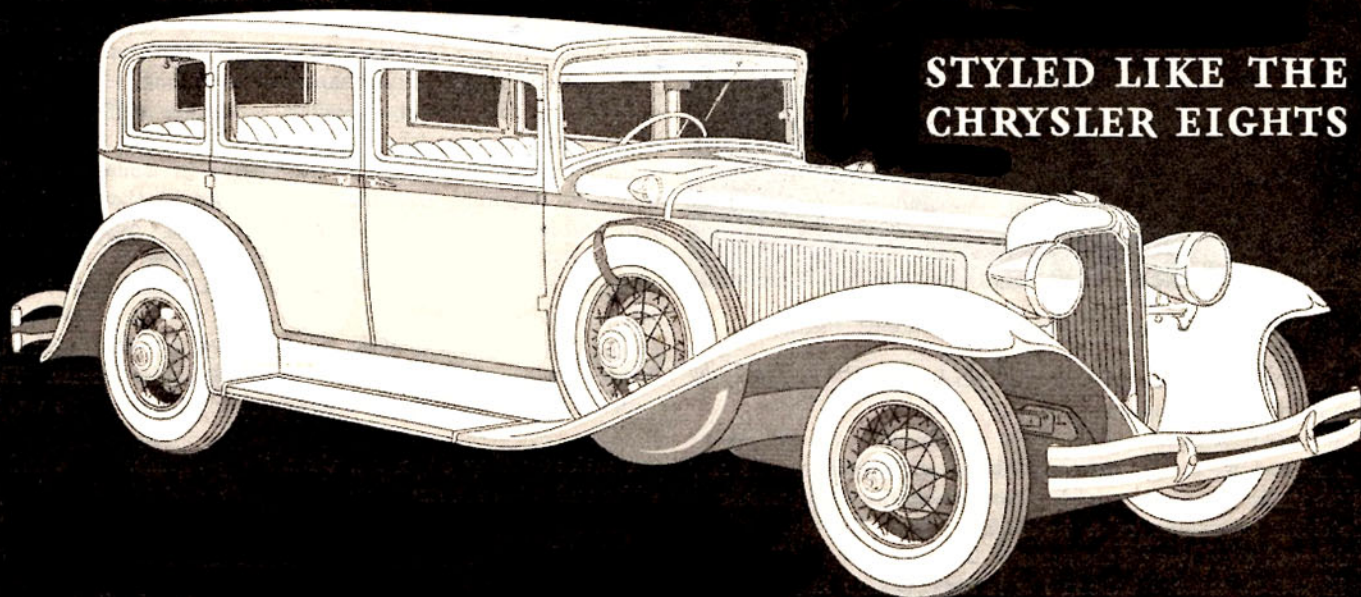


AN ENTIRELY

New

CHRYSLER SIX



STYLED LIKE THE
CHRYSLER EIGHTS



CHRYSLER now proudly presents a new Chrysler Six styled in the manner of the Chrysler Straight Eights — a very remarkable new Six at a very remarkable low price. It has a heavy double-drop frame with the great advantage of an extremely low center of gravity. The low-slung unity of chassis and body results in unusual smartness, perfect balance, greater steadiness and real safety at all speeds.

It has a long, easy-riding wheelbase of 116 inches . . . It has a big 70-horse-

power engine . . . It has a modern safety body of strong steel, solidly welded, with no joints to cause squeaks . . . It has self-equalizing weatherproof internal hydraulic brakes . . . It has hydraulic shock absorbers . . . It has adjustable front seat . . . It has five wire wheels at no extra cost . . . It has everything it needs to be the outstanding value among sixes. The performance of the new Chrysler Six is really something to experience.

Something to get excited about.
Something that says better than words can say: "This is a great motor car."

AT A LOW PRICE
\$895

SEDAN — F. O. B. FACTORY