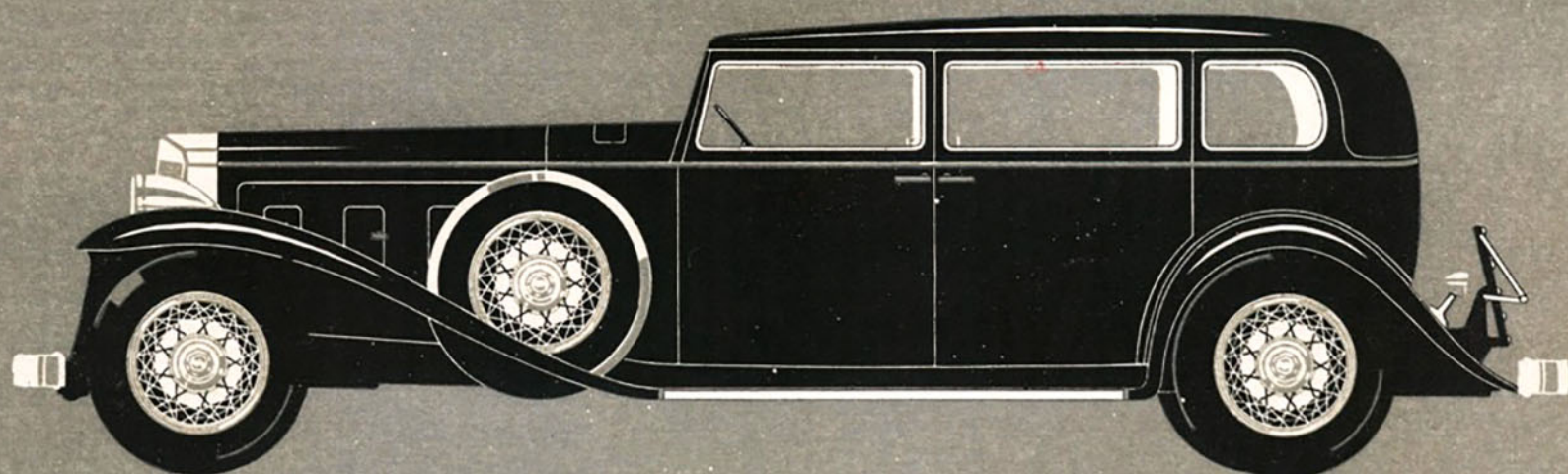


MARMON SIXTEEN



IN DESIGN AND ENGINEERING, THE WORLD'S MOST ADVANCED MOTOR CAR

The Marmon Sixteen looks like no other car. It borrows little from the past. It will lend much to the future. It is the one example of unhampered co-ordination of effort by artist and engineer. Its 200-horsepower all-aluminum engine is viewed by the technical world as an accomplishment of prime importance by Howard C. Marmon. Its modern beauty interprets the true spirit of its performance. A mere sight of it promises more than any other car has ever promised. On display in leading cities. Wheelbase, 145 inches. Prices under \$5000. Marmon Motor Car Company.