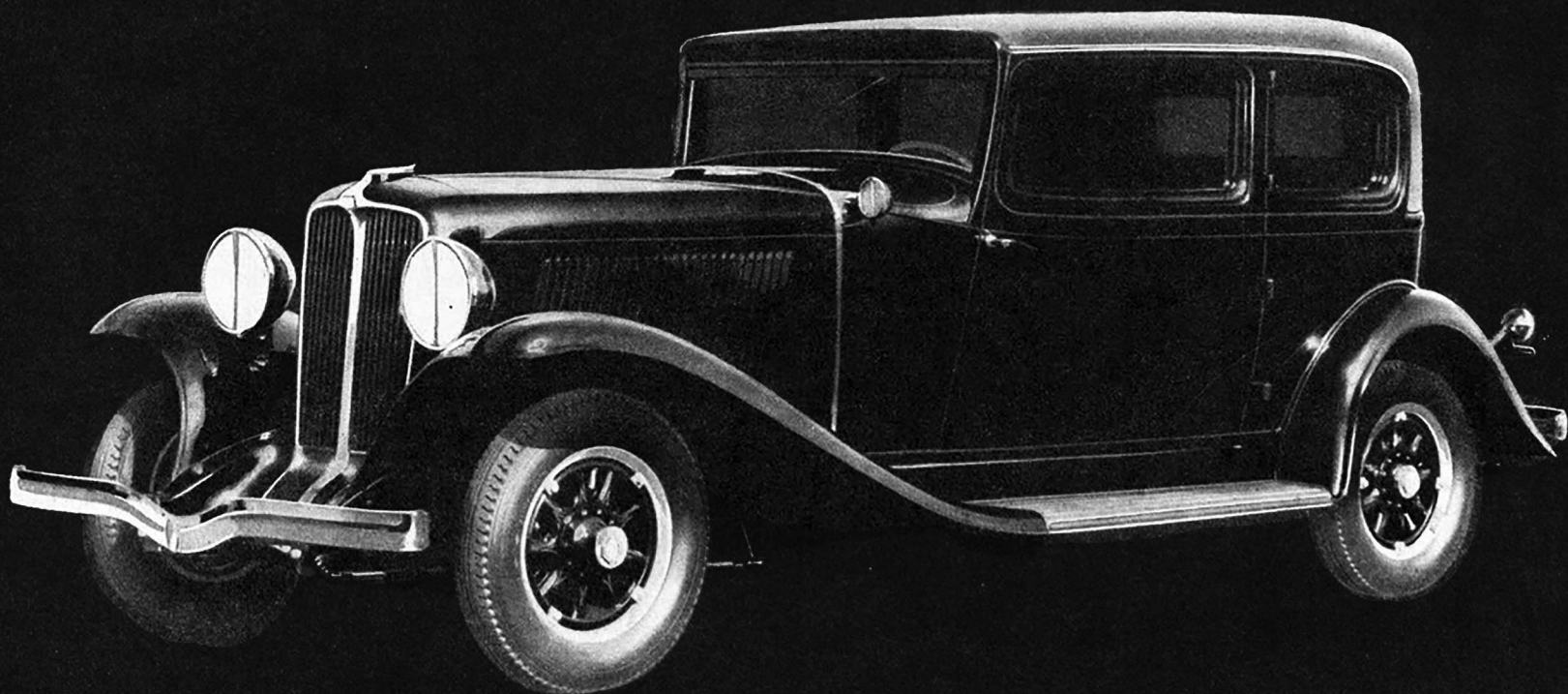


# AUBURN

POWERED BY LYCOMING



A manufacturer's success is a public trust. Each step in upward growth must solidify the foundation for even greater public service. Auburn has enjoyed a rapidly increasing car-owner acceptance during the past six years. It is our bonded obligation to make Auburn's success retroactive to the public, in the form of continually better merchandise at lower commensurate cost. The new Auburn Straight Eight models represent our utmost effort to deserve past confidence and to merit future growth.



*The car illustrated above is the Five-Passenger 2-Door Brougham. Silent-Constant Mesh in Standard Models. Also Free Wheeling in Custom Models*  
Custom models: 8-98A 5-passenger, 2-door Brougham \$1145; Business Man's Coupe \$1195; Convertible Cabriolet \$1245; 4-door Full Sedan \$1195; Convertible Phaeton Sedan \$1345. All Custom Models include Free Wheeling. Standard models: 8-98 5-passenger, 2-door Brougham \$945; 4-door Full Sedan \$995; Convertible Cabriolet \$1045; Convertible Phaeton Sedan \$1145; Business Man's Coupe \$995. All prices f.o.b. Connersville, Indiana. Equipment other than standard, at extra cost. AUBURN AUTOMOBILE COMPANY, AUBURN, INDIANA