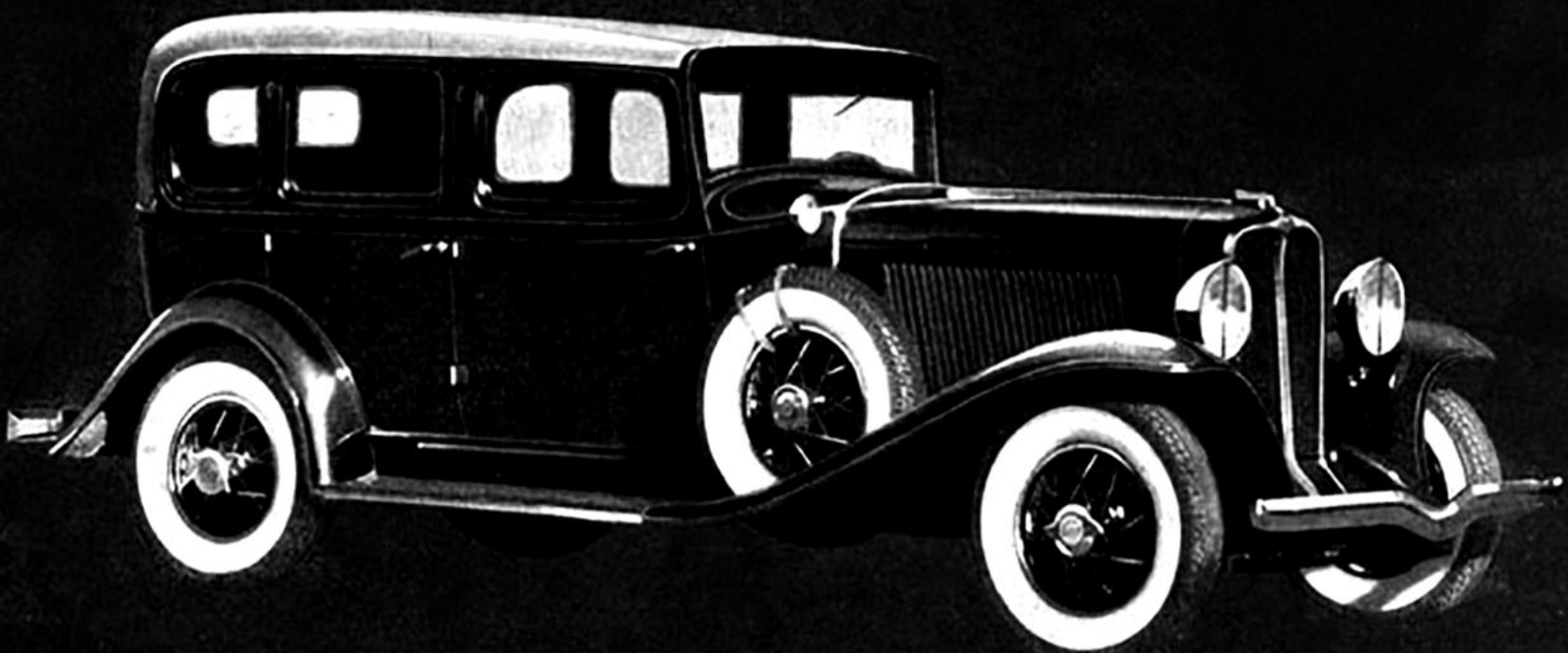




The secret of Auburn's success is very simple. It lies in building a better automobile and then selling it for less money. Anyone can verify this claim by making comparisons. That is why many thousands more Auburn cars have been sold this year than during all of last year. As a result of the enthusiasm of Auburn owners, the world has learned to expect more from Auburn. To prove worthy of its position of leadership Auburn's vigilance is never relaxed.

AUBURN

POWERED BY LYCOMING



The car illustrated above is the 5-passenger Sedan. Silent-Constant Mesh in Standard Models. All Custom Models include Free Wheeling.

Custom models 8-98A		Standard models 8-98		Custom models 8-98A		Standard models 8-98	
5-passenger, 2-door Brougham	\$1165	5-passenger, 2-door Brougham	\$ 945	5-passenger, 2-door Brougham	\$1245	5-passenger, 2-door Brougham	\$1445
Business Man's Coupe	1195	4-door Full Sedan	995	Business Man's Coupe	1990	4-door Full Sedan	1515
Convertible Cabriolet	1245	Convertible Cabriolet	1045	Convertible Cabriolet	2070	Convertible Cabriolet	1590
4-door Full Sedan	1195	Convertible Phaeton Sedan	1145	4-door Full Sedan	1990	Convertible Phaeton Sedan	1715
Convertible Phaeton Sedan	1345	Business Man's Coupe	995	Convertible Phaeton Sedan	2210	Business Man's Coupe	1515
7-passenger Sedan	1395	7-passenger Sedan	1195	7-passenger Sedan	2325	7-passenger Sedan	1975

All prices f. o. b. factory. Equipment other than standard, and wire wheels, at extra cost. AUBURN AUTOMOBILE COMPANY, AUBURN, INDIANA. Prices subject to change without notice.