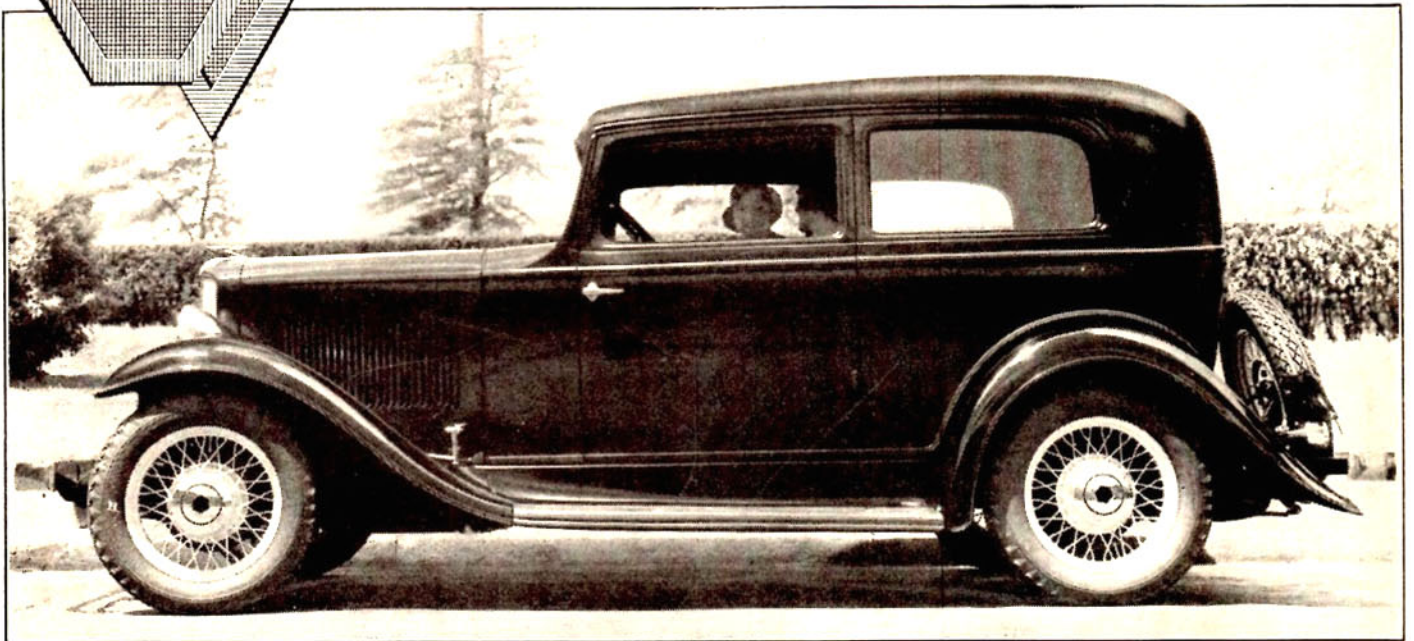
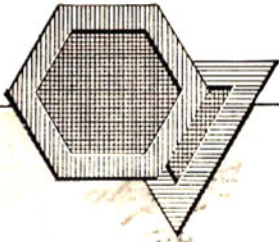


New Cars New Features New Lower Prices

HUDSON and ESSEX Distributors and Dealers have just had their opportunities for more sales and more profits increased by the addition of the new Standard Series Essex and new features in both the famous Pacemaker Hudson and Essex lines . . . The new Standard Series Essex is in all essentials the worthy companion of the Pacemaker Essex Super-Six . . . It is produced to market at a new low price, and as such is a direct contribution to the times . . . Latest Hudson and Essex features include the new Automatic Oil-Cushion Clutch . . . See the Hudson-Essex lines and investigate "the soundest and most liberal franchise in the industry." Hudson Motor Car Company, Detroit, Michigan.



THE NEW STANDARD SERIES 5-PASSENGER ESSEX COACH, \$665

2-Passenger Coupe, \$660

4-Passenger Coupe, \$710

3-Window Sedan, \$735

All prices F. O. B. Detroit

HUDSON *and* ESSEX

Pacemakers