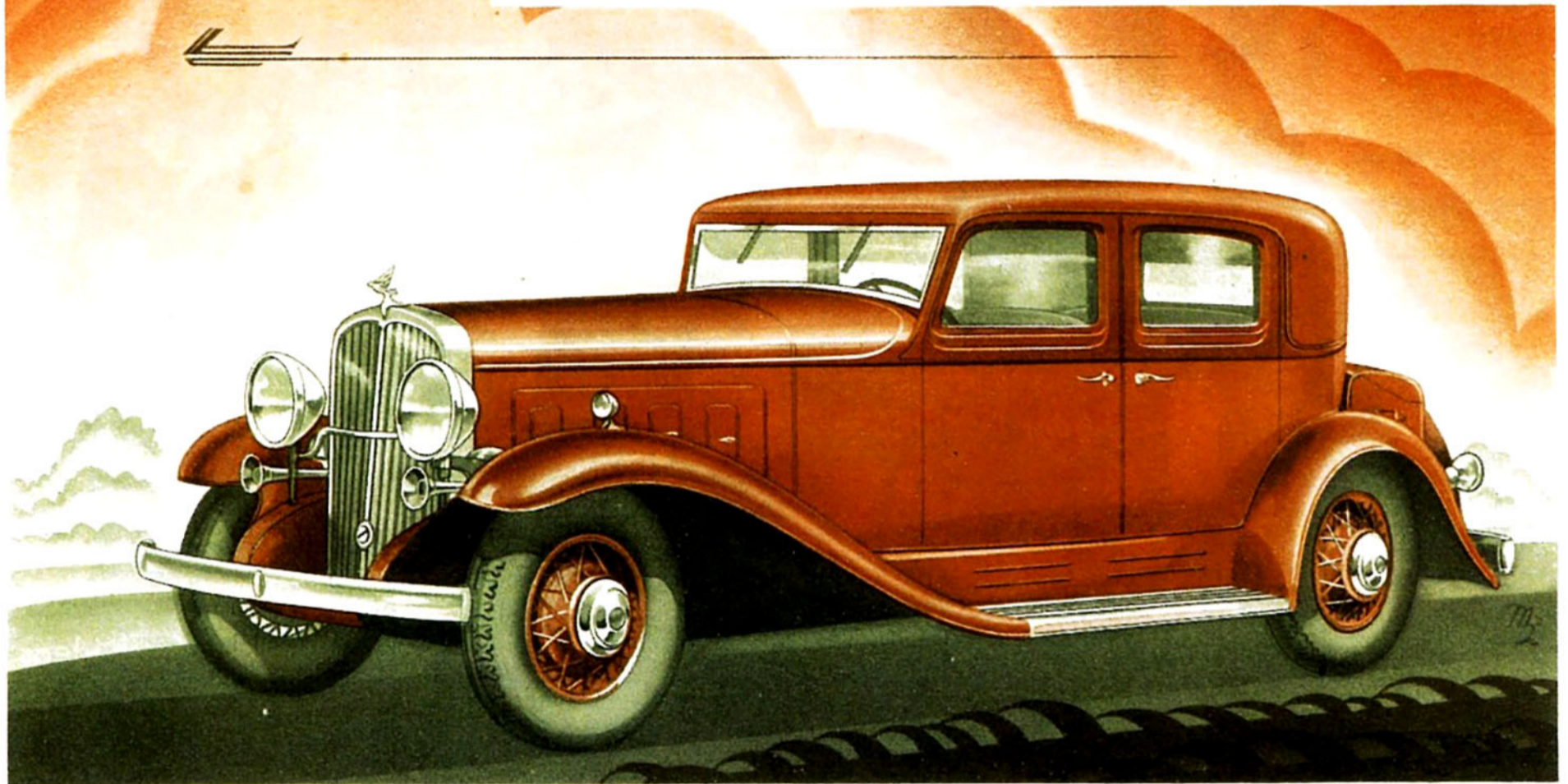




FRANKLIN Supercharger

NO MORE GASPING ACCELERATION—
NOW TURBINE-LIKE POWER AND THRILLS
POSSIBLE ONLY WITH AIR-COOLING



ONE RIDE—and you'll understand why the new Supercharged Airman is *the engineering sensation of the year*.

The Supercharged power of modern airplanes, of custom-engineered cars, of speedway and fast boat events, now has its counterpart in Franklin. To thrill you! To astonish you! To awaken you to the possibilities of future motor travel.

The SUPERCHARGER packs the ingoing charge of gas into every cylinder *equally*—and in maximum quantity. In other automobile engines, gas is sucked in. In the Franklin airplane engine it is *forced* in under pressure. No more starved cylinders. No more gasping accel-

eration. No more lumpy performance. Now turbine-power smoothness, dashing pick-up possible only with supercharging, and a new standard of economical engine performance.

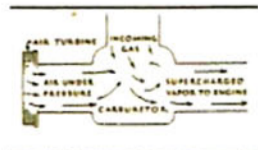
Franklin gives you SPOT-CONTROLLED temperature! A sensational achievement in greater power efficiency and perfect cooling made possible by PRESSURE air-cooling. Franklin is the car you can drive *all day at high speed* without overheating or loss of power—the only car with no water to boil, freeze or leak. Spot-controlled temperature makes Franklin valves the coolest of all automobile engines.

The Franklin airplane engine combined with

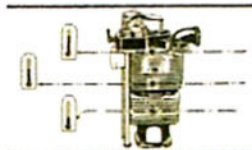
supercharging, spot-controlled temperature and pressure air-cooling presents the most progressive powerplant known to engineers. These things are exclusive to Franklin.

In addition you will find in Franklin: free-wheeling, synco-mesh, selective ride control, key-switch starter, non-shatter glass, full-elliptic springs, sound-proof insulation, cushion engine mounting, intake silencer and aero streamlining. You expect some of these things in any fine car, but only in Franklin do you find ALL of them.

See the beauty of this new Supercharged Airman—and by all means take at least ONE RIDE! Franklin Automobile Company, Syracuse, N. Y.

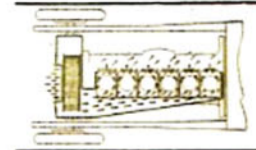


By forcing in the gas the supercharger smooths out and evens up a responsive flow of extra power.



Each spot on each cylinder is the same temperature as the corresponding spot on other cylinders.

FRANKLIN
Supercharged Airman
\$ 2250 FOB FACTORY



Cooling air is constantly FORCED over the Franklin engine, at a 110 mile an hour rate at high speeds.



Motor principles making possible rapid aviation progress are applied to Franklin with amazing results.