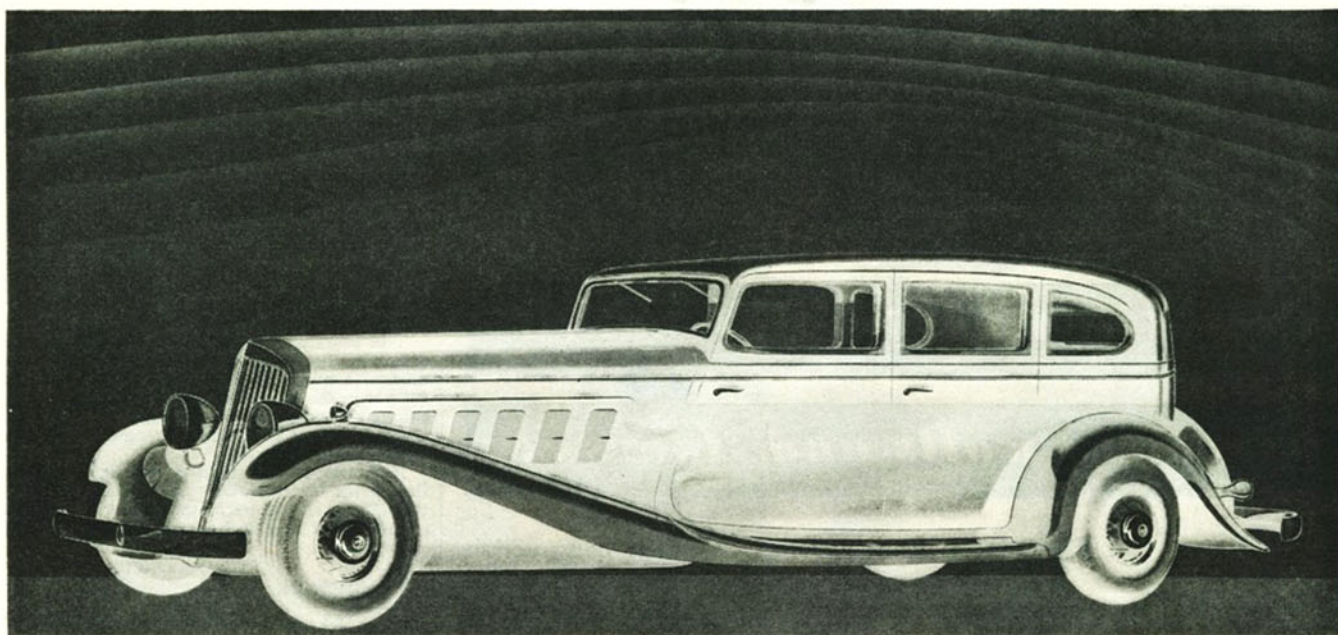




ANNOUNCING THE
SUPERCHARGED AIR-COOLED
Twelve Cylinder
FRANKLIN



For four years Franklin engineers have studied, experimented, tested, proved — and now present the Supercharged, Air-cooled, Twelve Cylinder Franklin. For the first time in a motor car, this new Air-cooled Twelve incorporates the one thing that has given aviation its greatest impetus—the high-powered, multi-cylinder, air-cooled engine.

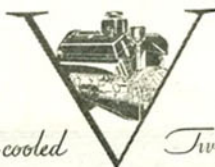
To see the car is to feel instantly the freshness and brilliance that LeBaron has styled into the Franklin Twelve—the year's pattern of beauty and luxury. And when you drive this responsive, amply proportioned car of 144-inch wheelbase, that feeling is immediately transformed into thrilling admiration for the sensational performance which carries you to new luxury in travel.

The Supercharged 150 horsepower air-cooled engine is extremely simple in operation, requiring 100 less parts than comparable water-cooled engines.

So accessible is the engine and so free of complication that low maintenance becomes an important feature. The Supercharger achieves flowing, turbine-like power, smoothness and acceleration by forcing a full charge of perfect mixture into every cylinder equally. Actual tests show gas consumption is appreciably lower. And engine life is much greater, for even at high touring speeds the engine is purring effortlessly. Pressure air-cooling adds greatly to the economical efficiency of the engine and allows you to drive all day at high speed without overheating or loss of power. In Franklin there is no water to boil, freeze or leak.

You are invited to examine and drive the new Supercharged Twelve as an example of the really modern motor car.

Franklin also offers the new Supercharged Airman, with 132-inch wheelbase, 100 horsepower engine. Franklin Automobile Company, Syracuse, New York.



Air-cooled

Twelve