

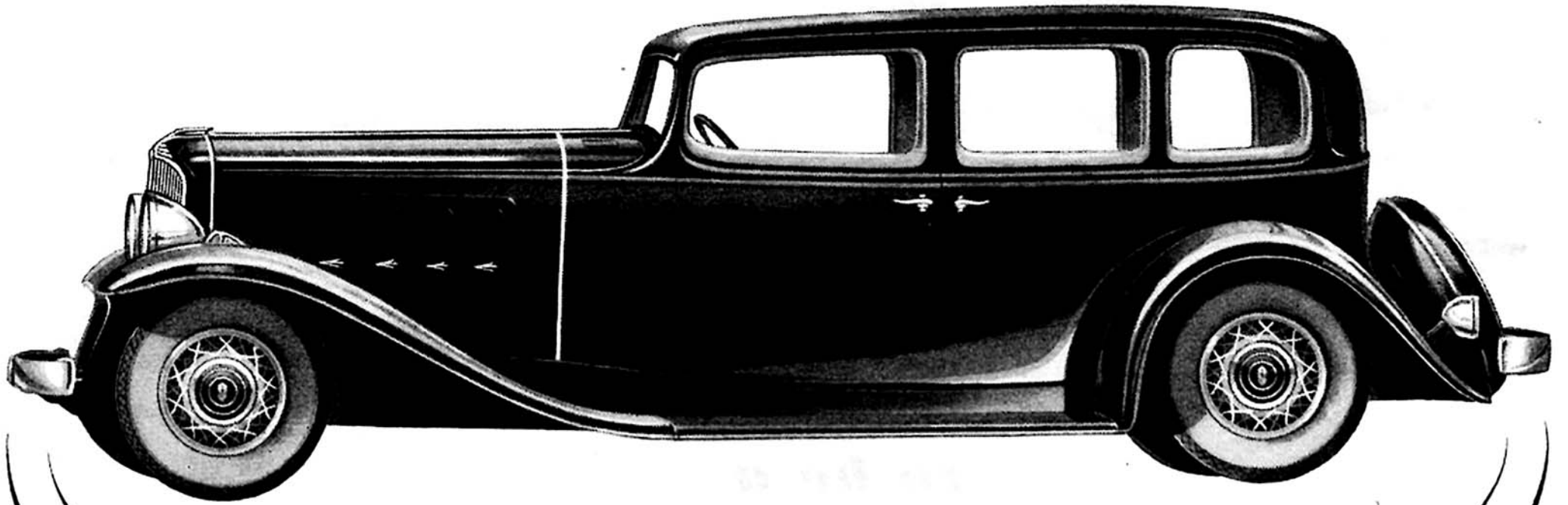
☆

☆

NASH

STEPS OUT AHEAD

WITH 5 NEW SERIES



Why Shouldn't we Shop for Motor Cars just as we Shop for Clothes

BY VIRGINIA LEE CLARK

I've always been a motor car shopper, poking around Motor Shows and Motor Showrooms to see what motor car designers have given us that's new.

This year there are a lot of fine cars with any number of interesting new features, but my pick of all is Nash. Nash designers, in my feminine opinion, have achieved, in their cars, a new note in motor car beauty, a lot more comfort, and considerably more personality and style-originality.

First of all, these new Nash cars that I've just seen (*they've just put them on display*) have a becoming new lowness. Their lines are very smart, with a most interesting new sweep to the profile that reduces wind resistance and lets you slip along a little faster without burning so much gasoline — Slip-Stream Body design, they call it.

Nash designers also have widened the bodies of their cars to make the seats and armrests wider. They've put two smart, silver-framed glove and parcel compartments on the instrument board. And they've moved the rear seat forward from its traditional and not-so-comfortable position directly over the rear axle. You know how you hate to ride over the axle in a Pullman car.

Then, they've done any number of things to make their cars more enjoyable to drive. There's a finger-tip driving seat adjustment. And a ride control on the instrument panel which changes the action of the shock absorbers to suit the road and weather.

And another thing I particularly



like is Nash quietness — *Silent Underslung Worm Drive* in the Ambassador, Advanced and Special Eight models — *Silent* gear selection — *Silent* second speed — *Sound-proofed* bodies — *Carburetor silencers* — *exhaust silencers*.

That's enough to give you an idea why I've picked Nash as my new car. Go motor car shopping some day soon, and you'll come home just as enthusiastic about the new Nash as I am.

BIG SIX — 116-inch Wheelbase

STANDARD EIGHT — 121-inch Wheelbase
(illustrated above)

SPECIAL EIGHT — 128-inch Wheelbase

ADVANCED EIGHT — 133-inch Wheelbase

AMBASSADOR EIGHT — 142-inch Wheelbase