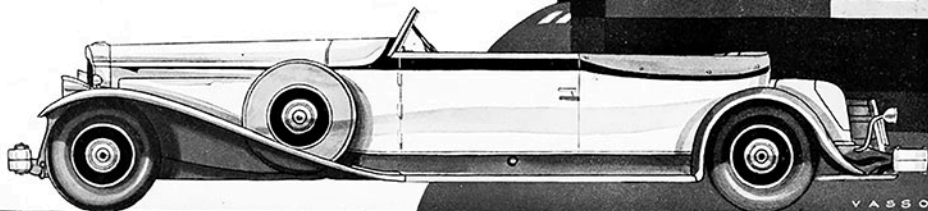


A NEW ARISTOCRAT OF THE METROPOLIS

OWNERS of the new Packard enjoy a luxury of motor travel that has never before existed. New Packard bodies are lower, with lines refined and modernized—interiors newly insulated against sound and temperature. Wheelbases are longer—tread wider. Power is greater, smoother, quieter. The new transmission is four-speed, synchromesh. And the new and exclusive *Ride Control* permits instant shock absorber adjustment from the dash—to compensate for varying numbers of passengers, temperatures and road conditions.

Only by *driving* and *riding* in the new Packard can you appreciate its performance, its roadability—and above all its new and supreme *comfort*. When may we demonstrate the new Aristocrat of the Metropolis?

ASK THE MAN WHO OWNS ONE



PACKARD

PACKARD MOTOR CAR COMPANY OF NEW YORK

Broadway at 61st Street

BRONX: 696 East Fordham Road

PARK AVENUE PACKARD, Inc.: 6 East 57th Street

Eleventh Avenue at 54th Street

BROOKLYN: Atlantic at Clason Avenue

WEST END PACKARD CO., Inc.: Broadway at 106th Street