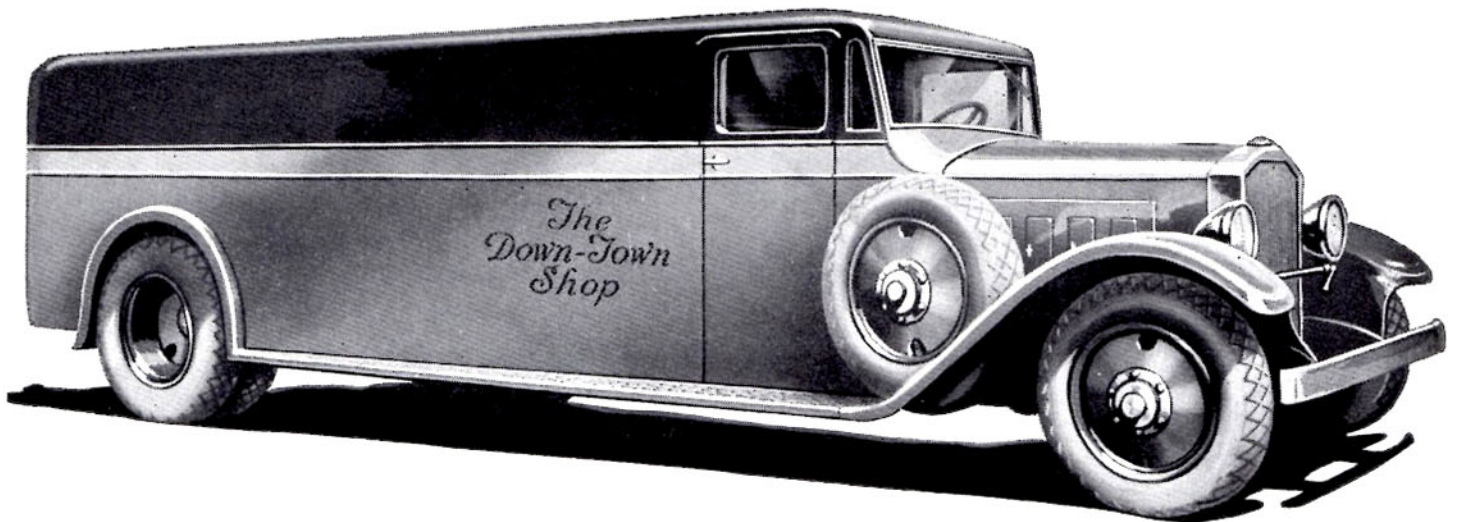


# PIERCE-ARROW

builds a new *8 cylinder*  
**SPEED TRUCK**



**A** NEW 8-cylinder chassis by Pierce-Arrow meets the economies to be derived from high-speed highway operation for cargo work in the medium duty field. It is rated at 13,000 pounds, maximum gross weight.

This new model, with Pierce-Arrow built engine, is the fastest and most powerful unit in the industry of equivalent gross weight capacity. The Eight-cylinder motor produces 125 horsepower at 2800 R.P.M. and a torque of better than 270 foot pounds in the entire range from 1000 to 1900 R.P.M. This conservative, governed engine speed insures a long, economical life.

Surpassing beauty of line and contour conforms admirably with the present day desire for a pleasing

appearance that will enhance the advertising value of a medium duty truck in highway operation.

This unit is all-truck throughout. It has a strong heat-treated frame, heavy duty, 4-speed transmission, full-floating rear axle, and vacuum brake booster. Radius rods and helper springs are standard equipment.

Pierce-Arrow, by its system of unit interchangeability, also offers a choice of 23 other chassis ranging from 12,000 to 44,000 lbs. maximum gross weight. Tractors from 24,000 to 75,000 lbs. maximum gross train weight. Six-cylinder dual ignition power plants range from 70 to 150 H.P. Thus operators can now secure trucks which exactly meet their individual haulage needs.

**PIERCE-ARROW**

*Buffalo, New York*