

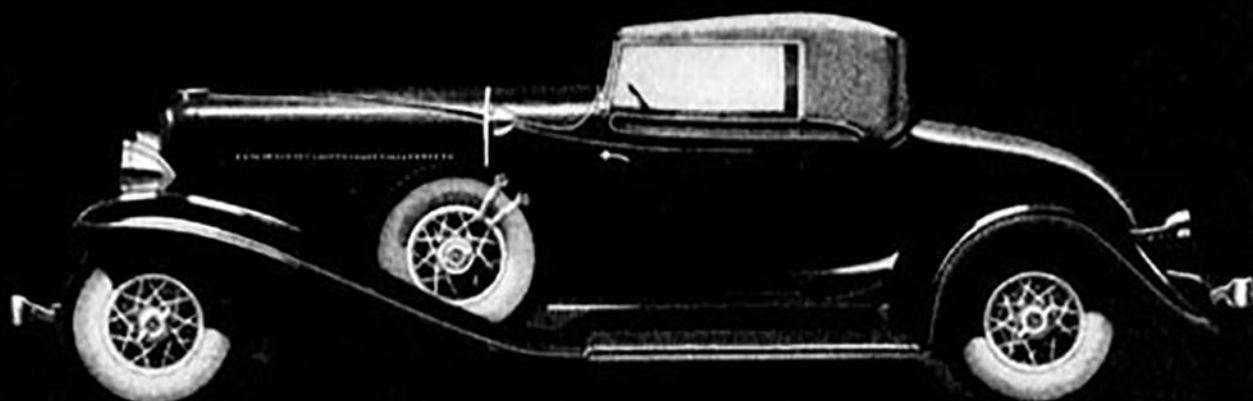
How Do You Judge Value?

By the quickness with which a car leaves others from the stop light? By the smoothness and steadiness with which it holds the road at high speeds? By its ease of steering? By its roominess and comfort? By its rigidity and strength? By its luxurious appointments? By a car's ability to give years of trouble-free service? Judge the new Auburn Straight Eight by ALL of them, and let the car itself

PROVE its superiority in all of them. Then compare the Value you get for the price you pay; 100 Horse Power Lycoming Engine; 127-inch wheelbase; automatic chassis lubrication; twist-proof X-type rigid frame; fully insulated bodies, together with many other of the finest features and most advanced betterments in modern motor cars. An Auburn Straight Eight Standard Model for only—

\$845

Custom Models include Startix, Ride Control; also Dual-Ratio that gives your car "dual-personality."



THE CABRIOLET WITH RUMBLE SEAT
A completely closed or open car as desired. Custom Model.

AUBURN

POWERED BY LYCOMING

Standard Models 8-100: Business Coupe \$845; 5-passenger 2-door Brougham \$895; 4-door Full Sedan \$945; Convertible Cabriolet \$995; Convertible Phaeton Sedan \$1095; Speedster \$1095; 7-passenger Sedan \$1145. Custom Models 8-100A: Business Coupe \$1045; 5-passenger 2-door Brougham \$1095; 4-door Full Sedan \$1145; Convertible Cabriolet \$1195; Convertible Phaeton Sedan \$1295; Speedster \$1295; 7-passenger Sedan \$1345. Prices f. o. b. Connersville, Indiana. Standard Models 12-160: Business Coupe \$1345; 5-passenger 2-door Brougham \$1395; 4-door Full Sedan \$1445; Convertible Cabriolet \$1495; Convertible Phaeton Sedan \$1595; Speedster \$1595. Custom Models 12-160A: Business Coupe \$1545; 5-passenger 2-door Brougham \$1595; 4-door Full Sedan \$1645; Convertible Cabriolet \$1695; Convertible Phaeton Sedan \$1795; Speedster \$1795. Prices f. o. b. Auburn, Indiana. Equipment other than standard, and wire wheels, all models, at extra cost. AUBURN AUTOMOBILE COMPANY, Auburn, Indiana. Division of Cord Corporation. All prices subject to change without notice.