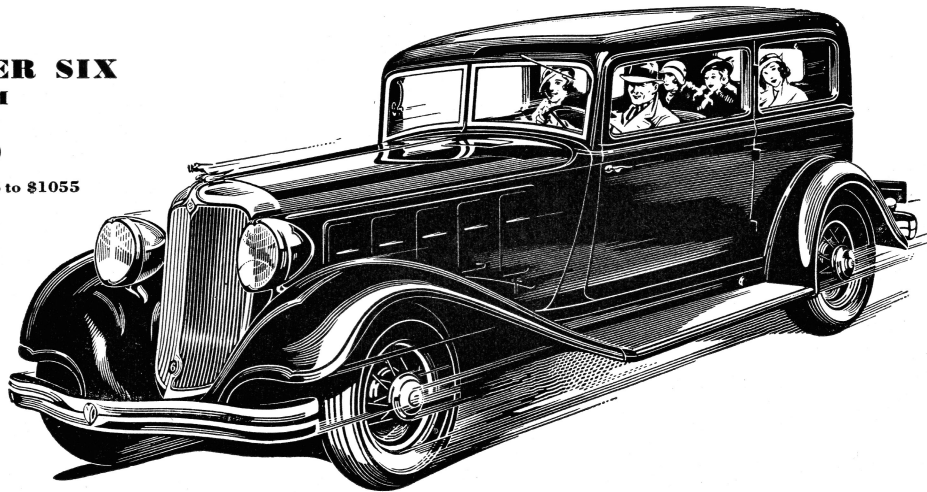


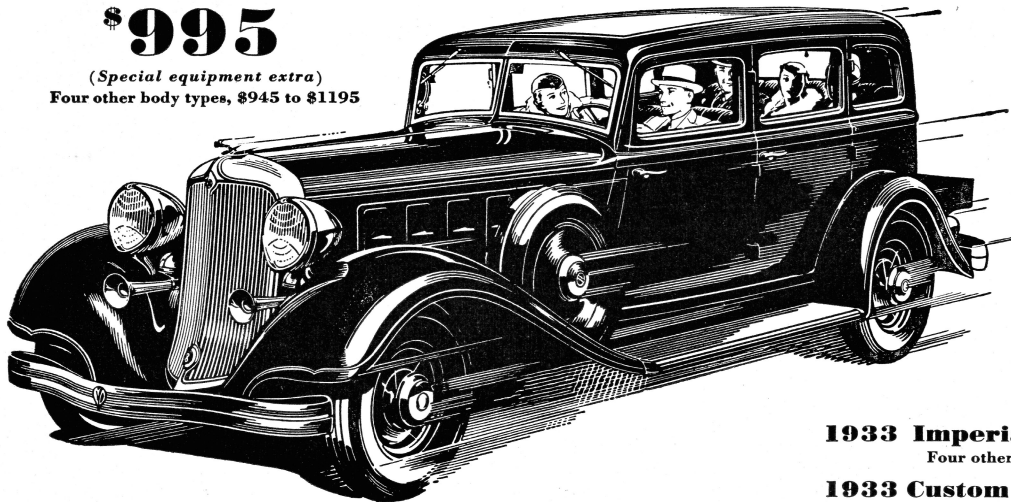
★  
**1933 CHRYSLER SIX  
 BROUGHAM**  
**\$795**

Five other body types, \$795 to \$1055



★  
**1933 ROYAL EIGHT  
 SEDAN**  
**\$995**

(Special equipment extra)  
 Four other body types, \$945 to \$1195



★  
**1933 Imperial Eight Sedan, \$1395**  
 Four other body types, \$1355 to \$1595

**1933 Custom Imperial Sedan, \$2895**  
 Five other body types, \$2895 to \$3595  
 ALL PRICES F. O. B. FACTORY

# It's CHRYSLER for VALUE in 1933

**Four great Chryslers covering four great markets . . . .**

**Low-priced Plymouth Six for the widest market . . . .**

**All with patented Floating Power**

**For one overhead, the greatest coverage offered by any franchise . . . . that's why Chrysler dealers are so happy.**

We cordially invite any dealer to write for confidential information about the Chrysler and Plymouth franchise.

**CHRYSLER SALES CORPORATION**  
**DETROIT, MICHIGAN**