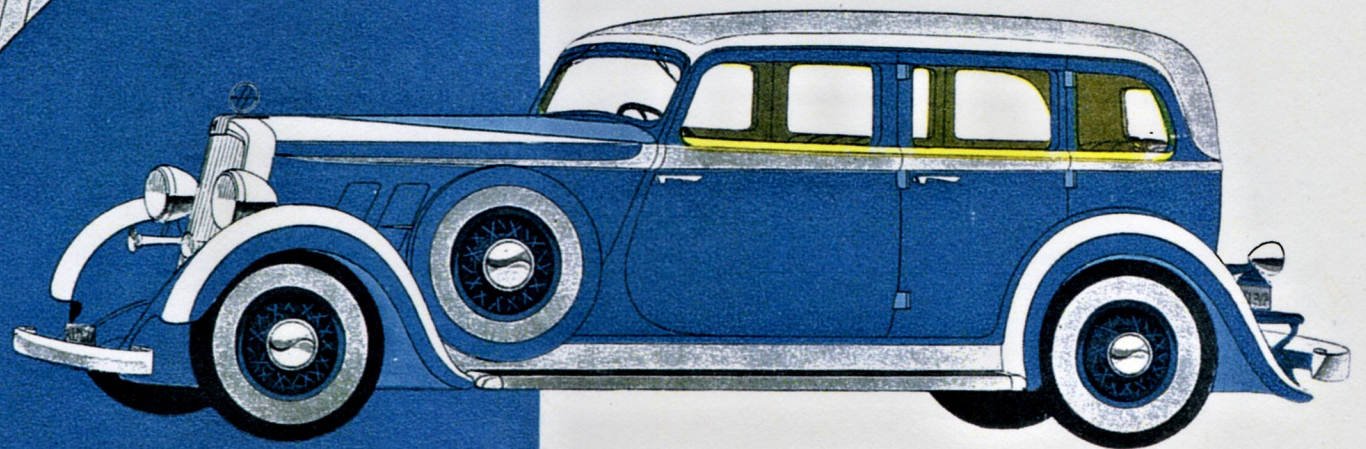


In every model of the 1933 Series you find these latest improvements of engineering and design: Doors of unusual shape and width—for style, for convenience. Automatic thermostatic shock absorbers. Rigid X-frame. Chassis torsional stabilizer. Tubular front axle. Underslung springs. Synchro-silent free-wheeling transmission. Hypoid rear axle. Extreme lowness for safety and riding comfort. Form-fitting fenders and long running board. New full-chromium radiator of aëro-dynamic design. Chromium plated dual horns. Longer hood with fashionable narrow cowl and new door type louvers. Increased horse power and increased speed. Safety glass windshields.

**Three chassis (Series 321, 322, 326)
Four body styles on each**



Five-passenger Sedan (Series 321) . . . \$995 (standard equipped) at factory

THE · SILVER · ANNIVERSARY **HUPMOBILE**

SEDAN PRICES \$995 TO \$1445, at factory