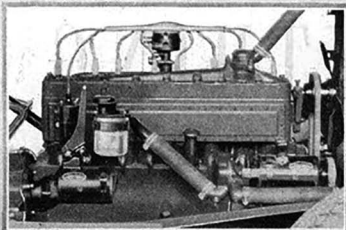
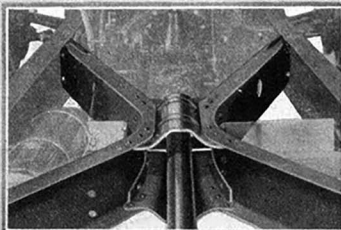


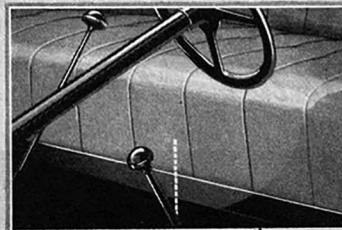
CONSIDER what you GET for what you PAY!



100 HORSE POWER
Lycoming Straight Eight

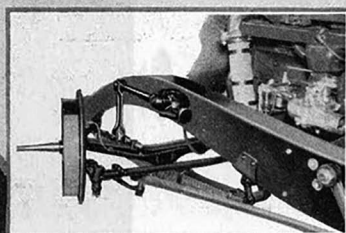


X-TYPE FRAME
Originated by Auburn

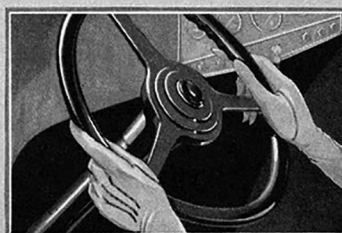


L.G.S. FREE WHEELING
with convenient lock-out lever

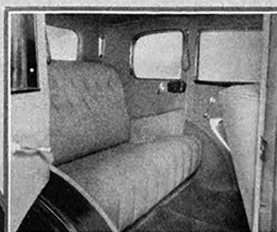
LONG WHEELBASE - 127 INCHES



2-WAY HYDRAULIC SHOCK
ABSORBERS and unusually long
springs for easy riding



ROLLER-BEARING CAM AND
LEVER STEERING — Automatic
Chassis Lubrication

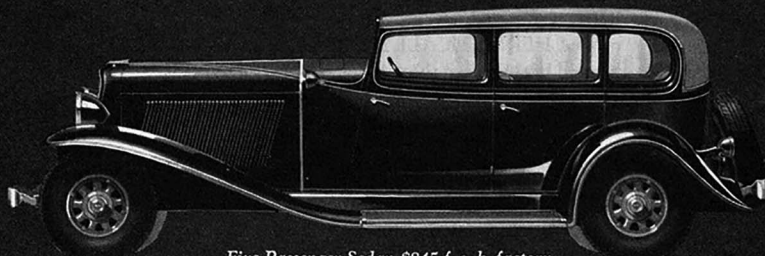


COMFORT AND
ROOMINESS to an
exceptional degree
throughout the
entire car

*Why pay little
and only get little?*

*Auburn gives you
MUCH for LITTLE!*

AUBURN \$745 and up
f. o. b.
factory



Five Passenger Sedan \$845 f. o. b. factory

**Compare Size, Power, Room, Comfort, Performance and ECONOMY
and prove to yourself that Auburn offers the Greatest Value.**

Standard Eights \$ 745 to \$ 945 ♦ Custom Eights \$ 895 to \$1095 ♦ Salon Eights \$1195 to \$1345
Standard Twelves \$1145 to \$1245 ♦ Custom Twelves \$1295 to \$1495 ♦ Salon Twelves \$1695 to \$1845
AUBURN AUTOMOBILE COMPANY, AUBURN, INDIANA. Division of Cord Corporation. All prices f. o. b. factory