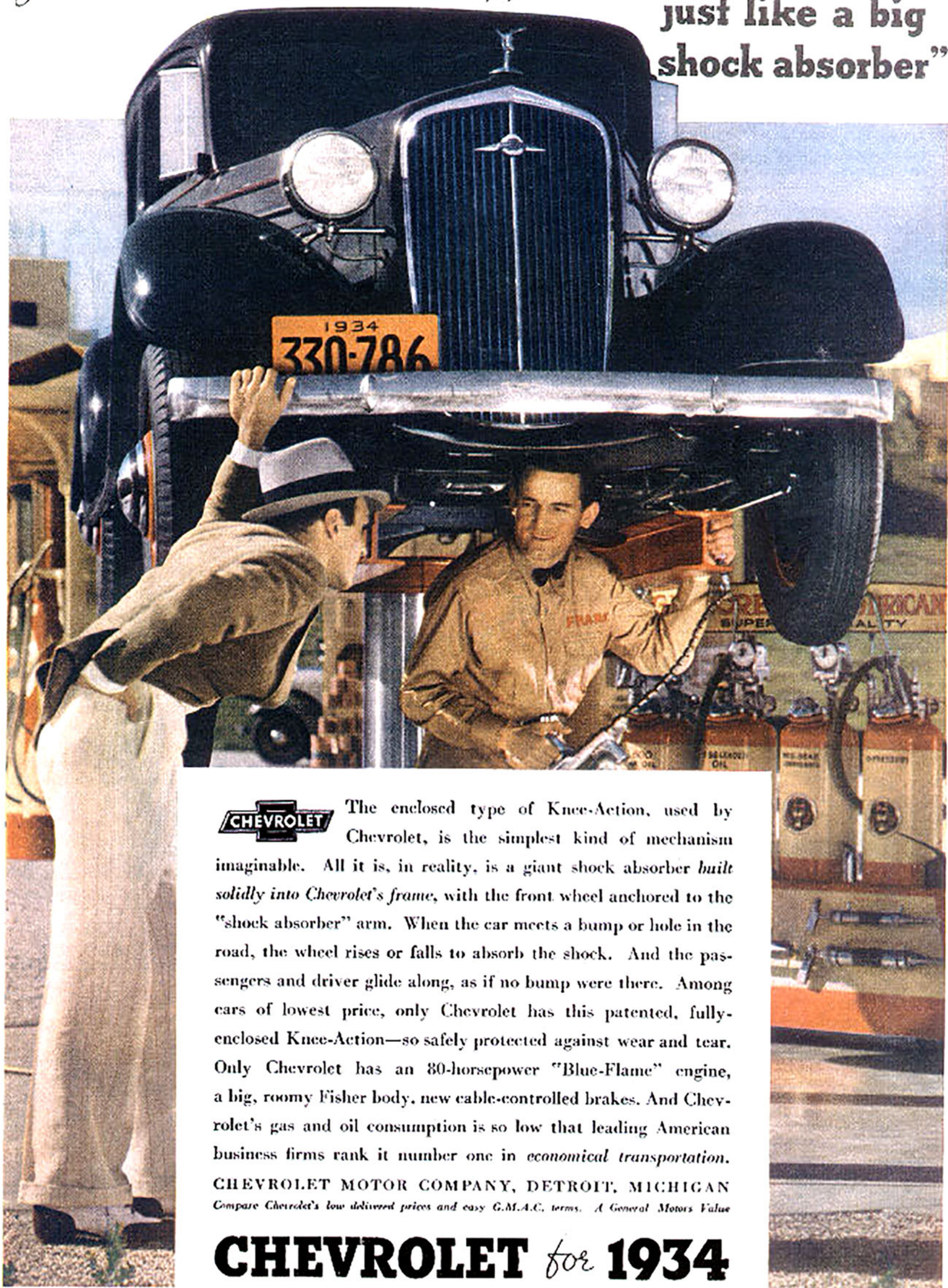


“Look how simple and rugged this Knee Action is—
just like a big shock absorber”



The enclosed type of Knee-Action, used by Chevrolet, is the simplest kind of mechanism imaginable. All it is, in reality, is a giant shock absorber *built solidly into Chevrolet's frame*, with the front wheel anchored to the "shock absorber" arm. When the car meets a bump or hole in the road, the wheel rises or falls to absorb the shock. And the passengers and driver glide along, as if no bump were there. Among cars of lowest price, only Chevrolet has this patented, fully-enclosed Knee-Action—so safely protected against wear and tear. Only Chevrolet has an 80-horsepower "Blue-Flame" engine, a big, roomy Fisher body, new cable-controlled brakes. And Chevrolet's gas and oil consumption is so low that leading American business firms rank it number one in *economical transportation*.
CHEVROLET MOTOR COMPANY, DETROIT, MICHIGAN
Compare Chevrolet's low delivered prices and easy G.M.A.C. terms. A General Motors Value

CHEVROLET *for* **1934**

DRIVE IT ONLY 5 MILES *and you'll never be satisfied with any other low-priced car*