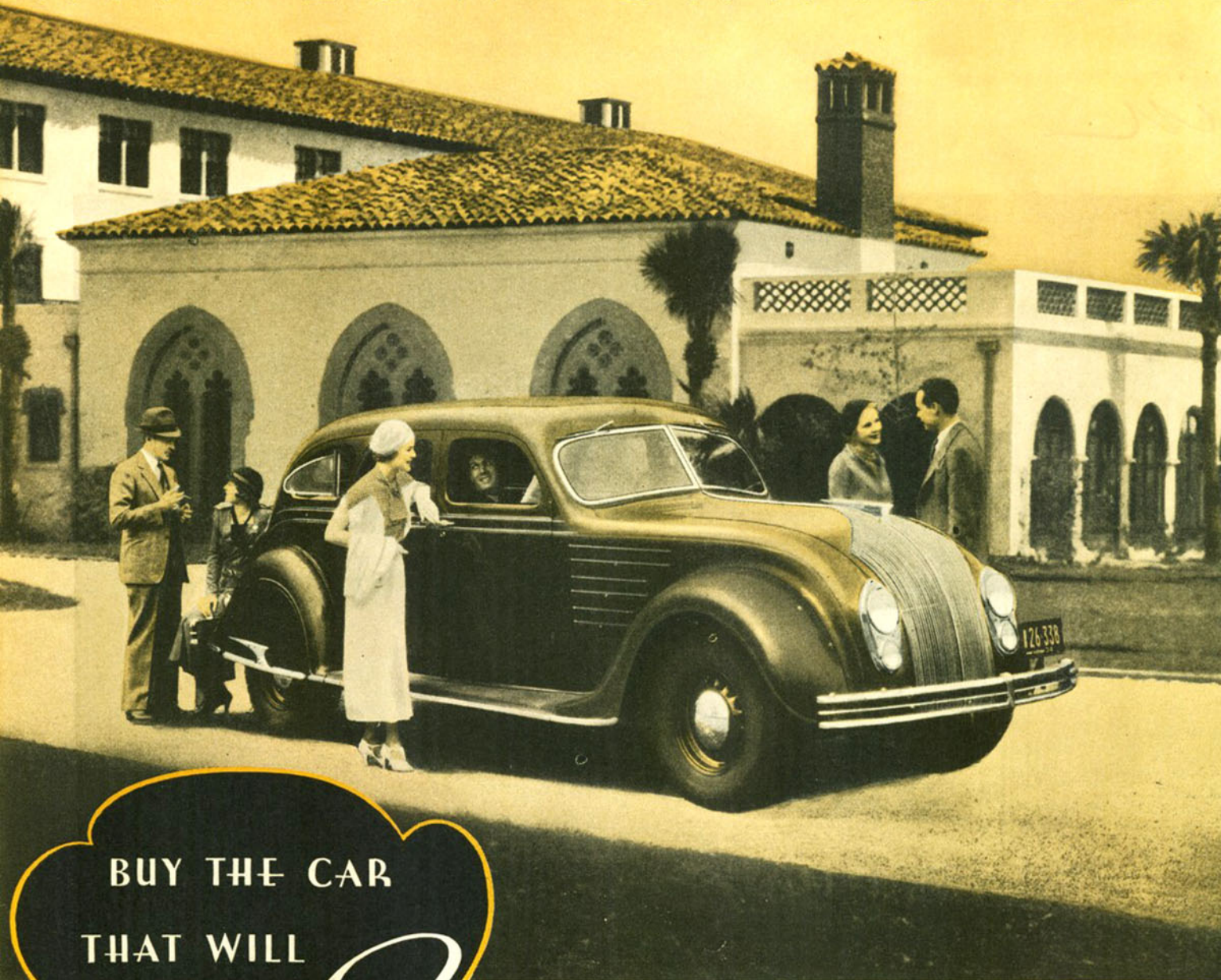


AIRFLOW CHRYSLER



BUY THE CAR
THAT WILL

Stay Modern for Years!



BALANCED LIKE AN ARROW IN FLIGHT

* * * * *

THERE is the spirit of tomorrow in every line of the Airflow* Chrysler . . . a forecast of the future in every mile of its Floating Ride.

The new Airflow Chrysler seems actually to ignore the road it runs on. Its marvelous Floating Ride is the result of entirely new principles of dynamic balance . . . the engine is over the front axle . . . passengers ride in the middle of the car, exactly at the center of balance.

The Airflow Chrysler has a frame built as a unit with the all-steel body which absorbs and distributes road shock, and surrounds you with a bulwark of armor plate. It has seats like divans . . . new legroom and headroom . . . an inside dustproof luggage compartment.

It has a perfected ventilation system which functions without wind roar . . . effortless speeds up to 90 and 95 miles an hour . . . and a pleasing new steering position.

The Airflow Chryslers bring you today the inevitable motor car of tomorrow . . . ushering in a new era of effortless speed, greater efficiency, more

comfortable riding, and refreshing beauty.

You must see them and ride in them to get the whole exciting story.

Four Distinguished 1934 Models

CHRYSLER AIRFLOW EIGHT . . . 122 horsepower and 123-inch wheelbase. Six-passenger Sedan, Brougham and Town Sedan, five-passenger Coupe. All body types, \$1245.

CHRYSLER AIRFLOW IMPERIAL . . . 130 horsepower . . . 128-inch wheelbase. Six-passenger Sedan and Town Sedan, five-passenger Coupe. All body types, \$1495.

AIRFLOW CUSTOM IMPERIAL . . . 150 horsepower . . . 146-inch wheelbase. Magnificently-styled, individualized body types, prices on request.

1934 CHRYSLER SIX . . . *With independently sprung front wheels* . . . for a levelized, cushioned ride . . . 93 horsepower, 7 body types on 117-inch and 121-inch wheelbase. Priced from \$725 up, 4-door Sedan, \$795. All Prices F. O. B. Factory, Detroit.

FLOATING RIDE BOOKLET FREE—Write for the interesting booklet which describes the romantic development of Floating Ride. Address the Chrysler Sales Corporation, 12204 East Jefferson Avenue, Detroit, Mich.

*NAME COPYRIGHTED 1933—CHRYSLER CORPORATION