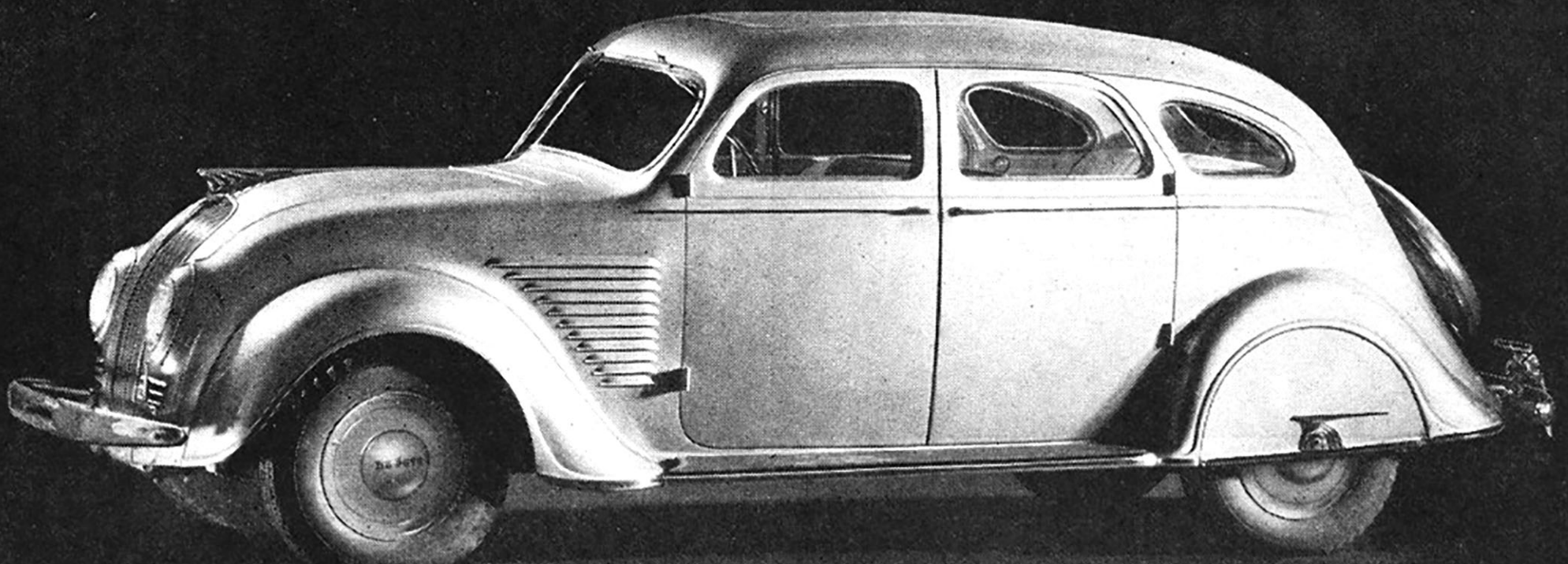


# Here's the NEW\* AIRFLOW DESOTO!

\*© 1933 BY CHRYSLER CORPORATION



1 IT BORES A HOLE THROUGH THE AIR  
2 IT CRUISES AT 80 MILES AN HOUR

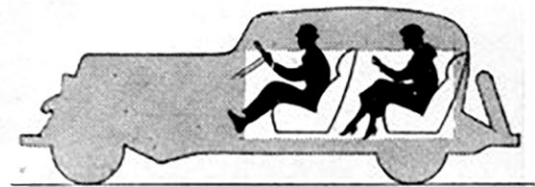
3 FLOATING POWER PLUS FLOATING RIDE  
4 BRIDGE-TYPE STEEL GIRDER-TRUSS BODY

## NEW FEATURES

Automatic Ventilation for all passengers in all weather; Enclosed Luggage Compartment; Girder-Truss All-Steel Sound-Insulated Body; Airwheels; Wide-Angle Vision; Longer Springs; 100 Horsepower Aluminum Head Engine; Floating Power Engine Mountings; Automatic Clutch; Free Wheeling; Hydraulic Brakes; All-Silent Transmission; Flexbeam Lighting; Starting Button on dash.

### 4 AIRFLOW DeSoto Models

The 4-Door 6 Passenger Sedan  
The 4-Door 6 Passenger Town Sedan  
The 2-Door 6 Passenger Brougham  
The 2-Door 5 Passenger Coupe



Here's how you ride in a conventional car . . . and pity the passengers who ride over that rear axle.



And here's how everybody rides luxuriously "amidships" in the new AIRFLOW De Soto. No more "straphanging" from now on!



Three's no crowd in De Soto's front seat. It's just as wide as the back. It holds three as easily as a conventional front seat holds two.



Did you ever see an automobile with so much room in it? Easily accessible behind the back cushion is a large luggage compartment.