

# The Car of a Million "OK's"

**M**ore than a million people have okayed Nash cars by planking down their money and becoming enthusiastic owners of Nash cars.

A motor car success exceeding a million cars is too great to happen by chance. There must be good reasons for it. All this good faith in a car could not exist, much less keep spreading and growing, unless Nash year after year thoroughly justified people's faith.

The 1934 Nash is what it is today because it benefits by all the cumulative experience

and skill developed in the building of a million cars preceding it.

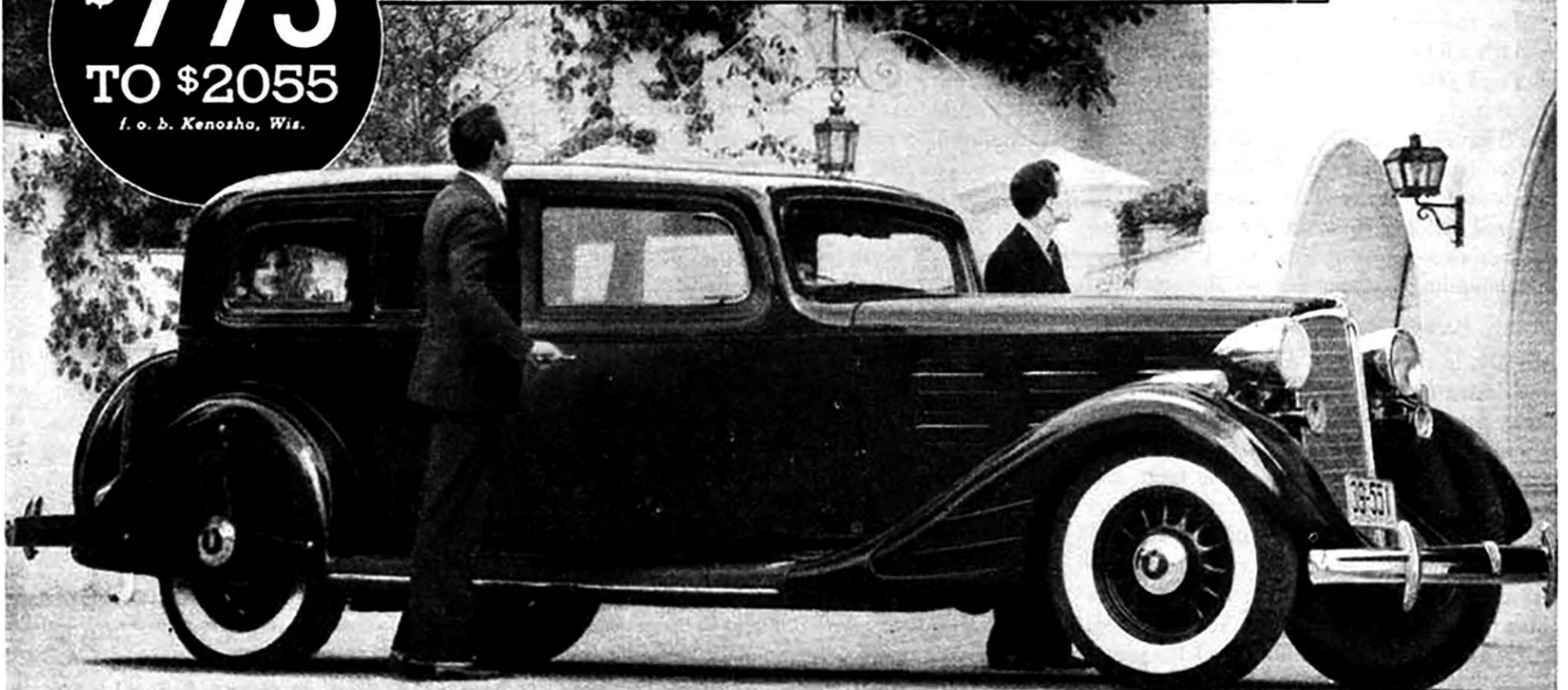
It's the smartest, richest, finest Nash ever built. A new high in motor car *enjoyability*. Every model Twin-Ignition-powered for the last word in performance. Individual front wheel suspension without sacrificing the front axle. Clear-vision ventilation. Bendix equal-action brakes. The most convincing car on the road you ever drove!

Drive a 1934 Nash and discover for yourself why one Nash sells another Nash!

*Individually-Sprung Front Wheels Optional*

**\$775  
TO \$2055**

*f. o. b. Kenosha, Wis.*



## 1934 TWIN IGNITION VALVE-IN-HEAD NASH

**BIG SIX, 116" W. B., 88 H. P. . . . . \$775 to \$865**    **AMBASSADOR EIGHT, 133" W. B., 125 H. P. \$1575 to \$1625**  
**ADVANCED EIGHT, 121" W. B., 100 H. P. . \$1065 to \$1145**    **AMBASSADOR EIGHT, 142" W. B., 125 H. P. \$1820 to \$2055**

NEW NASH-BUILT LAFAYETTE, THE FINE CAR OF THE LOWEST PRICE FIELD, \$595 TO \$695

*(All Prices f. o. b. factory subject to change without notice. Special Equipment Extra)*