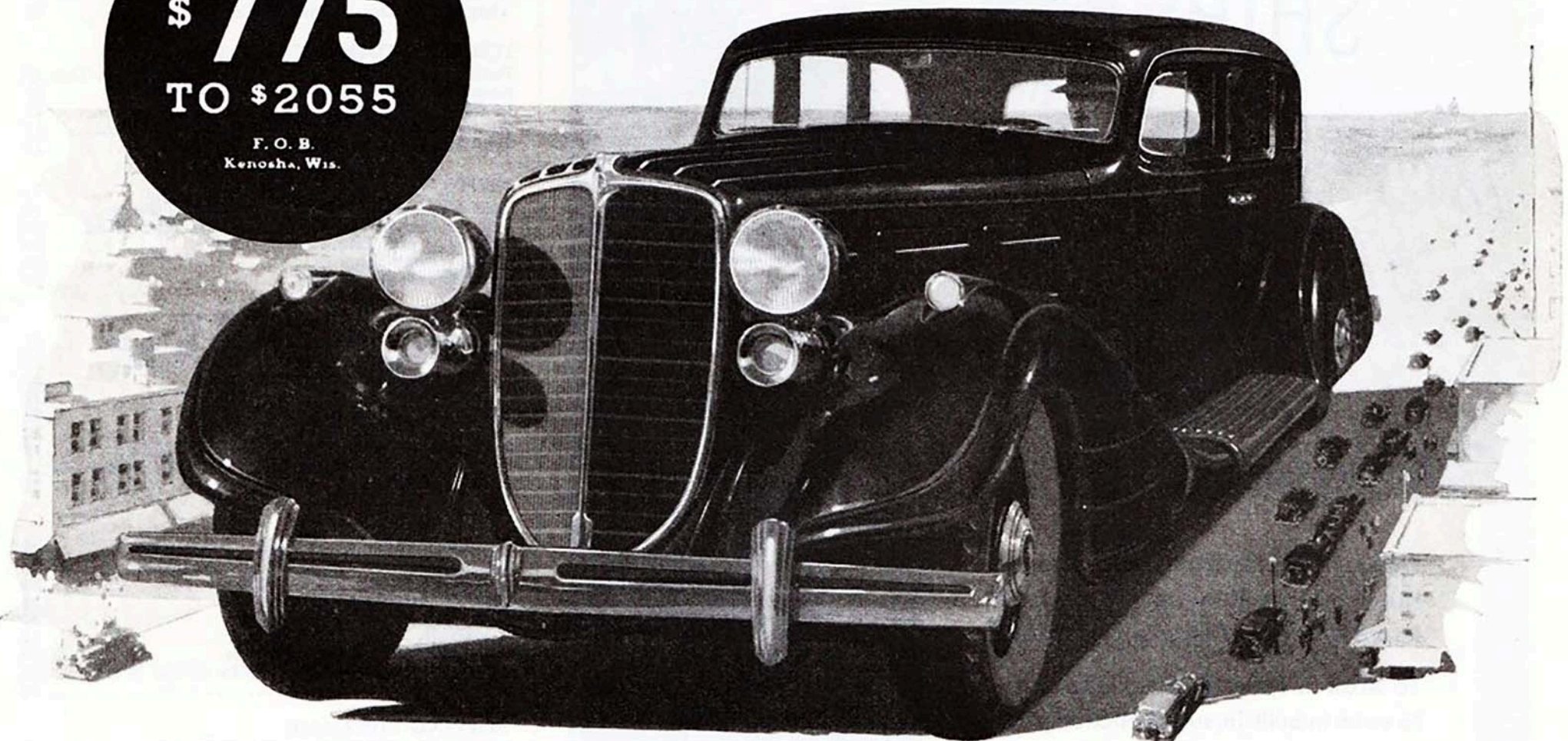


On to the 2ND MILLION CARS

\$ 775
TO \$2055
F. O. B.
Kenosha, Wis.



NASH DEALERS ARE GIVING A MILLION DEMONSTRATIONS IN 30 DAYS!

★ ★ Nash has built a million Nash cars . . . and already has started, with accelerated pace, toward its 2nd million!

A million-car success calls for a celebration. And so, Nash dealers have programmed themselves to give, within 30 days, *a million people a million demonstrations!*

. . . A million "Show me" rides in the 1934 Nash and its companion car, the new "jeweled movement" La Fayette, fine car of the lowest price field.

. . . A million revelations of skilled engineering,

honest quality and careful, thorough workmanship.

. . . A million revealing, thrilling, convincing experiences for a million people who think enough of their money to want to make comparisons.

. . . A million proofs that the Nash dollar and the LaFayette dollar are the *BIG* dollars in today's automobile market.

You are invited, urged—yes, *challenged*—to drive one of these cars and form your judgment on first-hand knowledge. Your Nash dealer is eager to have you discover the many reasons why Nash is a million-car success.

Individually-Sprung Front Wheels Optional on All Models

1934 TWIN IGNITION VALVE-IN-HEAD NASH

BIG SIX
116-inch Wheelbase 88 Horsepower \$775 to \$865

ADVANCED EIGHT
121-inch Wheelbase 100 Horsepower \$1065 to \$1145

AMBASSADOR EIGHT
133-inch Wheelbase 125 Horsepower \$1575 to \$1625

AMBASSADOR EIGHT
142-inch Wheelbase 125 Horsepower \$1820 to \$2055

←————— New Nash-Built LaFayette, the Fine Car of the Lowest Price Field, \$595 to \$695 —————→

(All prices f. o. b. factory, subject to change without notice — Special Equipment Extra)