

An Interview with the President of **AUBURN**

No other automobile manufacturer has the wide, diversified experience to benefit from, that Auburn has.

~ ~ ~

THINK of the experience of designing and building tens of thousands of engines for a wide range of different uses; for airplanes, for trucks, for speed boats, and for industrial purposes as well as for passenger cars.

Then, there is the experience in building axles for taxicabs, trucks, and passenger cars.

Also, the experience in building custom type Duesenberg cars, capable of 140 miles per hour speed, and retailing for as much as \$20,000.00.

Our associates build many kinds of airplanes, open ones for military service, cabin planes for private owners, and several types of Airliners for transport airlines, including the world's fastest transport plane—226 miles per hour.

It is from this kind of definite knowledge—and not from an "artist's dream"—that Auburn gets its exclusive information on how best to streamline a motor car.

The point is—Auburn is qualified to build ANY kind, shape, style, or type of motor car. Auburn engineers do not wear blinders. Auburn's experience is not limited.

Auburn uses ALL of this experience to build cars the way we know they SHOULD BE built.

Such a car, we know:

—should be easy to handle, "light and quick on its feet,"—economical to operate, but not cramped and too small for the comfort of large people.

—should be correctly streamlined—but not a "freak" in appearance.

—should be built low, with a low center of gravity.

—should have, not merely "just enough power," but a superabundance of power with a *reserve* that protects and prolongs the life of the engine.

—should have a body that is not only ventilated, not only sound-proofed, not only spacious in its accommodations, but also so strongly built that it will stand up and endure as long as the chassis.

—should have a choice of gear ratios. Dual-Ratios solves this problem in our Eight.

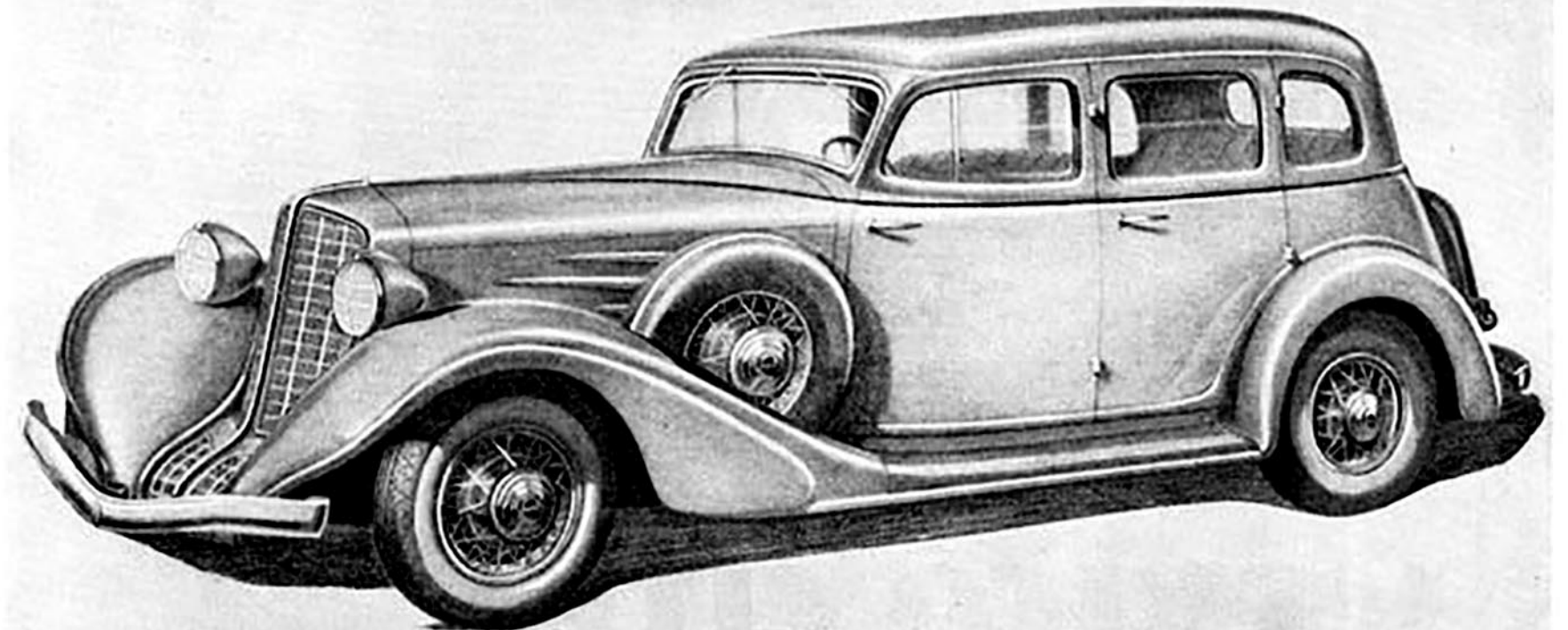
—should not include a single "experimental" or untried feature. Every part of the car should be thoroughly tested and absolutely proven in every respect for efficiency and durability.

In short—we set out with the definite determination to build a car that could challenge the entire industry on any basis of comparison . . . *a car that would give the buyer more of everything for less money than he could get anywhere else.*

We invite you to arrange with your local Auburn dealer—or write to us for prices, specifications and an opportunity to drive these new Auburn Six and Eight cylinder models.

W. H. BEAL

AUBURN AUTOMOBILE COMPANY, Auburn, Indiana. *Division of Cord Corporation*



The NEW AUBURN

6 and 8 cylinder *Models*