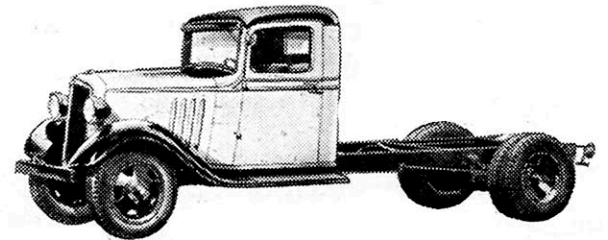




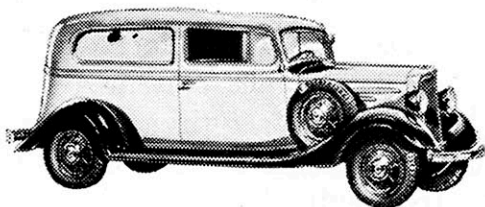
Truck owners
know economy
**THAT'S WHY THEY
BUY CHEVROLET
TRUCKS**



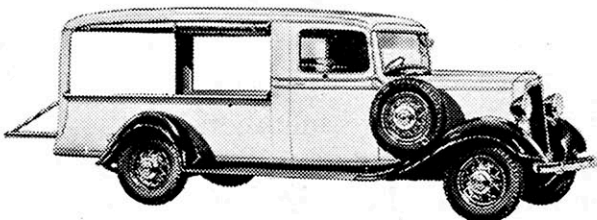
*1 1/2-Ton Stake, \$660
(131" Wheelbase)



*1 1/2-Ton Chassis and Cab, \$605
(157" Wheelbase)



Sedan Delivery, \$515
(107" Wheelbase)



Half-Ton Canopy Express, \$555
(112" Wheelbase)



Men who study haulage costs know that Chevrolet trucks are as outstanding in economy and durability as they are in price. Chevrolet trucks handle tough hauling jobs day after day at small operating cost, because they are built to Chevrolet's own high standards of quality in every part. The powerful six-cylinder valve-in-head engines are

truck motors, especially designed to give sustained pulling power and to keep on working under the hard punishment of road and load. Features that assure stamina and long life are evident in every detail of the precision-engineered chassis. Chevrolet trucks are the *world's lowest priced* trucks—because Chevrolet is the *world's largest builder* of trucks.

CHEVROLET MOTOR COMPANY, DETROIT, MICHIGAN

Compare Chevrolet's low delivered prices and easy G.M.A.C. terms. A General Motors Value

*Above are list prices of commercial cars at Flint, Michigan. Special equipment extra. *Dual wheels and tires \$20 extra. Prices subject to change without notice.*

CHEVROLET TRUCKS

World's Lowest Prices