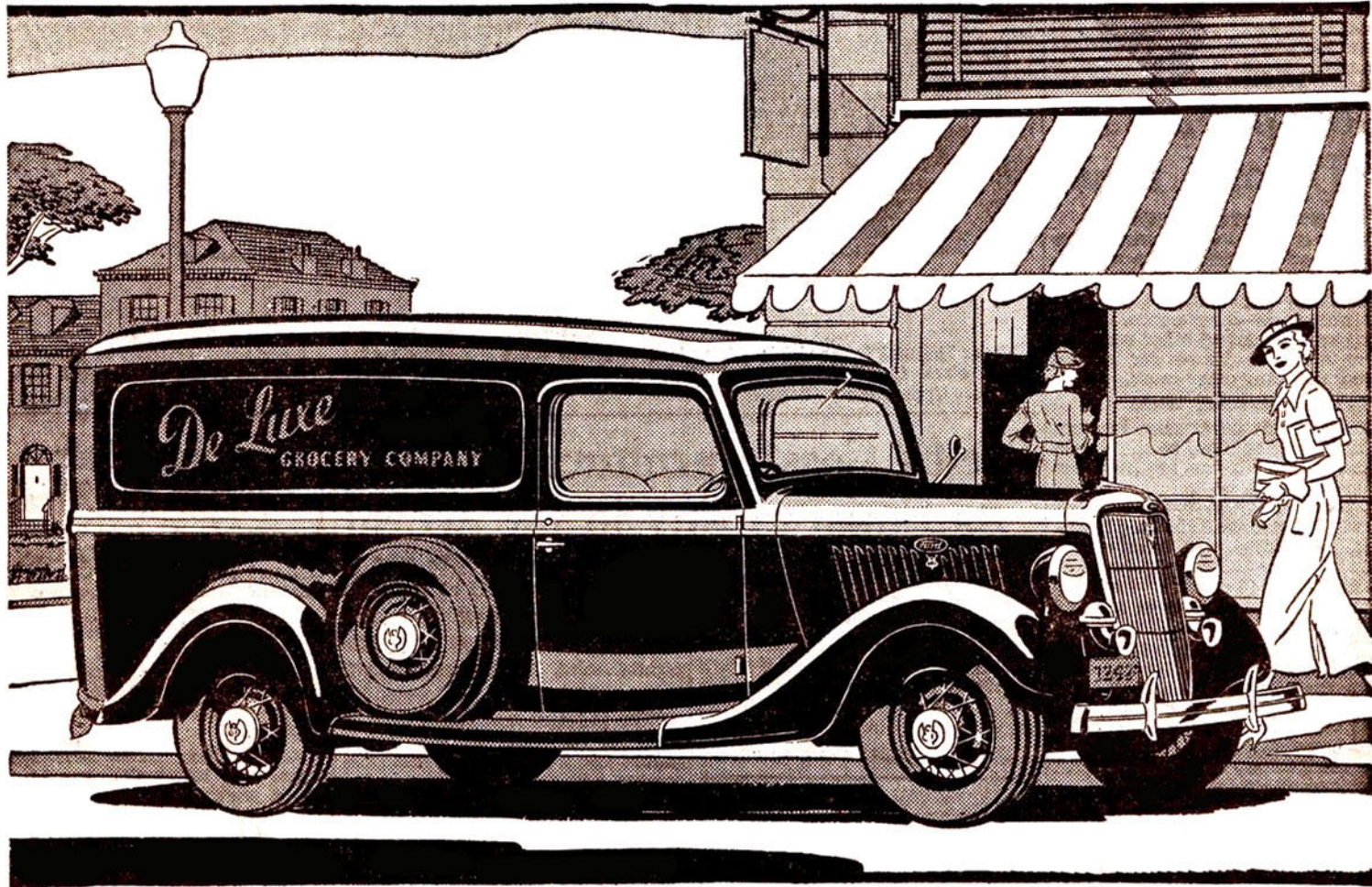


Style that builds PRESTIGE



BRILLIANT V-8 PERFORMANCE

THESE dual-purpose delivery cars are designed to exactly fit your business... And the advanced features of the Ford V-8 give essential speed with safety in traffic—combined with unusual economy.

These cars because of their baked enamel finish retain their showroom appearance indefinitely. Constantly on the streets, they creditably represent the most exclusive shops—advertising of definite value.

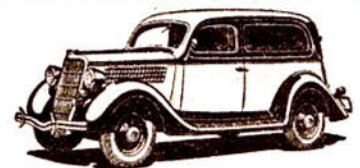
The 85 h.p. V-8 engine is the most dependable yet economical ever built by Ford. The lengthened springbase

—123 $\frac{7}{8}$ inches—gives more room for driver and load—greater riding comfort. The Ford torque-tube drive and radius rods—improved self-centering brakes—centri-force clutch and larger tires (6.00 x 16) all emphasize the extra value these cars alone possess.

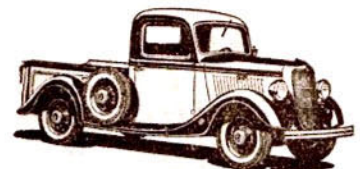
Here is everything the most critical owner can ask for. Yet the prices are notably low. And so is the upkeep.



Easy terms through
Universal Credit Co.
—the Authorized
Ford Finance Plan



The New Sedan Delivery—has the same smart lines as the 1935 Ford V-8 passenger car. Loading space measures 65" long at the floor—46 $\frac{3}{4}$ " wide and 44" high.



The Ford V-8 Pick Up—This unit finds a place in almost every business from farming to manufacturing. Loading space measures 69" in length—46" in width and 14" high. The body is of welded steel construction.

A U T H O R I Z E D F O R D D E A L E R S

FORD V-8 COMMERCIAL CARS