



DISTINCTION *at low cost*

Ever since the Graham became known as the most imitated car on the road, there has been a wide-spread public demand for a Graham in the lowest price range—a car that would bear out the Graham tradition of style leadership and superior performance and yet sell at a figure within easy reach of *all*.

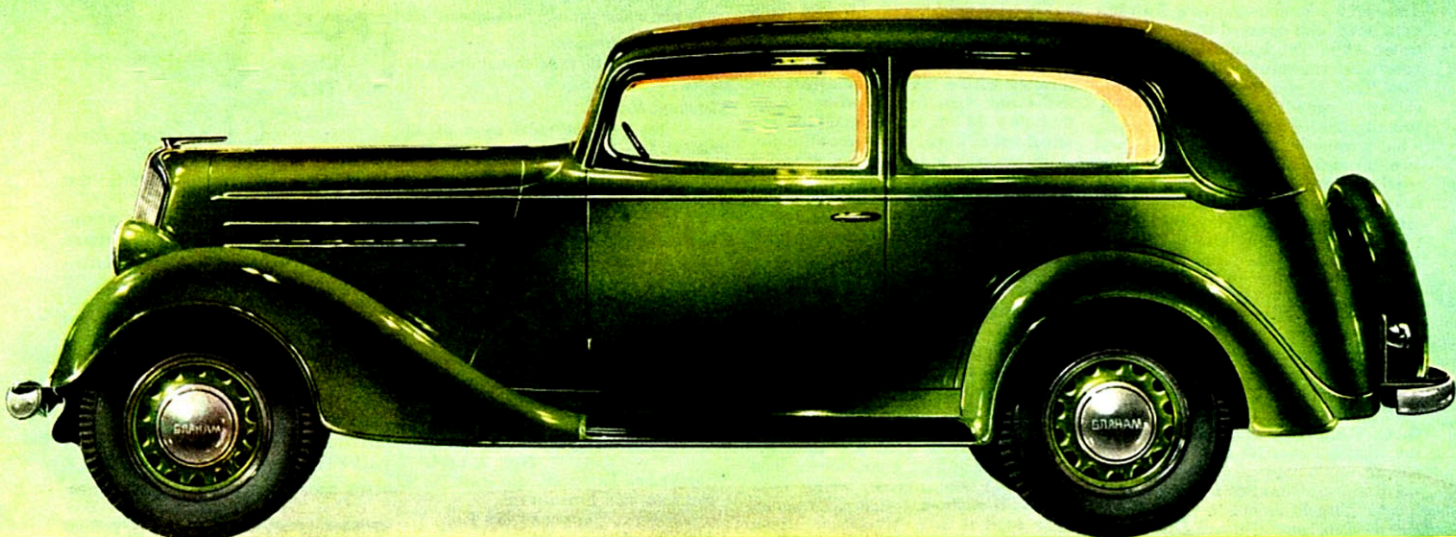
This brilliant new Six is Graham's answer to that demand. It is distinctly an achievement in design, truly a Graham in quality, typically a Graham in performance.

Not only have the builders made it easy to *own* a Graham by offering it at such a low price, but have made it easy to *maintain* the car by designing it to operate at minimum cost.

• • •

See the new Graham Six at your automobile show or in your Graham dealers' showroom. Also inspect the beautiful new 1935 Graham Special Six, Graham Eight and Supercharged Eight now on display.

GRAHAM-PAIGE MOTORS CORPORATION • DETROIT, MICHIGAN



A NEW **GRAHAM** SIX IN THE LOWEST PRICE RANGE