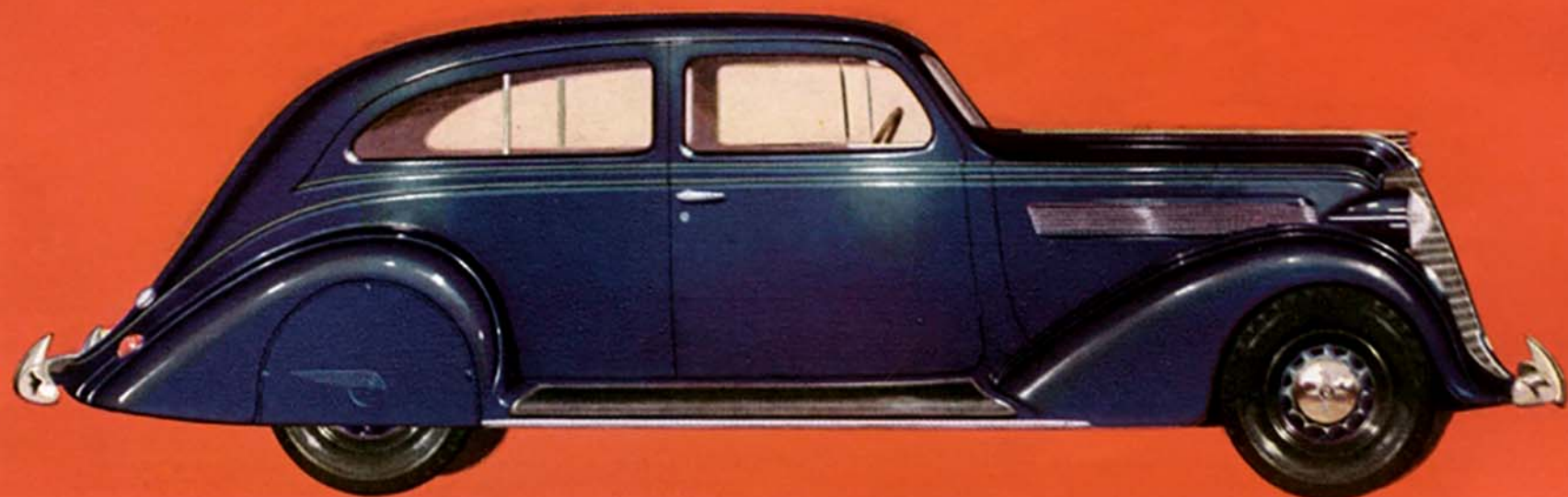
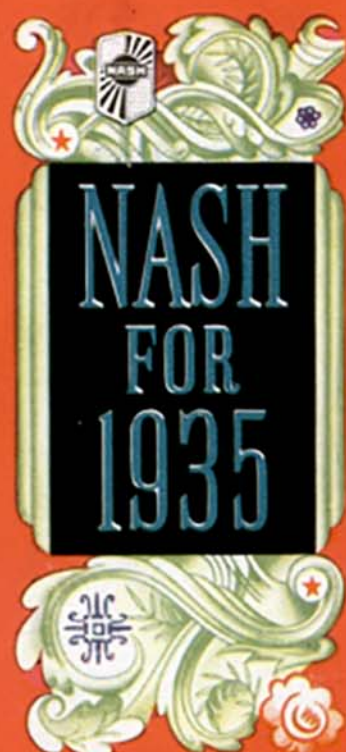


# SOMETHING NEW IN \*R.P.S.



EVERY MODEL A 6-PASSENGER MODEL—\$895 AND UP *f. o. b. factory*

\***R.P.S.** means Ride, Performance, Style—and Nash for 1935 brings you something altogether new... different... finer... in all three.

Here at last is a car with a levelized ride that is really "on the level." Here at last is a car with performance that is not only different, but a whole lot different. Here at last is proof that a car may be completely streamlined and still be beautiful.



No other motor car today offers all the engineering developments and comfort features Nash offers. Just compare the R. P. S. of Nash with the R. P. S. of any car—and you will find Nash the most advantaged car of the year.

**1935 LAFAYETTE** The fine car of the low-price field. A bigger—better built—roomier car. Eight different models priced from \$585 to \$750 *f. o. b. factory*.

Nash Advanced Six—Victoria **\$895**  
120-inch Wheelbase—90 H. P.

Nash Advanced Eight—Victoria **\$1115**  
125-inch Wheelbase—102 H. P.

Nash Ambassador Eight—Victoria **\$1240**  
125-inch Wheelbase—102 H. P.

AEROFORM DESIGN

FLYING POWER  
DEVELOPED FROM TWIX IGNITION

SUPER-HYDRAULIC BRAKES

AUTOMATIC CRUISING GEAR

ALL-STEEL, ONE-PIECE BODIES

SYNCHRONIZED SPRINGING

BALL-BEARING STEERING

MID-SECTION SEATING

BALANCED RIDE