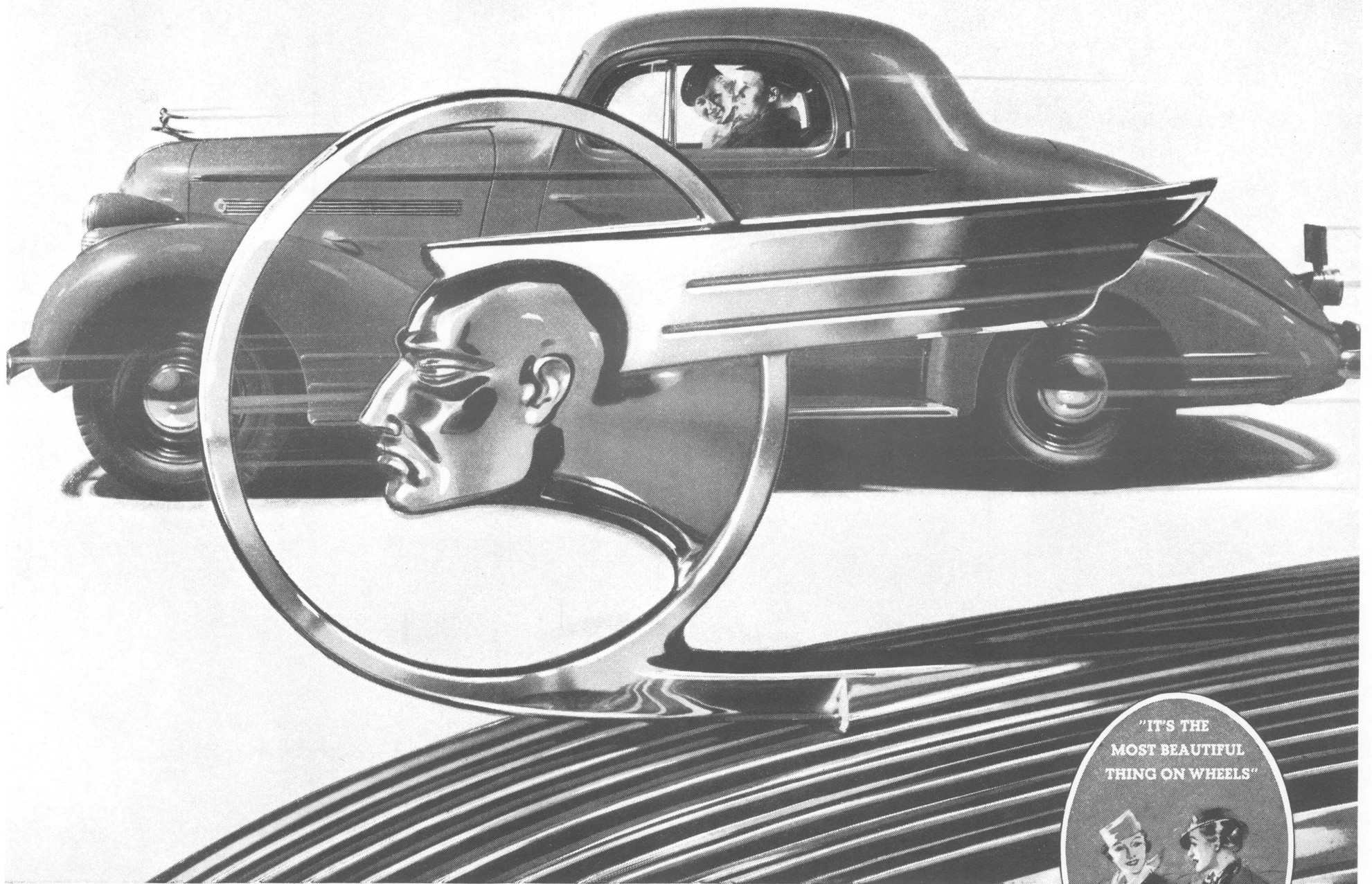


Only the price tag tells you

this is a **Low-priced** car



**ONLY FROM A GREAT MODERN PLANT COULD COME A LOW-PRICED CAR SO FINE**

It used to be that a low-priced car plainly bore the marks of its low cost in everything it had and did. But that was before the new Pontiac Six arrived. Remove the price-tag from this car and you would automatically place it among America's very finest automobiles. *And you would be entirely right!* The car that America instantly named *the most beautiful thing on wheels* fully deserves top ranking all the way around. It is more than safe—it is *super-safe*, thanks to its steel-topped Fisher Bodies, and hydraulic brakes that are triple-sealed against dirt and moisture. It is more than merely comfortable

—insulated interiors, scientific weight distribution, modern springing and other new features add new pleasure to motoring. Few engines have achieved Pontiac's smooth, lively performance, and fewer still its economy. And if you care to look still further for evidences of quality, you will find such features as silver-alloy bearings—twice as durable as the ordinary type. Depend on it—in every way this quality product of a great, modern plant will far exceed your most optimistic expectations. A look, a ride, and you'll decide—*the quality of the car makes the price phenomenal!*

PONTIAC MOTOR COMPANY, PONTIAC, MICHIGAN. *Division of General Motors*

"IT'S THE  
MOST BEAUTIFUL  
THING ON WHEELS"



**Highlights of Pontiac Quality for 1935**

■ ■ ■  
Solid Steel "Turret-Top" Bodies by Fisher ■  
Triple-Sealed Hydraulic Brakes ■ Speedlined  
Styling ■ Completely Sealed Chassis ■  
Silver-Alloy Bearing Engines ■ 10-Second  
Starting at Zero ■ Even Greater Economy ■  
No Draft Ventilation ■ ★Knee-Action ■  
Luggage and Spare Tire Compartment.



**NEW PONTIAC SIXES and EIGHTS \$615**

AND UP. List price of Standard six-cylinder Coupe at Pontiac, Mich. Standard group of accessories extra. Available on easy G. M. A. C. Time Payments. \*On the Eight and De Luxe Six models.