

HERE ARE THE FACTS

..AND HERE ARE THE FIGURES

Name: The NEW PACKARD 120 for 1936—and that means a Packard in all the name implies.

Appearance: The distinguished, enduring lines that have identified all Packards for more than 30 years.

Mechanical excellence: Precision workmanship by Packard that assures longer life than has ever been known in this price class before.

Performance: A motor of 120 horsepower, so mighty it makes light of the steepest hill, so quiet it barely whispers, even at high speed.

Economy: As low or lower operating costs than you'll find on cars in the same or even in the lower price fields.

Comfort: Indescribable and unbelievable—until you ride in this car.

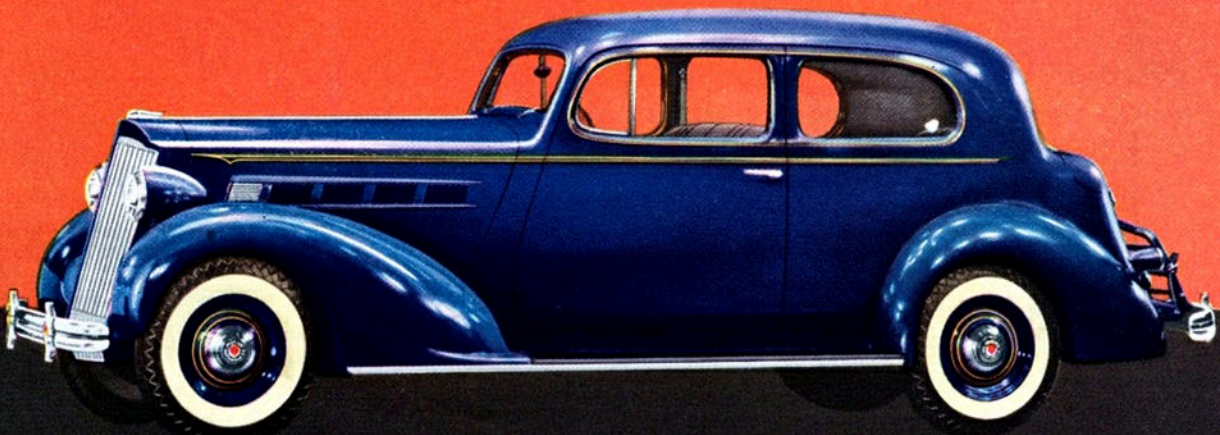
Cost: Within the means of almost everyone who owns a car. If your present car is of average value, it will nearly cover the down payment on a new Packard 120. Because the monthly payments can be arranged to suit your convenience, *they are little, if any, more than you would pay for a lower-priced car.* And the long life and ageless beauty of the Packard 120 make it one car it is sensible to buy out of income. For long after the last payment has been paid, the car will still be a delight to own and drive—it will still have the identifying lines that make Packard America's most distinguished motor car.

ASK THE MAN WHO OWNS ONE

\$ 990 To \$ 1115

AT DETROIT . . STANDARD ACCESSORY GROUP EXTRA

The 1936 Packard 120 Touring Coupe for Five Passengers, One of Seven Attractive Body Styles



THE NEW PACKARD 120 FOR 1936

Hear LAWRENCE TIBBETT, America's favorite baritone, every Tuesday night, 8:30 P. M. Eastern Standard Time—Columbia Broadcasting System, coast-to-coast network.