

# REO PRESENTS *America's Finest Six*

**T**IRED of small-car limitations? Anxious to get into a big car again—to ride smoothly—to revel in luxury? Then Reo has built the car for you—the beautiful, modern new Flying Cloud—by all odds, *America's Finest Six*.

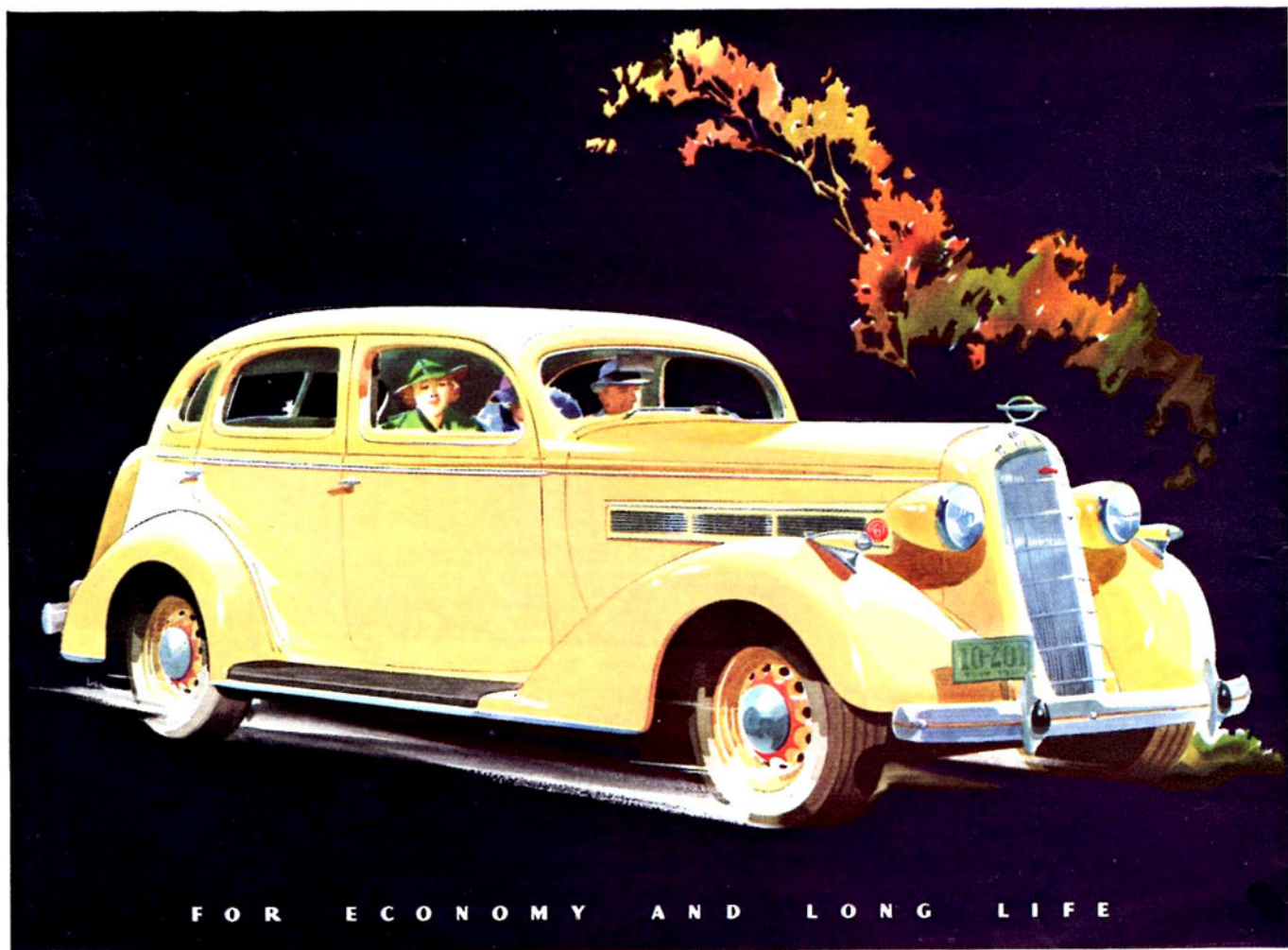
You might think that this is a costly car. But it is not—either to buy or to own. Yet Reo has given *America's Finest Six* every characteristic of fine cars. There is weight—for without weight there can be neither complete comfort nor reassuring safety. There is size. And there is a smooth and powerful motor to be the perfect servant of your will . . . silent, prompt, effortless.

Inside the Flying Cloud there's comfort—a cradled ride; deep,

luxurious upholstery; wide, uncramped seats, with plenty of leg and elbow room; and all the little niceties of appointments and fixtures that warm the luxury-loving heart!

Such a car as this new Reo could not be built in a day, nor could it be built by makers who have grown old in the practice of building to a price. *America's Finest Six* is the culmination of thirty-one years of honest, careful motor-car craftsmanship.

Look at its sleek beauty. Enjoy the deep-piled *comfort* and experience the exhilarating thrill of driving *America's Finest Six*. See how much more Reo gives you for your motoring dollar. There's a dealer near you.



FOR ECONOMY AND LONG LIFE

THE SIX WITH ALL FINE CAR FEATURES—\$795—\$895\*

**Powerful, long-life 90 h. p. engine.** Remarkable gas and oil economy. Seven-bearing crankshaft. Chrome-nickel block. Lo-Ex pistons. Aluminum cylinder head. Engine floats in rubber providing vibration-free operation.

**Double-strength, reinforced, X-braced frame** welded and riveted throughout. Low center of gravity. Long, flexible springs with double-action, airplane-type shock absorbers. All-steel, artillery-type wheels with large tires.

**Super-safety**—All steel bodies. Sealed hydraulic brakes, self-equalizing and positive in action. Feather-touch cam and lever steering. Easy-shift, synchronized transmission with lever well forward and hand brake on left side, providing ample room for three in front seat.



**New cradled-ride.** Six passenger comfort. Luxurious, deep-cushioned seats are placed between the axles. Exceptional leg and head room. Wide door entrances.

**Advanced, all-steel, streamlined bodies.** All-steel top, fully insulated and rumble-proof. Trunk integral with body. Custom upholstery. Safety glass in windshield. Deluxe panel with full vision instruments and large package compartment. Distinctive new treatment of doors and head linings. Beauty and luxury in every detail.

Reo Flying Clouds are available in: Two-door coach, two-door brougham and four-door sedan models.

\*Prices f. o. b. Lansing; subject to change without notice. Special equipment and tax extra.