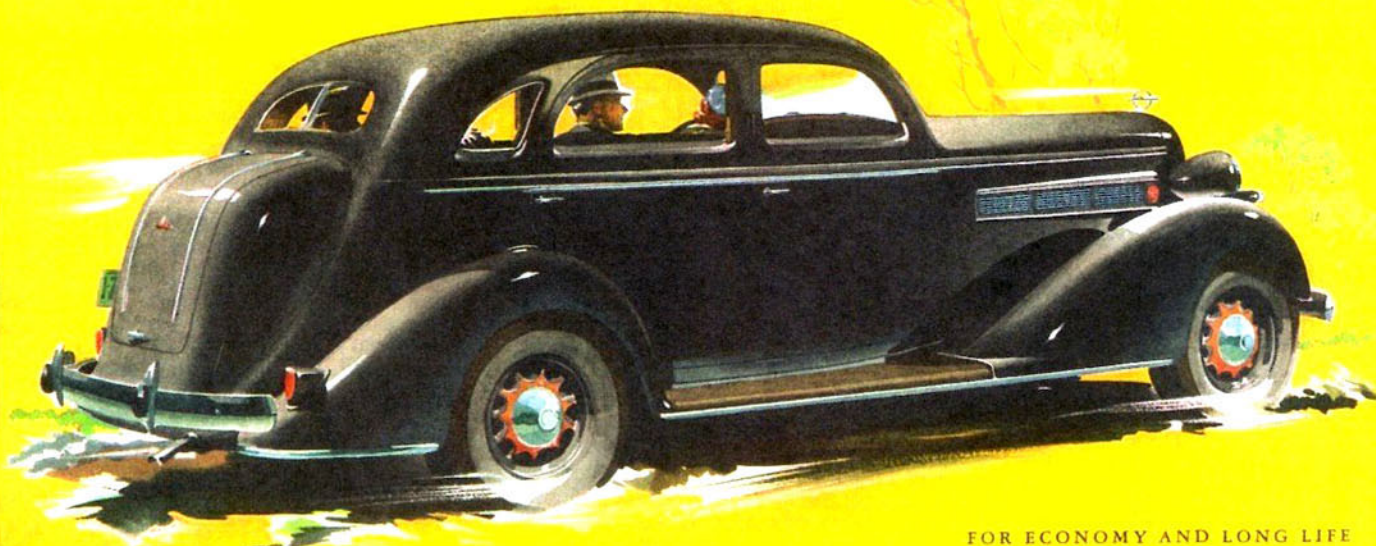


America's Finest Six



FOR ECONOMY AND LONG LIFE

... Thrilling in size, weight, power and beauty

ANY way you look at it—from the standpoint of impressive size, ample weight, power or beauty, the new Reo Flying Cloud immediately takes rank as *America's Finest Six*.

Here is truly a car that frees you forever from light-car limitations. Within the gracefully designed all-steel body, there's plenty of room for six husky "grown-ups". Reo engineers have provided the length, breadth and weight needed to give the perfect riding ease expected only in costly cars. And beneath the sleek hood, there's

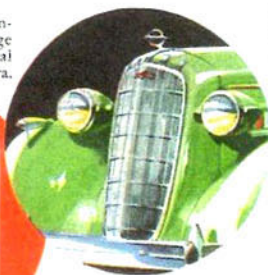
a big, powerful, long-lived Reo-built engine—smooth, quiet, eagerly responsive!

You'll find the new Reo a safer and more luxurious car for your family. *America's Finest Six* is built to the high standards traditional with Reo manufacture. Self-equalizing hydraulic brakes assure instant stopping. The double-

\$795—\$895 f.o.b. Lansing; subject to change without notice. Special equipment and tax extra.

strength, X-braced welded frame combines with low center of gravity to provide safety at high speeds. "Feather-touch" steering affords exceptional ease of handling.

Before you buy any car, see the new Reo for 1936. It's America's greatest value—in first price, operating cost and long, trouble-free service. Call your nearest Reo dealer today for a verifying demonstration. The new Reo C.I.T. 6% Plan now makes it possible for you to buy *America's Finest Six* on most favorable terms.



THE SIX WITH ALL

FINE CAR FEATURES