

"WHAT'S NEW ABOUT THE 1938 NASH?" -ALL OF IT!"



says **BOAKE CARTER**

- *CONDITIONED AIR for Winter Driving
- *NEW SOUND-PROOFING—25% quieter cars
- *Sensational new SUPER-THRIFT ENGINE
- *The ROOMIEST CARS in their field
- *Perfected AUTOMATIC GEAR-SHIFTING
- *The first FATIGUE-PROOF ride

In Every Way-It's a VALUE BOMBSHELL

Boake Carter went over the new Nash cars from bumper to bumper . . . checked up every feature.

"I've seen a *new kind* of automobile . . . a *new kind* of motoring!" he says.

"Here's the world's first car with a **CONDITIONED AIR** system for winter . . . you can drive in your shirt sleeves through sub-zero blizzards.

"Under the hood there's a new kind of engine . . . designed to cut out costly power-wastes . . . and perform brilliantly 365 days a year.

"I drove the cars over shockingly rough roads. Never felt a jolt. Nash engineers have worked miracles in utter **RIDING-SMOOTHNESS** . . . by per-

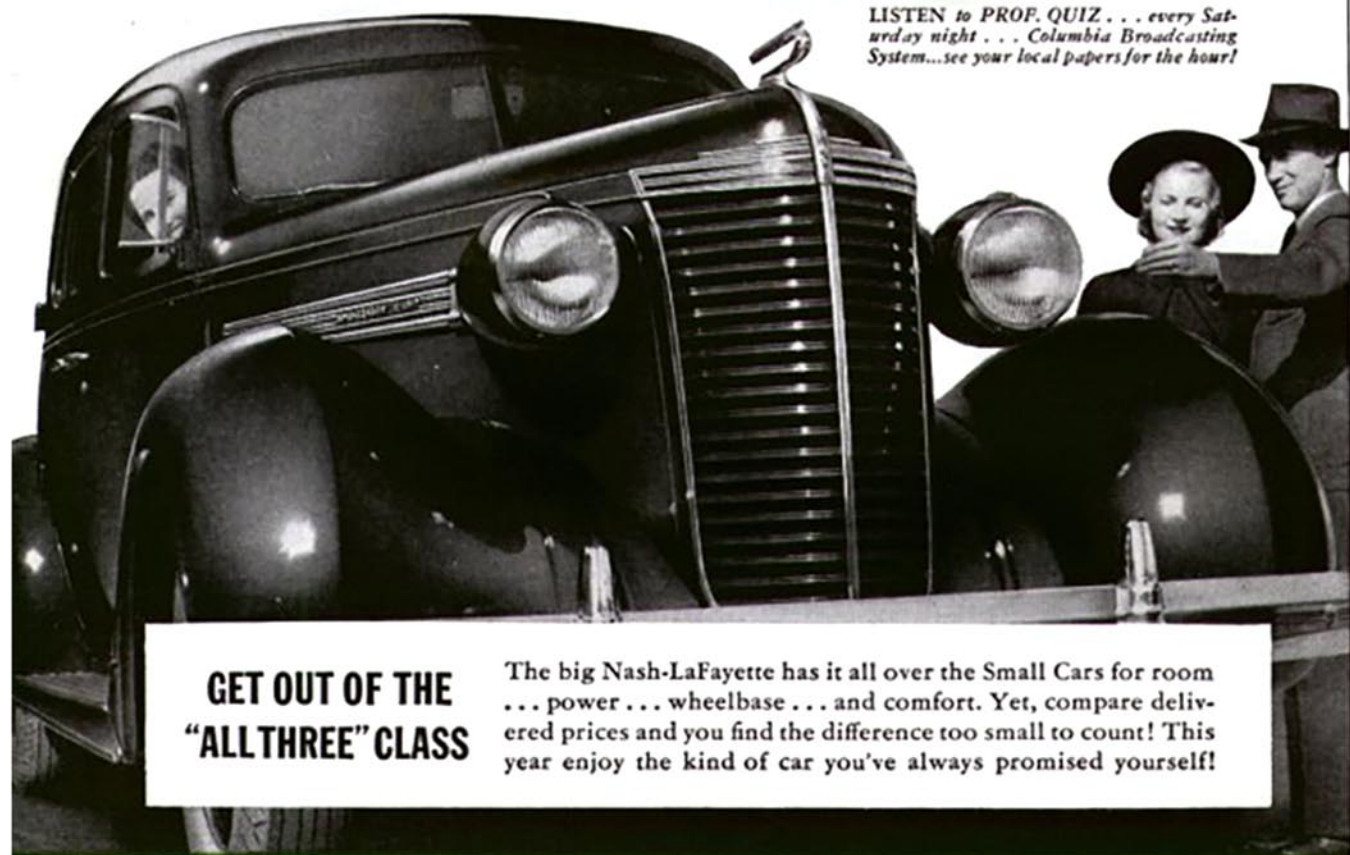
fect balance of car weight . . . springs synchronized like clockwork . . . and the amazing new 'SEA LEGS' that hold the big car steady as a rock on hair-raising curves!

"My advice is—drive the new Nash yourself. There are 83 real and important improvements."

These great new cars are now at your Nash dealer's . . . prices and values unmatched in any other cars this year! Go see for yourself.

3 GREAT 1938 NASH SERIES: LaFayette, 117-in. wheelbase; Ambassador Six, 121-in.; Ambassador Eight, 125-in. **NASH MOTORS DIVISION, Nash-Kelvinator Corp., Kenosha, Wis.**

LISTEN to **PROF. QUIZ** . . . every Saturday night . . . Columbia Broadcasting System...see your local papers for the hour!



GET OUT OF THE "ALLTHREE" CLASS

The big Nash-LaFayette has it all over the Small Cars for room . . . power . . . wheelbase . . . and comfort. Yet, compare delivered prices and you find the difference too small to count! This year enjoy the kind of car you've always promised yourself!

QUICK FACTS about Nash features

SUPER-THRIFT ENGINE

Modernized and simplified design . . . fewer parts . . . greatest engine advance in 20 years . . . 10% more power, 12% more gas-mileage . . . steps up combustion-efficiency in all weather.



CONDITIONED AIR SYSTEM

for winter driving . . . 70° in your Nash when it's zero outside . . . no more icy drafts, dust, window-steam . . . 1938 Nash is world's first car to have it!



LIKE WINGS ON YOUR CAR!

Automatic Cruising Gear—available even on lowest-priced Nash . . . saves gas and oil . . . lets engine run effortlessly . . . biggest thrill in motoring today.



"SEA LEGS"

Skyliner-type shock absorbers mounted a new way . . . act like "sea legs" . . . hold the car steady as a rock . . . and help lick all the jolts and bumps.



83 IMPORTANT NEW VALUE-FEATURES!

You Can't Beat A **NASH** *THE GREAT INDEPENDENT*