

STILL MORE of what it takes to make a GREAT GROCERY TRUCK

This year Ford gives truck economy and versatility a new meaning. For 1939 there are 42 different body and chassis types with a wide choice of equipment, including factory-installed 2-speed rear axle, optional gear ratios, transmissions and clutches.

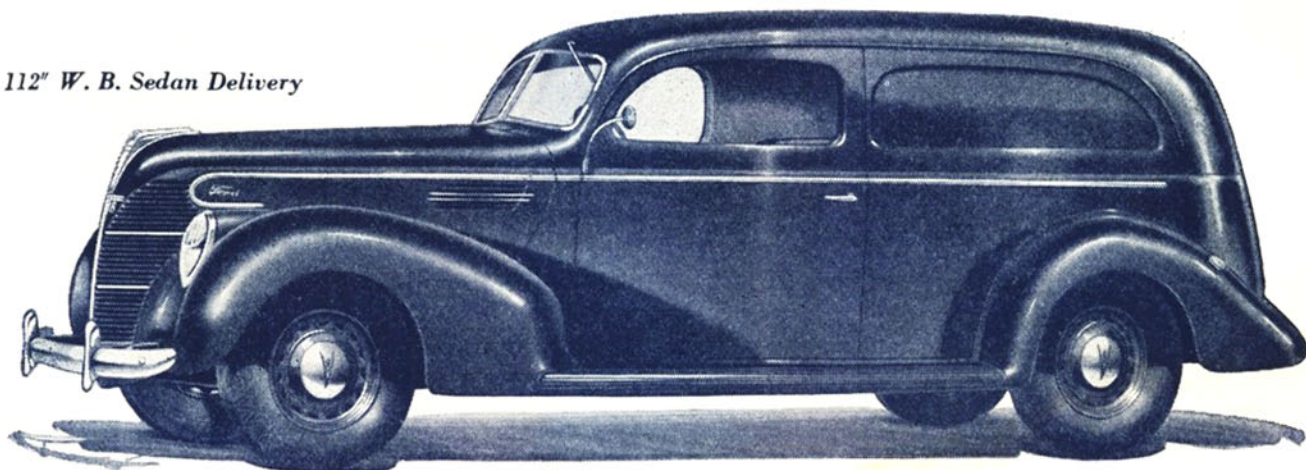
There is a Ford Truck or Commercial Car to fit every type of work in the grocery business, from the popular light duty pickup to the big Cab-Over-Engine unit. And there is an engine, too, for each purpose, for Ford has added to the time-proved 85 h.p. and 60 h.p. V-8 engines the new 95 h.p. V-8 engine for greater power

and speed. It is available in the regular and C.O.E. Trucks.

It is Ford dependability, low cost and economy that are responsible for the fact that there are more Ford Trucks on the road today than any other make.

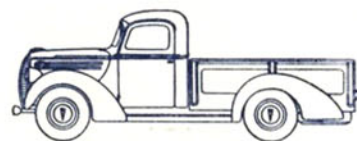
See the new 1939 Ford V-8 units. Match them up feature for feature with any other truck of comparable size and price. Know the difference before you spend another truck dollar. Arrange through your Ford dealer for a new Ford V-8 Truck to use for an "on the job" test.

112" W. B. Sedan Delivery



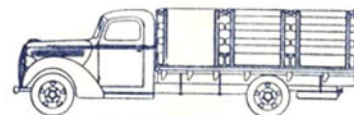
Highlights of the 1939 Ford Truck Line

- New-type piston rings for improved oil economy.
- Improved semi-centrifugal clutch—low pedal pressure—high-power transmitting capacity.
- Full torque-tube drive with radius rods.
- Full-floating rear axle ($\frac{3}{4}$ floating—112" w.b.).
- Straddle mounted driving pinion—ring gear thrust plate.
- Factory-installed 2-speed rear axle available at extra cost.
- Easy, dependable steering—worm and roller type.
- Tungsten steel valve seat inserts, intake and exhaust in 85 and 95 h.p. engines—exhaust in 60 h.p. engine.
- 34" frame width standard on all units.
- New hydraulic brakes.
- Ford engine and parts exchange plan—an exclusive Ford low cost maintenance feature.



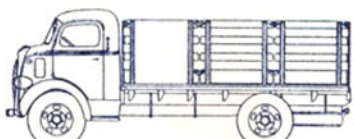
122-INCH EXPRESS

The 122" w.b. One-Tonner, Available with panel, stake, platform or express bodies—85 h.p. or 60 h.p. engine.



157-INCH STAKE & PLATFORM

134" and 157" w.b. regulars with 95 h.p. or 85 h.p. engines.



134-INCH C.O.E. STAKE & PLATFORM

Cab-Over-Engine Trucks—101", 134" and 157" w.b. with 95 h.p. or 85 h.p. engine.

FORD V-8 TRUCKS AND COMMERCIAL CARS FOR 1939