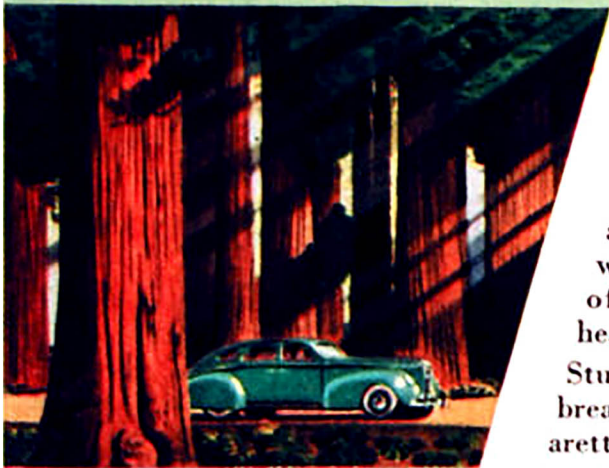


IT'S *Ho!* FOR STORMY WEATHER!



DON'T BE a "stay-at-home"! "Weather Eye"* works magic with Nash Conditioned Air System . . . a turn of a dial floods car with fresh air, kept warm as June. Automatic. Exclusive! No fogged windshield.



SILENT AS A FOREST . . . this smooth and restful ride . . . with new Soundproofing, and Nash Super Shock-absorbers (40% longer).

PICK OUT A DAY when there's murder in the sky, and only hardy souls dare venture out of doors.

Make that the day you learn about a Nash.

Without overcoats, mufflers, or gloves, you slide into the big, wide seat. You point that proud hood into the teeth of the gale and *let yourself go!*

A mysterious little dial is at your knee. Just "tune it" like a radio. Quick as a wink, with windows shut, there's oceans of fresh, clean air—exactly heated, without drafts.

Stuffy air—the moisture of your breath—the smoke of your cigarette—whisk away.

Outside, the mercury tumbles—the wind and your speed vary. *But you never feel it!* For this uncanny Nash "Weather Eye" outguesses the weather! Keeps

your comfort constant.

Like a moving picture, the storm battles outside . . . while you sit in your shirt sleeves . . . relaxed . . . enjoying every minute!

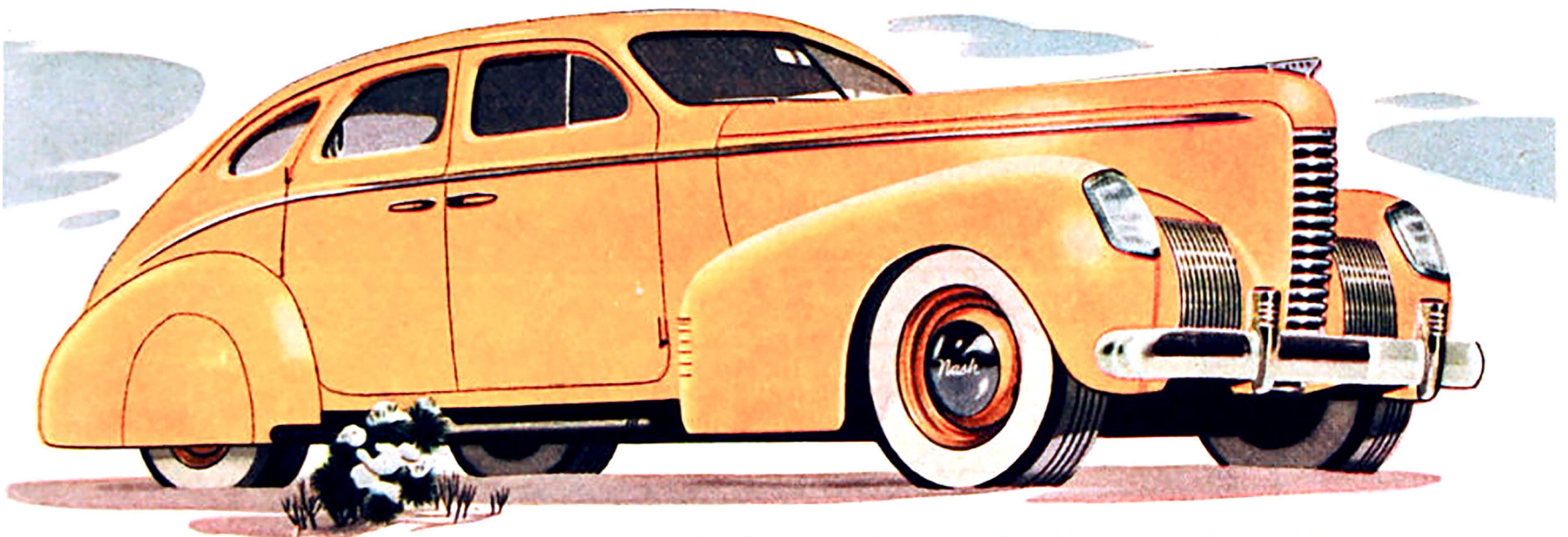
• • •

Want to know more? Touch that throttle—learn what we mean by "a hurricane of power"! Try that wheel . . . those brakes . . . the new steering post gear shift*. See the bed-in-a-car, look at the appointments . . . then, *quick*, ask the price.

For once, it's good news! *Ten* models priced next to the lowest! You pick the day—we'll furnish the car. Over 1800 Nash dealers offer nation-wide service. NASH MOTORS DIVISION, Nash-Kelvinator Corp., Detroit, Mich.

Four Series of Great Cars, 22 Models... 10 Priced Next to the Lowest... Delivered at Factory, as Low as \$770. Stand. Equipment and Federal Taxes Incl. (*Optional Equipment—Slight Extra Charge)

\$770



Car illustrated . . . 4-Door Sedan, 117-inch wheelbase, \$840 delivered at Factory . . . Standard Equipment and Federal Taxes Included . . . White Sidewall Tires and Rear Wheel-Shields are optional at Extra Cost.

NOISELESS WINGS. Automatic 4th Speed Forward* buoys you over space. Saves up to 20% on gas.



It's that New **NASH**

THE CAR THAT EVERYBODY LIKES