

Night Flight



EXCLUSIVE with Nash . . . manifold-sealed engine pick-up of 15 to 50 MPH in 12.9 seconds, high gear; also, an economy class-winner in the Gilmore-Yosemite Run (21.25 miles to the gallon).



BADLAND ROADS are smoothed by the Arrow-Flight combination of individual coil springs in front—super shock absorbers controlling long, synchronous springs in back.

THERE'S MAGIC in the air tonight. Fleecy clouds sail high above . . . and your road is a ribbon of glistening moonlight.

Keen and crisp is the whistling wind. But inside your Nash you're sitting snug and coatless, in the never-changing June of the "Weather Eye".

Far into the satiny night your Sealed Beam lights cut an arc of glareless day. Yawning bumps cast shadows ahead—but the line of your lights never wavers, so level is the Arrow-Flight ride.

You sit there . . . fascinated by the ease you take turns, curves, hills, without slewing or slacking . . . hands barely touching the wheel . . . eyes never leaving the road.

And as you ghost through sleeping town after town, in the soft, soundless stride of the Fourth Speed Forward, only the speedometer shares your secret.

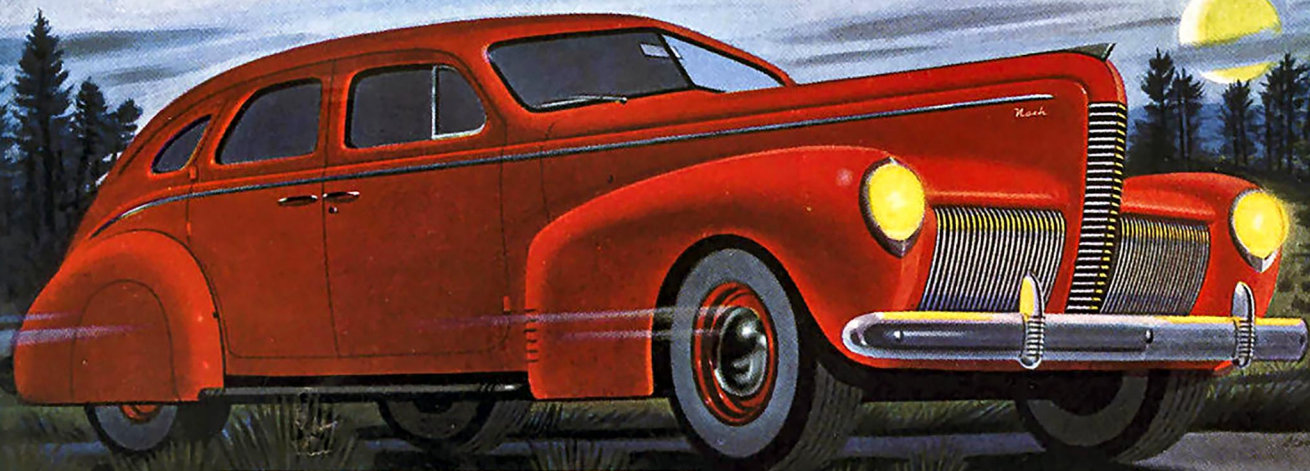
Then suddenly ahead, a tail-light blinks. But a gentle nudge of your toe, and the new Nash Automatic Overtake zooms you by in a terrific burst of sprinting power.

On and on you go, up starlit hill, down darkened dale . . . your heart singing with excitement . . . your Nash a silver phantom under the great white moon.

Sure, you can make up that convertible bed in back if you want to break the spell . . . but chances are that when the sleepy world awakes, you'll be whistling over breakfast, three states away.

It's only fair to tell you this. You don't need the thrill of a moonlight night. In 60 minutes, anywhere, a 1940 Nash will make you unhappy 'til you own it.

Luckily, it costs so little you'll jump at the chance to trade in your old car. See your Nash dealer today and find out!



GREAT DAYS AHEAD with Nash's convertible bed, and automatic "Weather Eye" for conditioned-air comfort, cleanliness, on trips. Nation-wide service by 1800 Nash dealers.

Again... **NASH**
IT'S THAT NEW