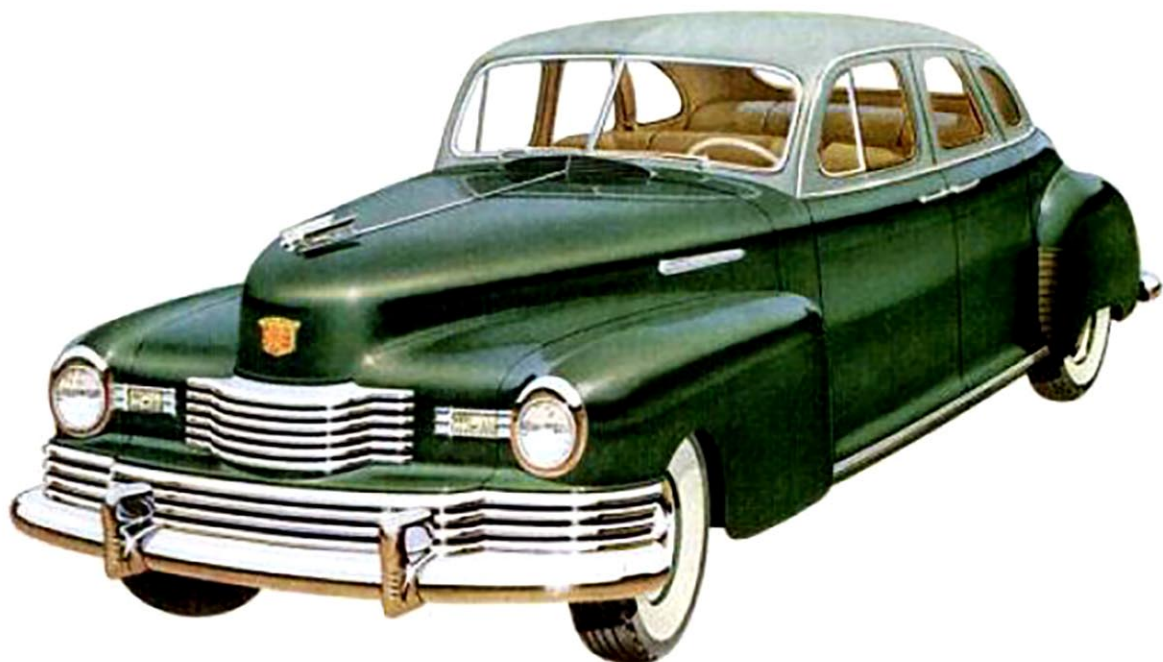


*We even engineer the air*



**YEN**—we have coil-springing on all four wheels, and that's wonderful.

**YEN**—the seats are wider in a Nash, and there's more headroom and stretch-room for everybody. And a Convertible double Bed, too, if you like.

**YEN**—a Nash "600" delivers 25 plus miles to a gallon at average highway speeds.

But this doesn't begin to explain the overwhelming and ever growing swing to Nash—

Because what people get in a Nash *can't be had in any other automobile at any price!*

We even engineer the air in a Nash. For with the famous Weather-Eye Conditioned Air System you

enjoy automatic heat and ventilation . . . freedom from overcoats and gloves, stuffy air, dust, drafts, fogged up windows.

You get the strength and quietness of a single, welded unit body and frame.

You get a *brand-new feel* to an automobile—a swifter, quieter, more enjoyable way to travel.

*And now get* the fine old-time ruggedness of a Nash—the dozens of quality features and extra values that have built a world-wide tradition of lasting dependability.

But words can't *tell* you what a Nash is like. Try one yourself—and *see*.



Product of Nash research and engineering, new Unitized body-frame construction sets the pattern for tomorrow. Built a new way, with frame and body *welded* into a single steel-girdered unit, it is lighter and immeasurably stronger. 8500 spot welds eliminate noise-making joints.