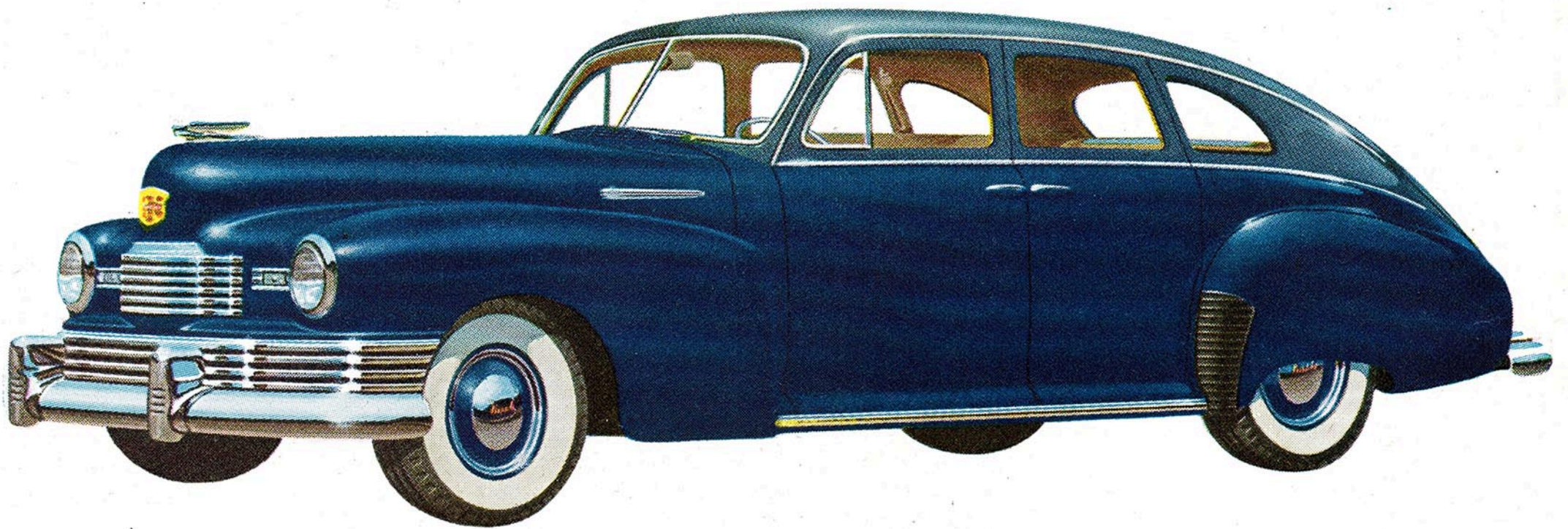


Paste this in
your hat



Sure as shootin' your next car will be an automobile like this Nash "600."

It's inevitable, because it's just plain sense.

Why should a gallon of gasoline produce only 15 to 20 miles of transportation, when—in a Nash "600"—that same gallon carries a carload more than 25 miles at average highway speeds.

Why should any driver in any weather suffer discomfort—when the man in a Nash enjoys automatic heat and ventilation that equals the comfort of home?

Why should cars rattle and squeak when—in a Nash "600"—lasting quiet is achieved in a welded, one-unit body-and-frame?

Why must car interiors be crowded—doors be narrow—headroom and leg-room cramped—when a Nash takes *six* six-footers *and* all their luggage!

Why should people put up with jolts when they can ride in a Nash and feel the *immediate* difference in *four-wheel* coil springing?

As sure as shooting, your car of tomorrow will have to offer what a Nash "600" does today.

Just paste this prediction in your hat . . . until you drive a Nash "600." Then you'll know why Nash owners are America's most enthusiastic car salesmen.



Product of Nash research and engineering, new Unitized body-frame construction sets the pattern for tomorrow. Built a new way, with frame and body *welded* into a single steel-girdered unit, it is lighter and immeasurably stronger. 8500 spot welds eliminate noise-making joints.

Nash Great Cars Since 1902
Nash Motors Division, Nash-Kelvinator Corporation, Detroit