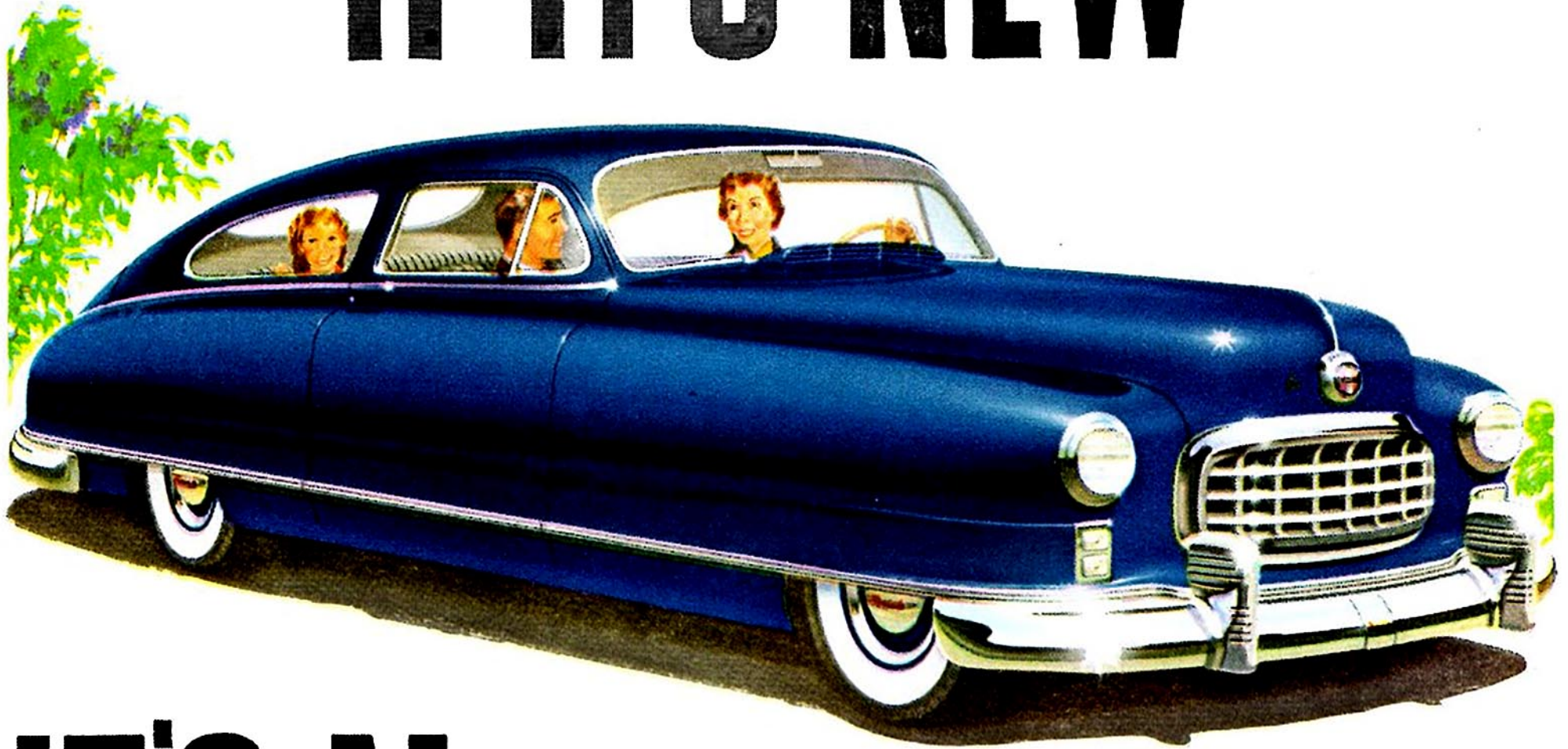


# IF IT'S NEW



# IT'S NASH!

**World's first cars with Girder-built Unitized Body and Frame... Skyliner-styled Interiors... Cockpit Control... Uniscope... Matched Coil Springs on all Four Wheels... Twin Beds... Uniflo-Jet Carburetion.**

That big, broad, *bold* look . . . that clean, unbroken fender sweep . . . that *Airflyte* look . . .

That's new—and *only Nash has it!*

The super-size interior . . . the seats that can turn into Twin Beds . . . the *full* leg-room, elbow room, head-room in a *low-silhouette* car . . .

That's extra value *you get only in a Nash!*

That sky-wide sweep of *undivided* windshield . . . the Uniscope . . . Cockpit Control . . . Weather Eye Conditioned Air . . . that *Airflyte* Ride, with all four wheels cradled by coil springs . . .

That's extra value *you get only in a Nash!*

That flashing, *silken* feel of Uniflo-Jet carburetion . . . that economy of more than 25 miles to the gallon at average highway speed in the big Nash "600" . . .

That's performance *you get only in a Nash!*

The new, better way to build an automobile—

the Girder-built Unitized Body and Frame—that's one solid welded low-slung unit . . .

That's extra value *you get only in a Nash!*

Treat yourself to the greatest buy you ever had in an automobile. Compare the Nash Airflyte *for value* with any car you know, at *any* price!

In two '49 series: the Nash Ambassador and Nash "600."

**Nash**  
*Airflyte*

**Great Cars Since 1902**

Nash Motors, Division Nash-Kelvinator Corporation, Detroit, Michigan