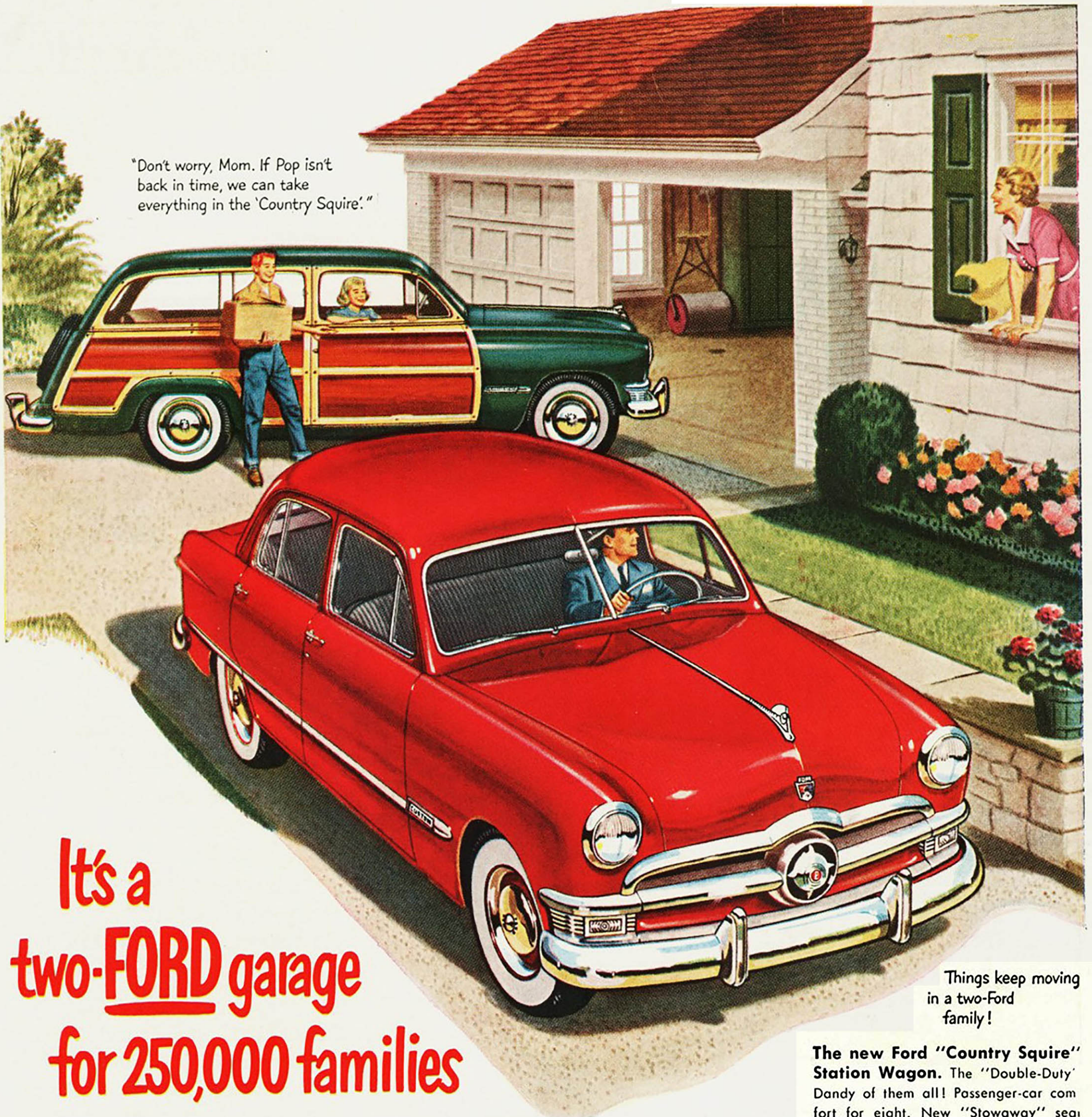


"Don't worry, Mom. If Pop isn't back in time, we can take everything in the 'Country Squire.'"



It's a two-FORD garage for 250,000 families

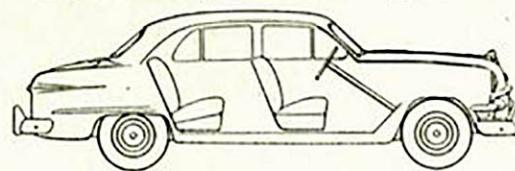
Things keep moving in a two-Ford family!

Yes, a quarter-million families now own two fine cars—and both of them are Fords! These families are enjoying the convenience other people dream about. And they've found that two Fords cost little more than one high-priced car.

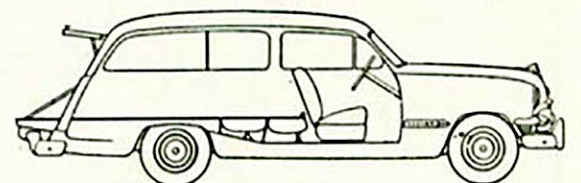
Fords are thrifty to buy, thrifty to run, and there's less dollar depreciation at "trade-in" time!

Chances are you are closer to being a two-car family than you think. See your Ford Dealer today and "Test Drive" the two '50 Fords shown here. The car you now own may well provide the down payment on both of them.

The '50 Ford Fordor Sedan. A smart, roomy car that's a pleasure to drive. With King-Size Brakes that act 35% easier. With a "sound-conditioned" Lifeguard Body and Sofa-Wide seats. With fine-quality coachwork and "jewel-box" interior styling that make it a "Fashion" standout! And with Ford's famous "Mid Ship" Ride to "float" you over the rough spots.



The new Ford "Country Squire" Station Wagon. The "Double-Duty" Dandy of them all! Passenger-car comfort for eight. New "Stowaway" seat and level tailgate give "Flat Deck" cargo space of 38.8 square feet—more level carrying surface than any other station wagon in its field. (Handles half-ton loads with ease.) A business cargo carrier as well as the family's "fun car."



White sidewall tires and wheel trim rings optional at extra cost.

There's a *Ford* in your future...with a future built in

