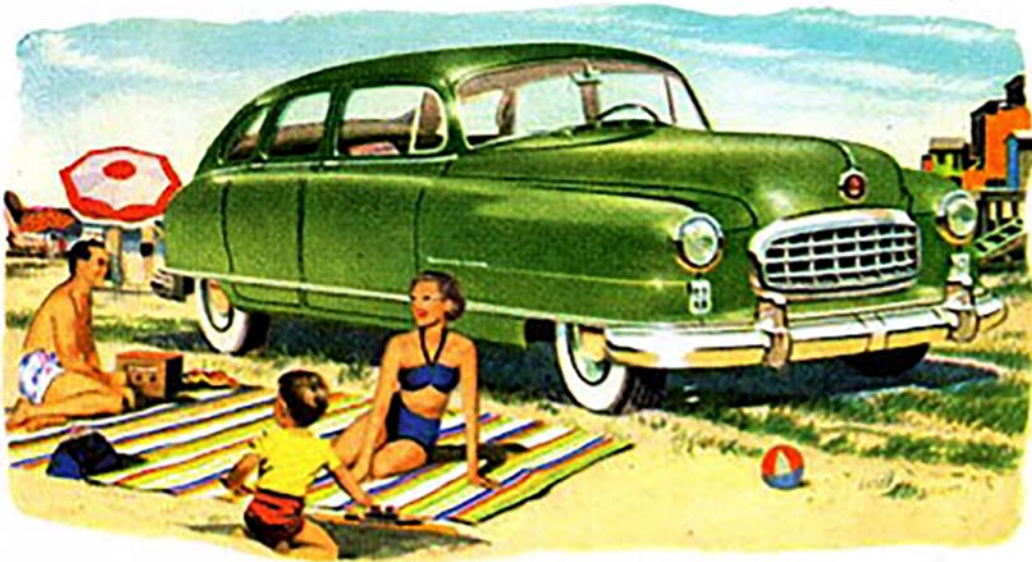


Be **HAPPY** with the car you buy

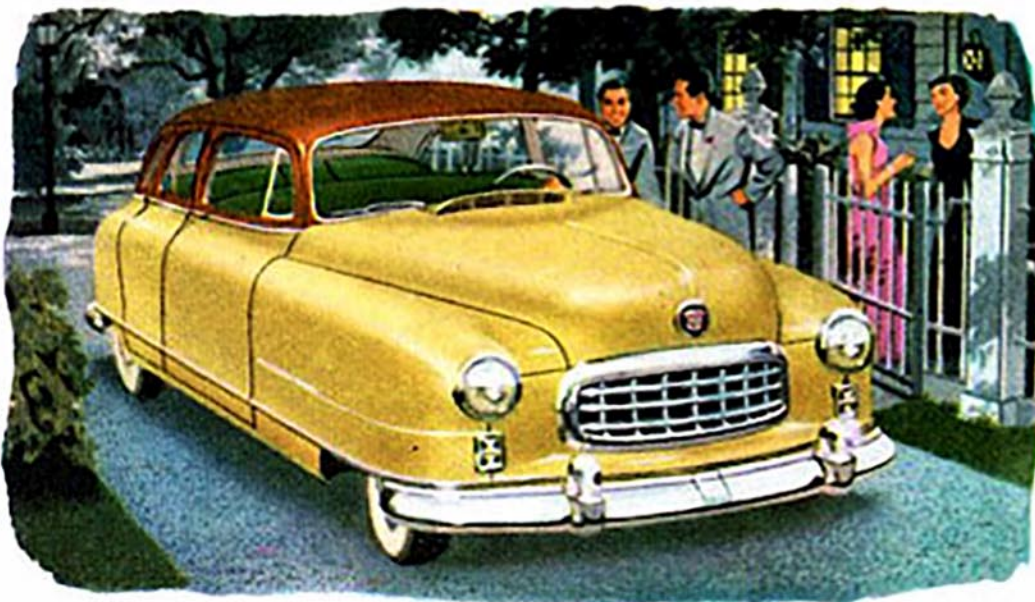


Sun fun!

You get so much more pleasure *out* of a Nash—because Nash builds so much more *into* it! The *Nash Statesman* has so much “living room” that seats turn into Twin Beds in twenty seconds! The largest luggage compartment! And this big, roomy car goes more than 25 miles on a gallon at average highway speed. All-welded Airflyte Construction makes Nash safer, smoother-riding, easier to handle.

Can't miss!

No wonder the folks you see driving the brand-new *Nash Rambler Airflyte Station Wagon* look happy as larks—they *are*! This power-packed Airflyte (the nation's lowest-priced Custom Station Wagon) delivers up to 30 miles a gallon at average highway speed. The low price includes as standard equipment a fine radio, the Weather Eye Conditioned Air System and altogether nearly \$300 worth of custom accessories, at no extra cost to you!



True luxury!

Here's everything you've dreamed of, in a truly fine car—the *Nash Ambassador* with Turbo-Head Super-Compression engine . . . the option of Hydra-Matic Drive . . . Twin Beds and Airliner Reclining Seat . . . Weather Eye . . . Airflyte Construction . . . coil springs on all four wheels . . . rich interior appointments.

See all three great Airflytes: *The Ambassador, The Statesman and The Rambler*—at your famous-for-service Nash Dealer's!

Nash Airflyte

*There's Much of Tomorrow
in All Nash Does Today*

Nash Motors, Division Nash-Kelvingator Corporation, Detroit, Mich.

The Distinguished **AMBASSADOR** • *The Popular* **STATESMAN** • *The Smart, New* **RAMBLER**