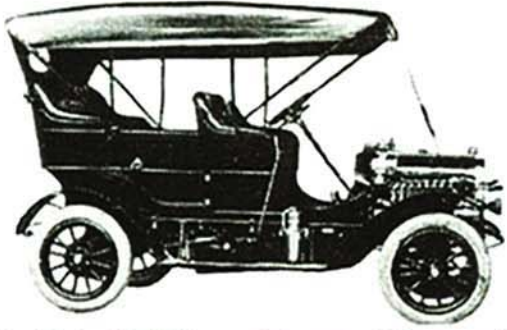


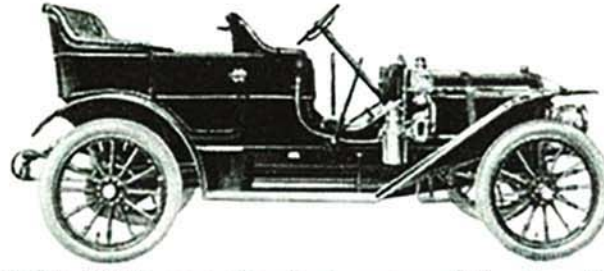
# Nash

## Great Cars for 50 Years

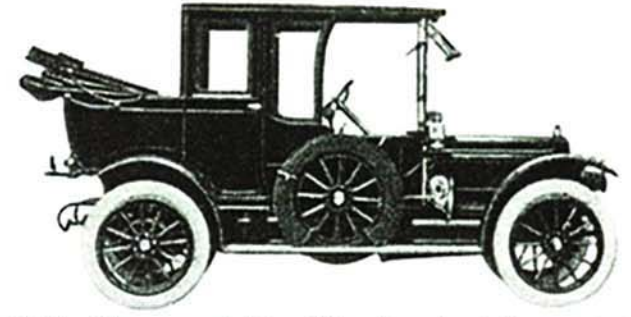
1902—In its first year, the Rambler became one of the World's first mass-produced cars



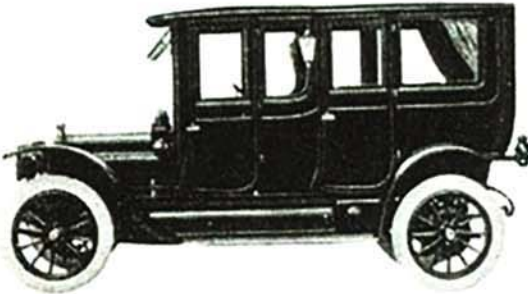
1907—This \$2,500 model seated five, weighed 2600 pounds, had a 40-horsepower engine.



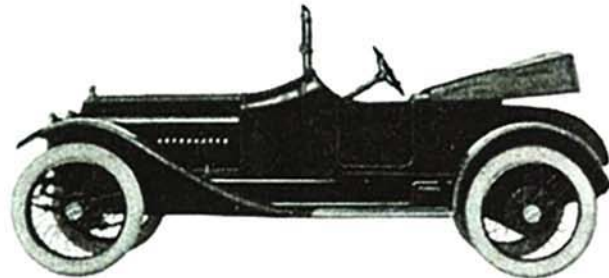
1909—This was the first automobile to offer a spare fifth wheel and tire.



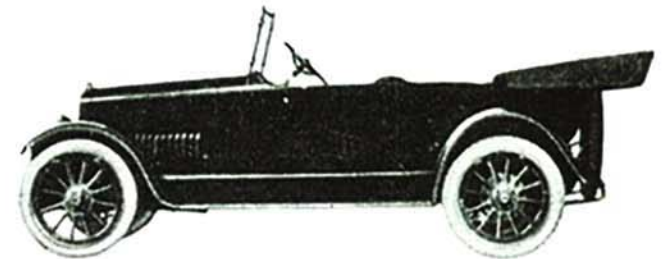
1911—The smart Rambler Landaulet was one of the early "convertibles".



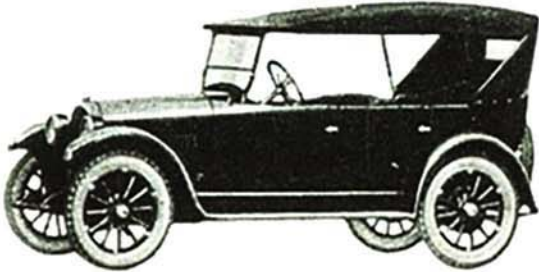
1912—The Rambler "Knickerbocker" Limousine carried seven passengers, sold for \$4,200.



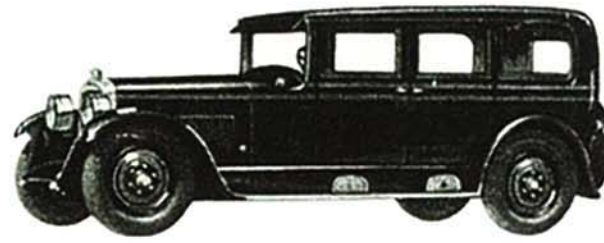
1914—This sleek car was named in honor of the founder, Thomas B. Jeffery.



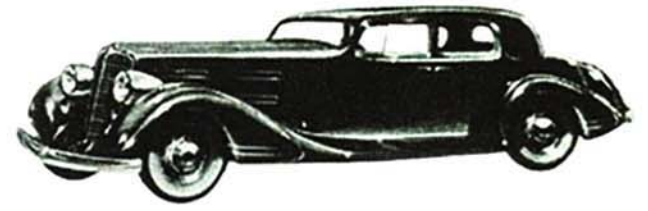
1918—Introducing the first high-compression, valve-in-head six-cylinder Nash engine.



1922—America's first car with the engine mounted on rubber to defeat vibration.



1928—Here was a big Nash car in a big Nash year. The 7-passenger sedan was a sales leader.



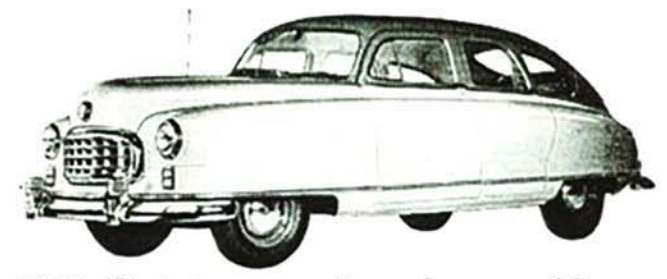
1934—1,000,000th Nash built. Clutch pedal starter, pioneered by Nash, was introduced.



1941—The greatest basic improvement in 40 years, Nash Airflyte body-and-frame.



1946—Nash becomes one of first manufacturers to resume production after the war.



1949—First true aerodynamic car with enclosed front wheels, christened "Airflyte".

TODAY—Fifty years later, the revolutionary Nash Rambler is writing success stories in sales, style, performance. This new, different kind of car, introduced in 1950, set the all-time record of 31.05 miles per gallon in the 1951 Mobilgas Economy Run.

## Nash Motors

DIVISION, NASH-KELVINATOR CORPORATION  
DETROIT, MICHIGAN

