

**ATTENTION**  
 • SPEED SHOPS  
 • CUSTOM BODY SHOPS  
 • SPEED EQUIPMENT MANUFACTURERS  
 For the benefit of the readers of HOP UP we would like to maintain an up to date file of all such shops in the U. S. and Canada. Send us your name, address and the major lines you handle. We'll be glad to use your name when answering inquiries in your area. Write: HOP UP, 4949 Hollywood Blvd., Hollywood 27, Calif.

*Ford Speed*  
**\$2 MANUAL**  
 → complete speed data  
 → informative fotos  
 → technical drawings  
**CALIFORNIA BILL**  
 Box 1293 H-10, Los Angeles 41

**PISTONS**  
 for *Speed*  
**POWER & MILEAGE**  
**WORLD'S LARGEST SELECTION**  
**For HIGHWAY or SPEEDWAY**  
 World's finest Pistons for EVERY ENGINE... for ordinary use or competition... for higher compression... for large over-sizes... for strokers... for ALL cars, old or new. Speed-O-motive has the RIGHT Piston for you. See your Dealer today.  
 Write now for your PISTON POWER BOOKLET. It's FREE to help you gain the maximum speed—power for your car. Dealer & Jobber Inquiries Invited.  
 9714-16 E. Garvey, Dept. HU-10, El Monte, Calif.  
*Speed O-motive*

**SEND FOR HIS GIANT AUTOMOTIVE CATALOG**  
 & Save to 50% on All Parts & Accessories  
**MOTORIST-TRUCK OWNERS-HOT ROD & SPORTS CAR ENTHUSIASTS**  
 1953 EDITION JUST OUT!  
 World's largest Auto Accessory & Parts Catalog. Over 50,000 items: Hollywood Accessories, Hi-Speed Equipment, Rebuilt Engines, Everything for all cars & trucks. We have that Hard-To-Get part. Jam packed with bargains. Completely illustrated. 134 pages. Send 25c (refundable)  
 J. C. WHITNEY & CO., 1917-BH Archer, Chicago 16

**WEIAND**  
**FINEST POWER and RACING EQUIPMENT**  
 Increase Power and Mileage with High Performance Heads and Dual Manifolds... STUDEBAKER • FORD • CHEVROLET • MERCURY  
 Send for Complete Catalog only 25c  
 7733 SAN FERNANDO RD. LOS ANGELES 65 CALIF



**M**EMBERS of the 200 MPH Club do not limit their activities to straight-away runs on the Bonneville Salt Flats. Art Chrisman, driver of the Chet Herbert streamliner in 1952, has been successfully active in drag racing for the last two years. Art has quite a reputation as a record holder at numerous drag strips in California. When Hop Up gave the Fastest Time of Day Trophy at a local drag meet with George Hill presenting the award, it seemed only fitting then that Art qualify as fastest driver of the day. Competition was strong but Art flew down the quarter mile asphalt strip to set a new record at 136.99 miles per hour. Trophy presentation that evening was a noteworthy occasion with one member of the 200 Club awarding fastest time of the day prize to another member. The odds against re-occurrence of this scene might as first seem high, yet, where you

find members of this club competing you will usually find one of them near the top. The first Firestone Bonneville Racing Tire was taken from the mold Friday, August the 17th and on the following Monday actual production was begun. An expected output of ten tires per day should prove to be more than enough to supply the demand at Bonneville this year. The extremely narrow tread surface designed to keep rolling friction at a minimum has a shallow herringbone design at either side to assist acceleration by affording better traction than the smooth, round, slick design. The special racing tubes have steel valve stems that are threaded from the base. The stem is locked into position by a hex nut and insulated by a leather washer. The leather washer prevents chafing between the rim and the locking nut. The stem must be securely anchored to

**AWARDING** fastest time of the day trophy at Santa Ana Drag Strip, George Hill congratulates Art Chrisman who set a new record at 136.99 mph in quarter mile.



the rim to prevent the valve being drawn through the rim by centrifugal force at high speed. The tube is designed with a heavy base gauge to reduce heat transfer from the brake and wheel to the tire.

Our column in the last issue told of plans to prepare a separate press release at Bonneville covering the activities of all 200 MPH Club members. Since that time we have been assured by the Southern Calif. Timing Assn. that a systematic process is in the development stages whereby official press releases will be issued each night to all members of the press and that it will be complete down to the qualifying speeds of every participant. Extra press releases might tend to create confusion among the press so we withdrew with the understanding that attention would be given the 200 Club members and their outstanding accomplishments.

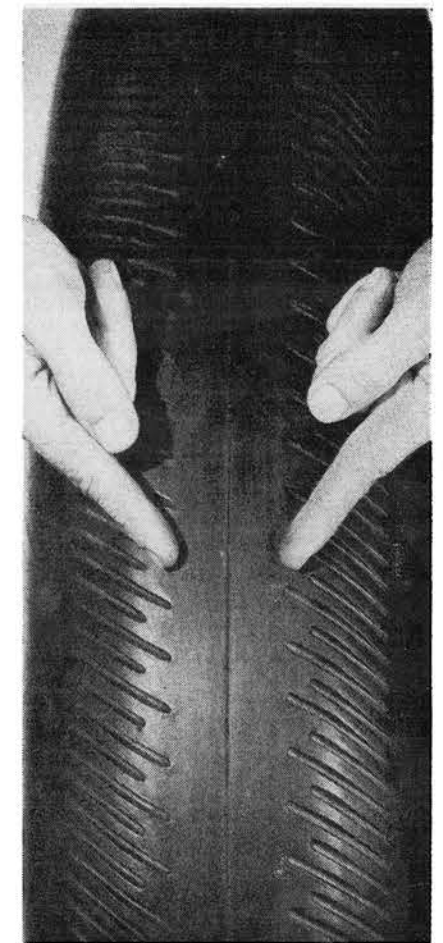
**REINFORCED** metal stem is used for safety in special Bonneville Racing Tube



**INSPECTOR** checks special vulcanizing mold upon delivery to curing room.

**RIGHT:** Special tire has very low contact area for minimum rolling resistance.

**FIRESTONE** development engineer is checking first Bonneville tire from mold.



**Death never takes a holiday!**  
**AUTO SAF-TEE BELT**

**PRICE:**  
 Double Belt Assembly (2 passengers) \$29.50 f.o.b. Los Angeles  
 Single Belt Assembly \$14.95 f.o.b. Los Angeles

**WITH SAF-TEE**      **WITHOUT SAF-TEE**

Play safe. Get the new, beautiful **IMPACT SAF-TEE BELT**, with many new improvements over our earlier models. Comes in colors to match your car: gray, blue, green, rust, black and natural, with attractive highly polished chromium buckle. **SAF-TEE BELT** is adjustable to fit either back or front seat of any car. Fits either full, split or bucket type seats. Takes less than 5 seconds to put on or take off. Comfortable, adjusts to your needs, won't wrinkle clothes. Reduces body fatigue by giving support in long drives, permits you to "ride" with car on curves; enables you to retain control over car in collisions.

Endorsed by Safety Authorities. Satisfaction **GUARANTEED** or money back.

**Ray Brown** AUTOMOTIVE COMPANY  
 5656 Santa Monica Blvd., Los Angeles 38, Calif.