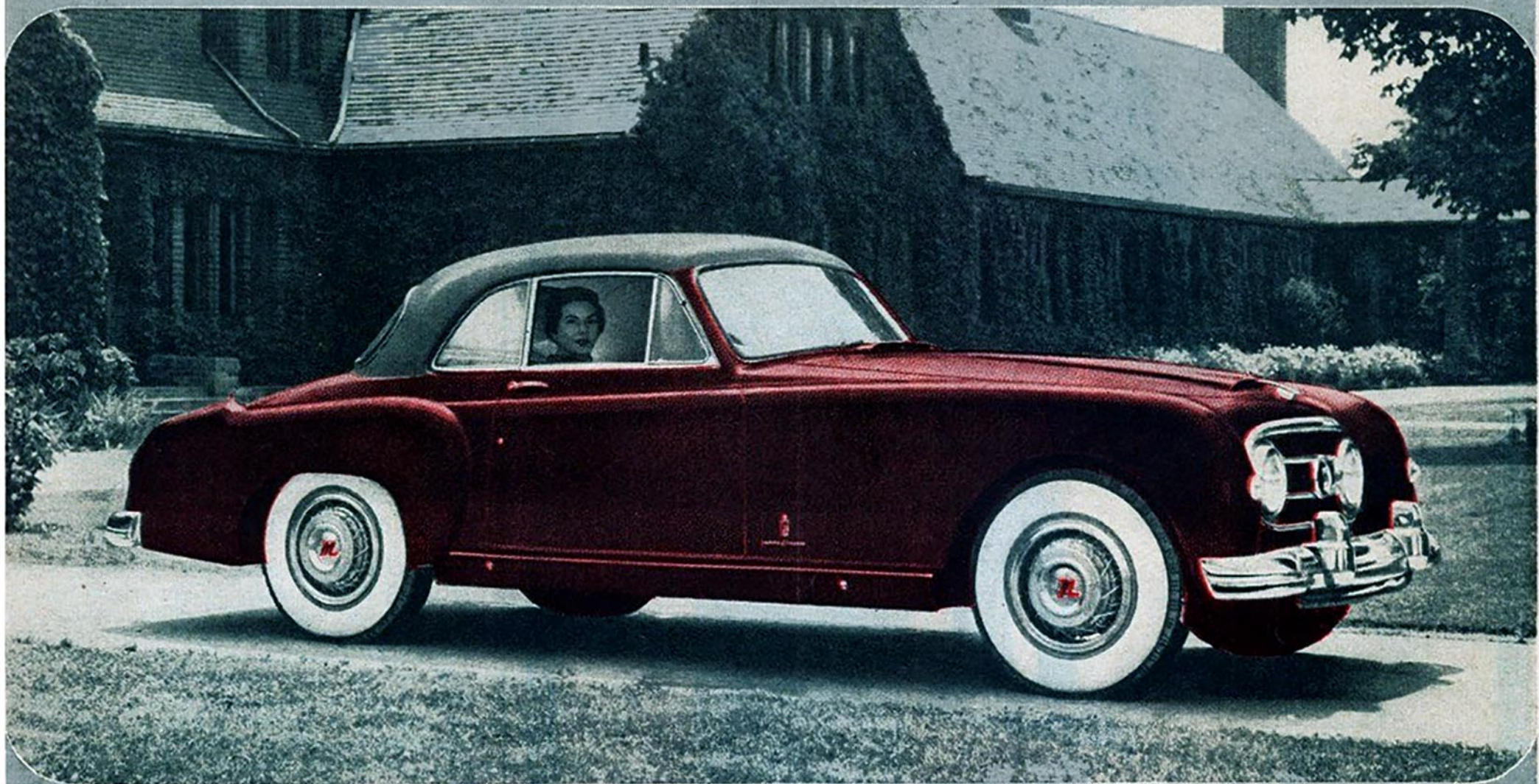


The Top Talent of Three Nations



HAS DESIGNED AMERICA'S SUPERLATIVE SPORTS CAR

Wire wheel trim adaptors are optional equipment

In all the world you'll find no other sports car like the Nash-Healey. For here is the best of three nations in one brilliant masterpiece.

In no other American car—only in a Nash-Healey—can you have true sports car styling with the flair and grace, the magnificent continental coachwork of "Body by Pinin Farina", hand-crafted in Italy.

In no other American car can you have the incredible sports car "cornering" of Donald Healey's famous "trailing link" front suspension and rugged British-built chassis.

Above all, in no other sports car can you enjoy the blazing performance of the Nash "Le Mans" Dual Jetfire Engine, proved America's finest in the world's greatest sports

car race. For no other American engine—regardless of rated horsepower—can match its consistent winning record in the 24-hour "Grand Prix d'Endurance" at Le Mans, France.

And, unlike others you read about, the Nash-Healey is *here now*, awaiting your personal inspection—in two distinctive models—the exquisitely beautiful Convertible—and the new Nash-Healey Le Mans Hardtop pictured above—first place trophy winner in the 1953 Italian International Concours d'Elegance.

Your Nash dealer will be happy to arrange a private showing at your convenience so that you may personally see and drive these fabulous new American sports cars. We suggest you phone him at your earliest convenience.

For a handsomely illustrated brochure on the Nash-Healey please write Sales Dept., Nash Motors, 14250 Plymouth Road, Detroit 32, Michigan.



Nash-Healey

A Custom Original by Pinin Farina