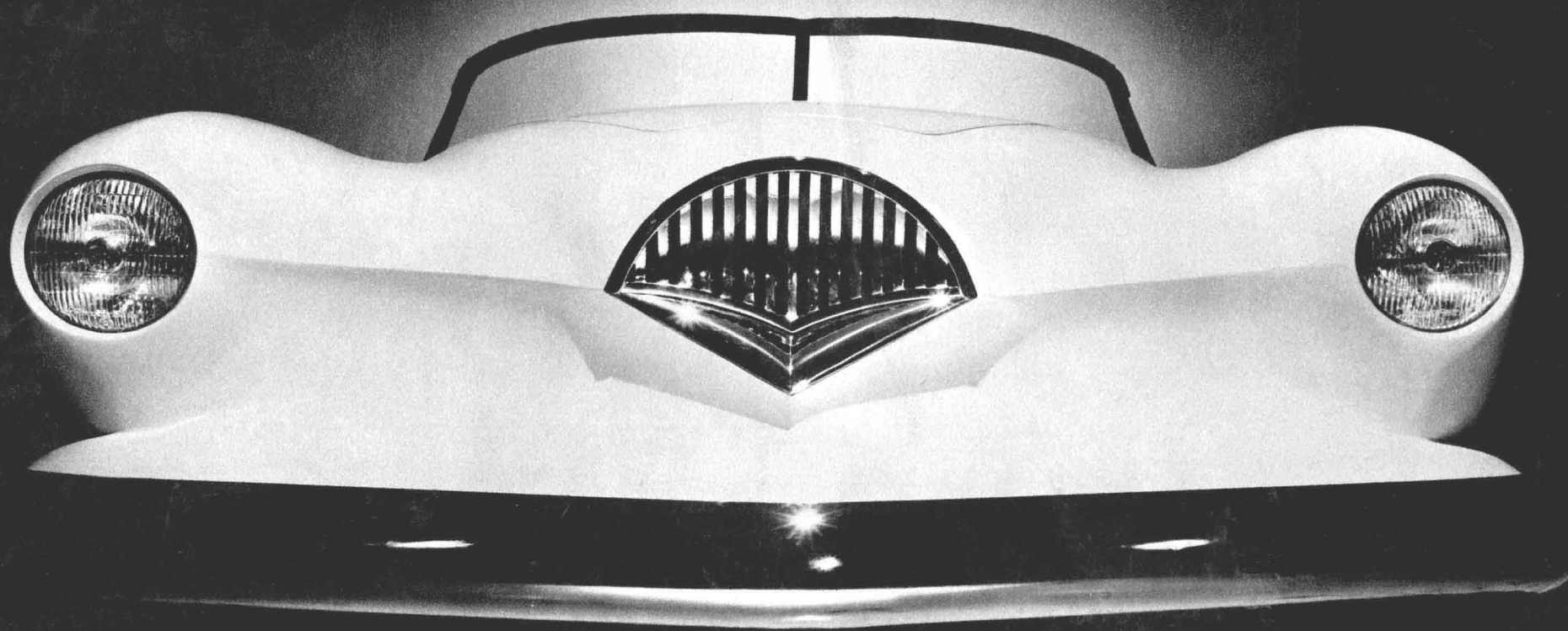


*KAISER-FRAZER
PRESENTS THE*

KAISER DARRIN

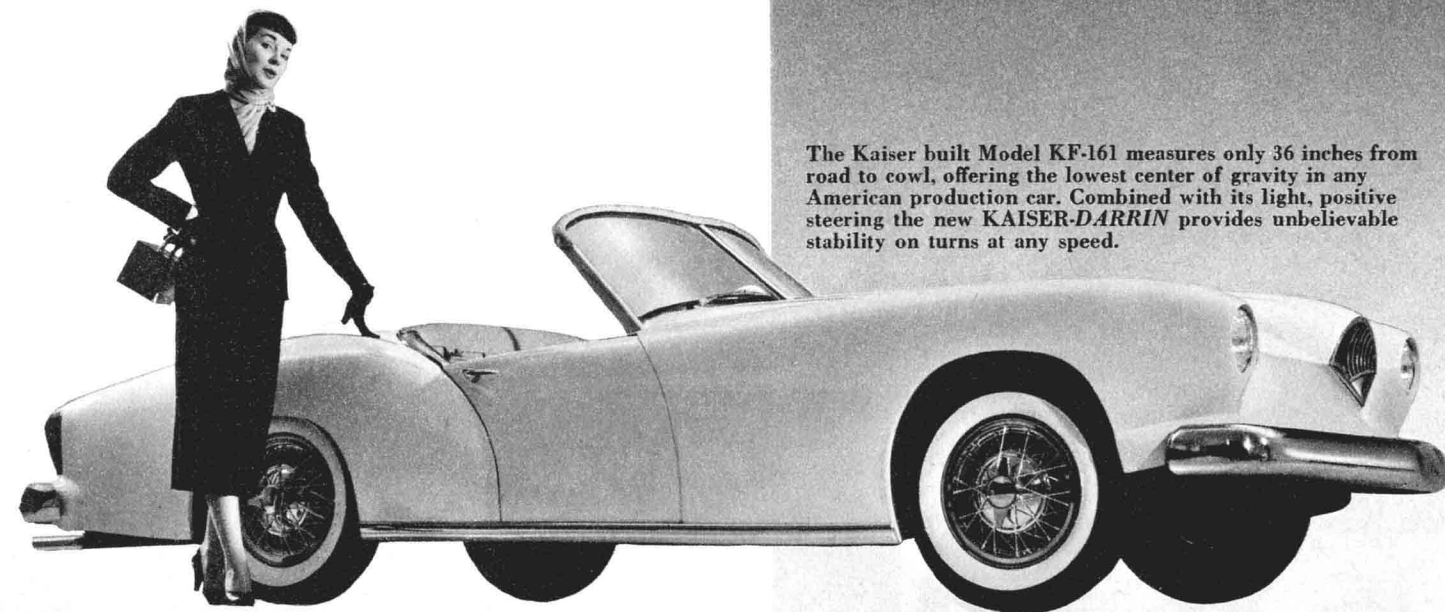


DESIGNED BY DARRIN OF PARIS

SOON IN PRODUCTION

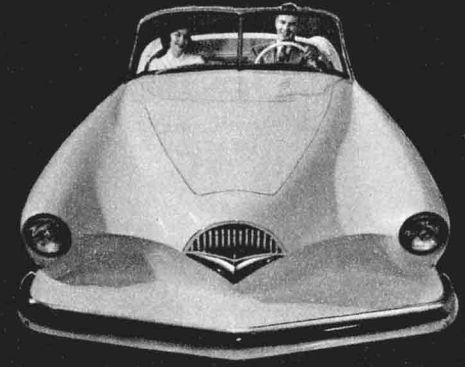
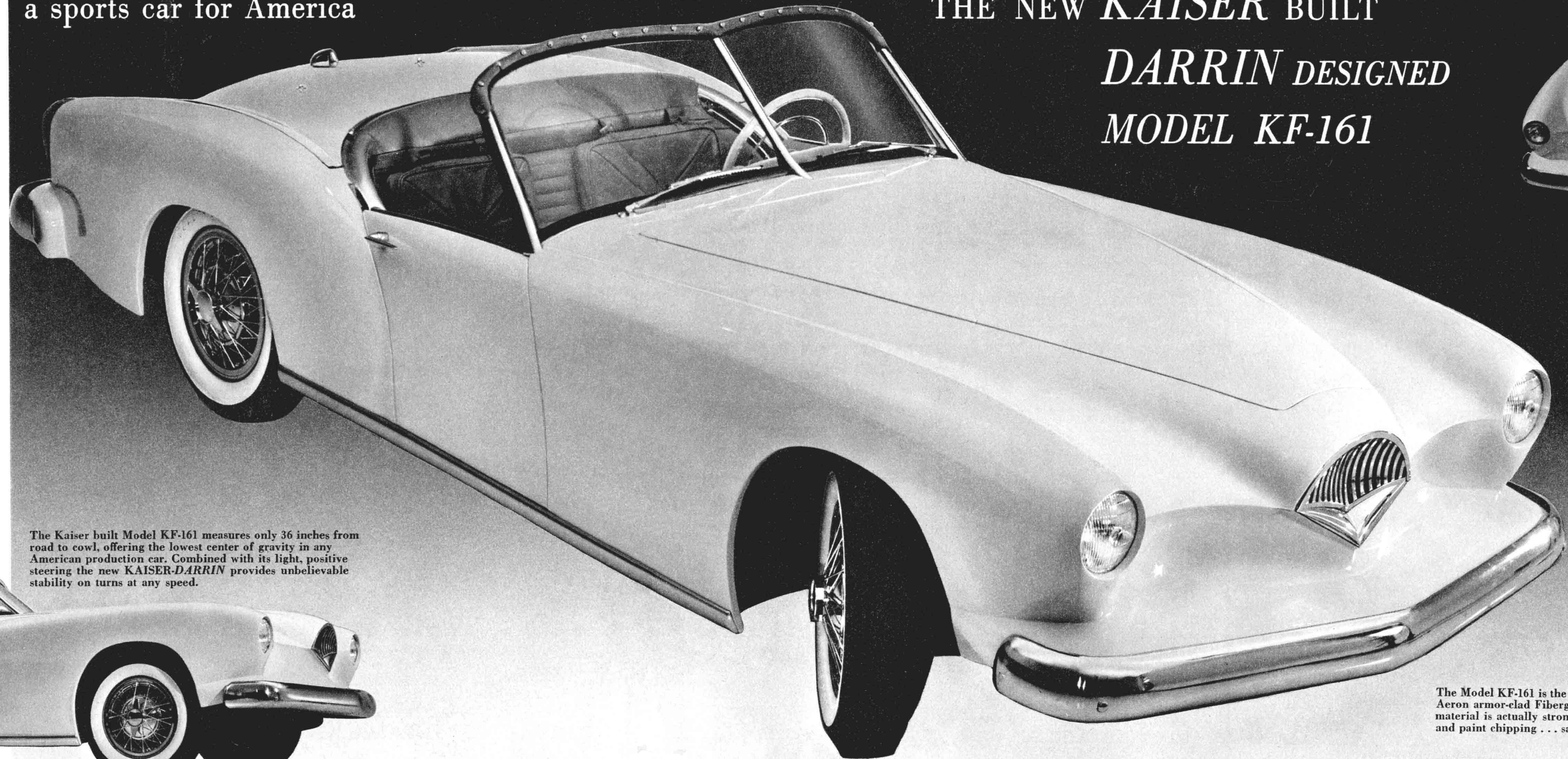
a sports car for America

The car all America has been waiting for, the magnificent new KAISER-DARRIN. The first American sports car combining new standards of motoring performance and luxury—providing new thrills for America's most discerning motorists. Engineered and built by Kaiser, designed and styled by Howard Darrin, famed architect of many European automotive masterpieces. A limited number of these cars are now being built at Willow Run, and you will soon be able to order one through your Kaiser-Frazer dealer.

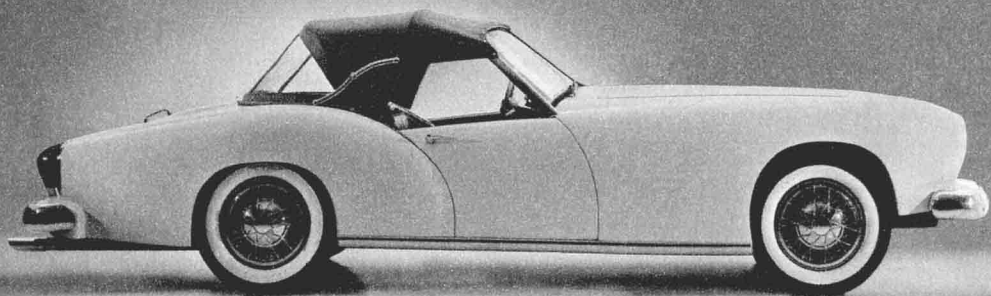


The Kaiser built Model KF-161 measures only 36 inches from road to cowl, offering the lowest center of gravity in any American production car. Combined with its light, positive steering the new KAISER-DARRIN provides unbelievable stability on turns at any speed.

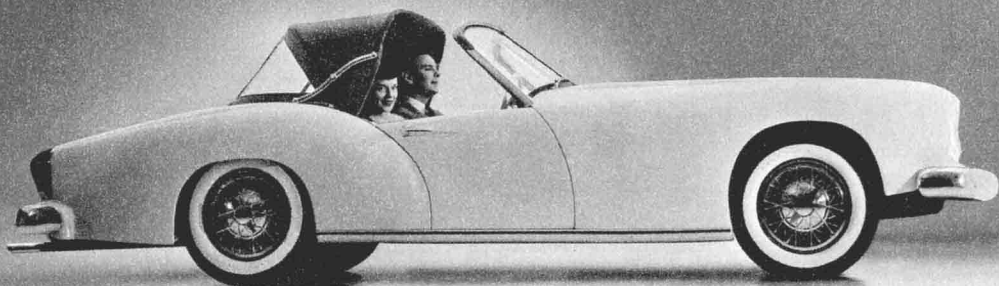
THE NEW *KAISER* BUILT
DARRIN DESIGNED
MODEL KF-161



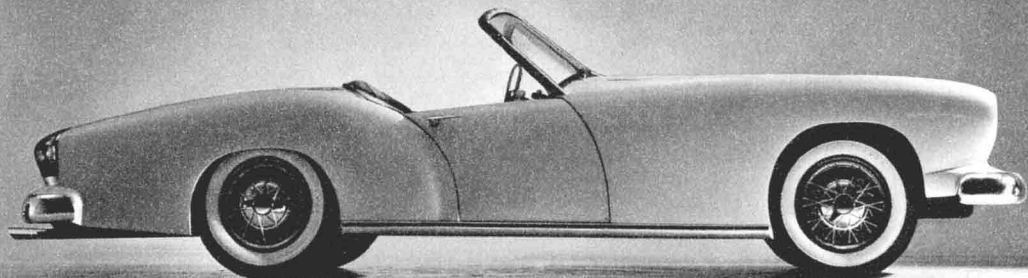
The Model KF-161 is the first American production car to use Aeron armor-clad Fiberglas replacing standard body metal. This material is actually stronger than steel by weight, free from rust and paint chipping . . . safer and more resistant to wear.

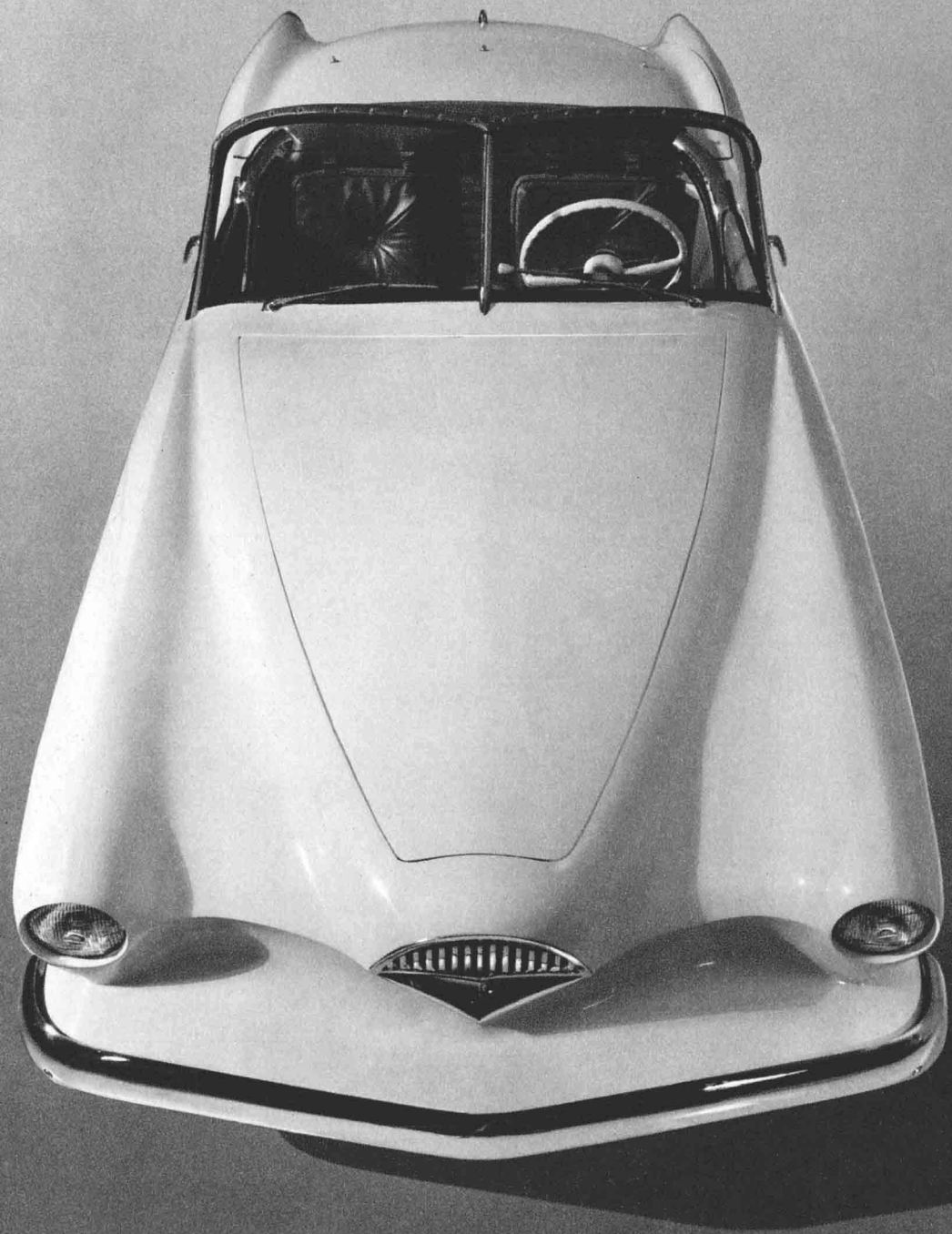


3 POSITION TOP—the durable nylon Deauville convertible top allows full visibility front and rear. It can be fastened in full position (above) or in the smart landau style (center). The Plexiglass full view rear window folds like cloth, yet is strong and durable.



When not in use, the entire top folds neatly into the rear deck, completely out of sight, providing the dramatically clean lines that distinguish the new **KAISER-DARRIN Model KF.161**.







The
KAISER built
DARRIN designed
Model

KF 161

Body—Aeron armor-clad Fiberglas.

Sliding doors—For the first time in any production automobile.

Engine—Modified Supersonic 6 with special high compression head, multiple carburetion, and dual exhaust system.

Performance—Ability to accelerate from 10-70 mph (high gear)—15 sec.

Weight per h.p.—22 lb. Truly a sports car in every sense of the word.

Kaiser-Frazer Sales Corporation reserves the right to make changes at any time, without notice, in prices, colors, materials, equipment, specifications and models, and also to discontinue models. White sidewall tires optional at extra cost.

© 1953 Kaiser-Frazer Sales Corporation, Willow Run, Michigan
Printed in U. S. A.

