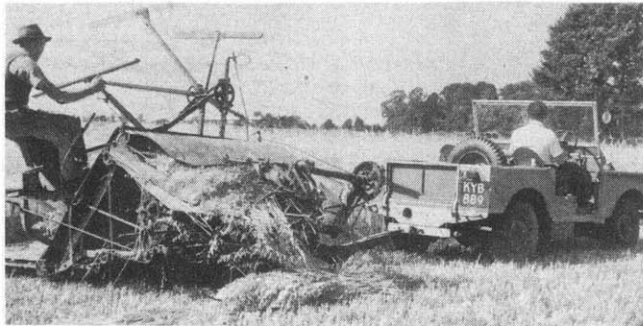


# BRITISH JEEP

*The world-famous American Jeep has a first cousin in the Land Rover which boasts versatility and economy.*



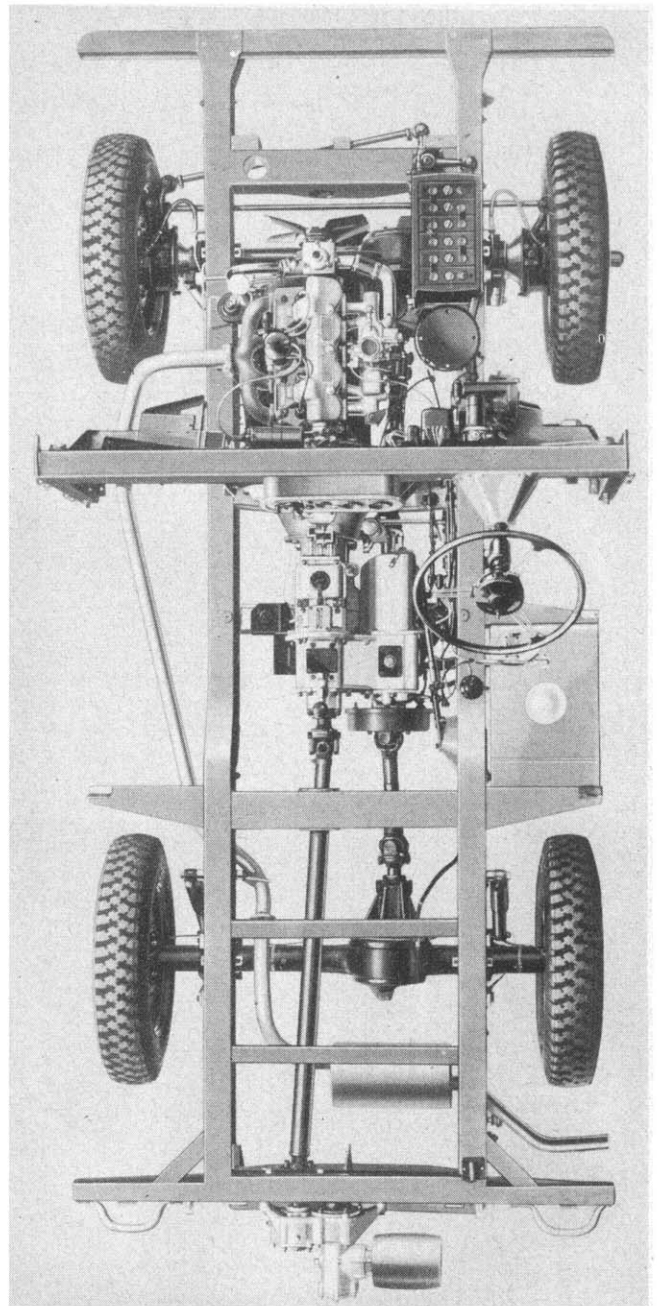
The Land Rover as a utility vehicle is comparable to the American Jeep. It can be adapted to many farm tasks.

**By TED KOOPMAN**

**W**ITH eight forward speeds and 4-wheel drive, the British 'go anywhere' vehicle can operate in places normally limited to caterpillar tractors. Highly versatile, the Land Rover is equally at home on the farm or the highway.

As a mobile power unit, the center power take-off may be harnessed to the many implements requiring V belt drives; the rear take off is adaptable to that equipment requiring positive shaft or flat belt motivation. Fast and economical, the Land Rover is excellent for material delivery or transportation of work crews and can easily pull trailers loaded far in excess of its own weight.

This is not an adapted vehicle. The specially designed frame is of box section construction and although simple, is un-



Frame of the Rover is especially designed for its work. The 4-cylinder engine puts out 50 HP; drives the vehicle at 50 MPH.

usually rugged with a wheelbase of 80 inches, it provides exceptionally good maneuverability in limited spaces.

The 4-cylinder engine with a bore of 69.5 mm (2.74 inches) and stroke of 105 mm (4.13 inches), has a displacement of 1,595 cubic centimeters or 97.3 cubic inches and a rated output of 50 BHP. The high displacement to power ratio results from a specially designed cylinder head and combustion chamber.

The cylinder head joint is at an angle to the block with overhead intake valves and exhaust valves at an angle to the bore. This permits a very short flame travel from the centrally located spark plug.

Aluminum pistons with inverted V shaped heads conform to the combustion chamber and are fitted with two oil and two compression rings.

Geared for general service, the Land Rover develops a maximum draw bar pull of 2,000 pounds and road speed in excess of 50 MPH.

Resembling the U. S. World War II Jeep in basic design, this general purpose Land Rover fails to match our latest M-38-A1 Jeep in power and speed but it is better adapted to English needs with power sufficient for normal demands and a lower rate of fuel consumption. ☆ ☆