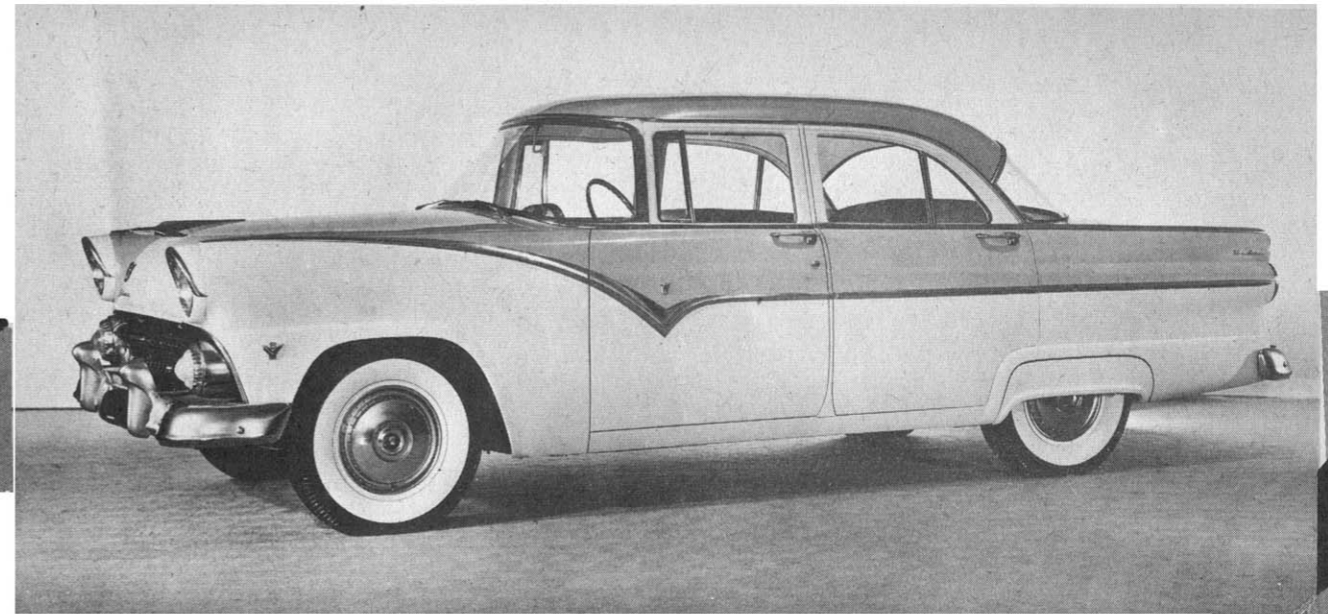
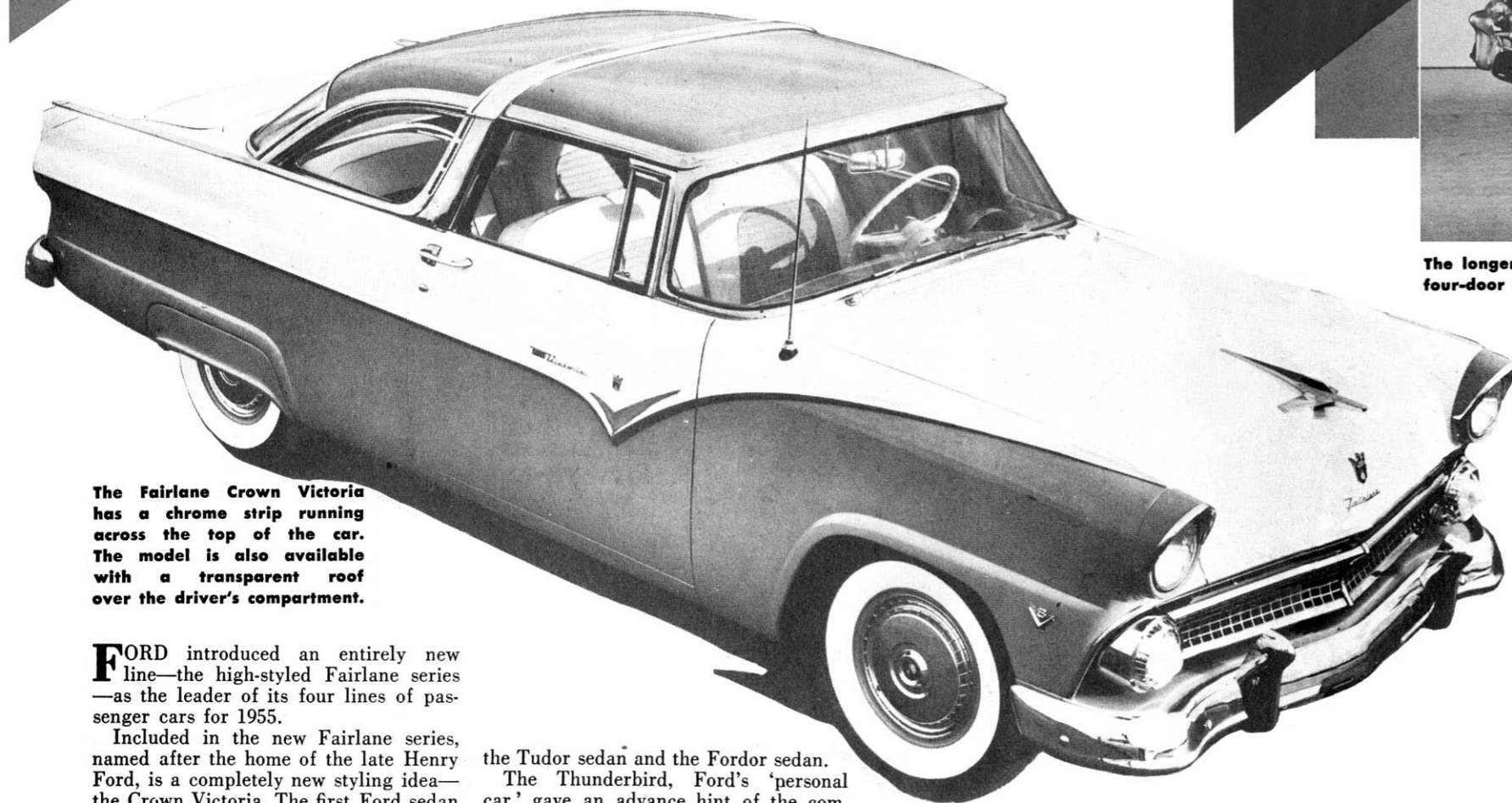


# The 1955 Ford



The longer, lower bodies of the new Fords, with the wraparound windshield, is shown here in the Fairlane four-door sedan. Both the Y-block V-8 and the I-block Six cylinder engines are offered by the company.



The Fairlane Crown Victoria has a chrome strip running across the top of the car. The model is also available with a transparent roof over the driver's compartment.

**F**ORD introduced an entirely new line—the high-styled Fairlane series—as the leader of its four lines of passenger cars for 1955.

Included in the new Fairlane series, named after the home of the late Henry Ford, is a completely new styling idea—the Crown Victoria. The first Ford sedan under five feet in overall height, the Crown Victoria has an arch of chrome over the top like a tiara. It is also available with a transparent plastic roof over the driver's compartment.

The line also includes the Sunliner convertible, the Victoria, the four-door Town sedan and the two-door Club sedan.

Ford, which produces 47 per cent of all station wagons sold, has expanded the series to five models with all-steel bodies—one more than in 1954. They are the eight-passenger Country Squire, with side moldings of wood-grained glass fibre; an eight-passenger Country sedan; a six-passenger Country sedan; a Custom Ranch Wagon, and a Ranch Wagon.

The Customline series offers the Fordor and Tudor sedans with chrome molding along the sides to provide clean, classic lines and to serve as a 'bumper' to protect the finish when a car door opens in the next parking space.

The lowest priced series include three models—the new Tudor Business sedan,

the Tudor sedan and the Fordor sedan.

The Thunderbird, Ford's 'personal car,' gave an advance hint of the company's styling trend when it was unveiled earlier. Measuring just 4 feet, 4.2 inches high in the hardtop model, the Thunderbird will accommodate three people, with rear compartment space for their luggage. It was designed for a combination of high performance with the comfort, convenience and safety of a conventional car. The adjustable steering wheel slides in or out three inches and can be locked in the position the driver prefers. A power seat is standard equipment.

Ford, which offered the first V-8 engine in the low-price field in 1932, has now introduced three new engines: a high compression Y-block V-8 engine of 272 cubic inch displacement and a 8.5 to 1 compression ratio; a powerful Y-block V-engine of 272 cubic inch displacement and a 7.6 to 1 compression ratio, and an improved six-cylinder I-block engine of 223 cubic inch displacement and a 7.5 to 1 compression ratio.

Dual exhausts, which provide extra power, are standard on all Fairlane V-8 and station wagon models.

A new, lower silhouette with modern styling inspired by the 'Thunderbird' distinguishes the four lines of passenger cars this year

Auto  
Review

Ford's new 'personal' car is the all-steel Thunderbird with a telescopic steering column. A semi-sports car, it is available either as a hardtop or a convertible.

