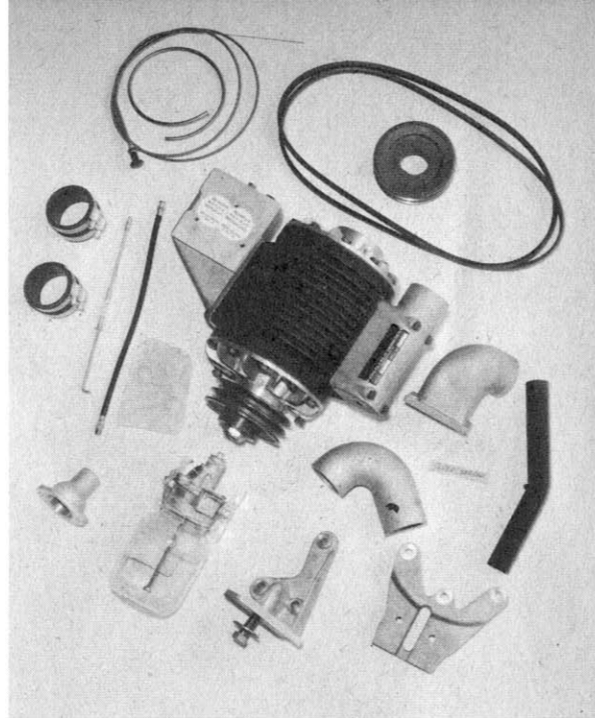
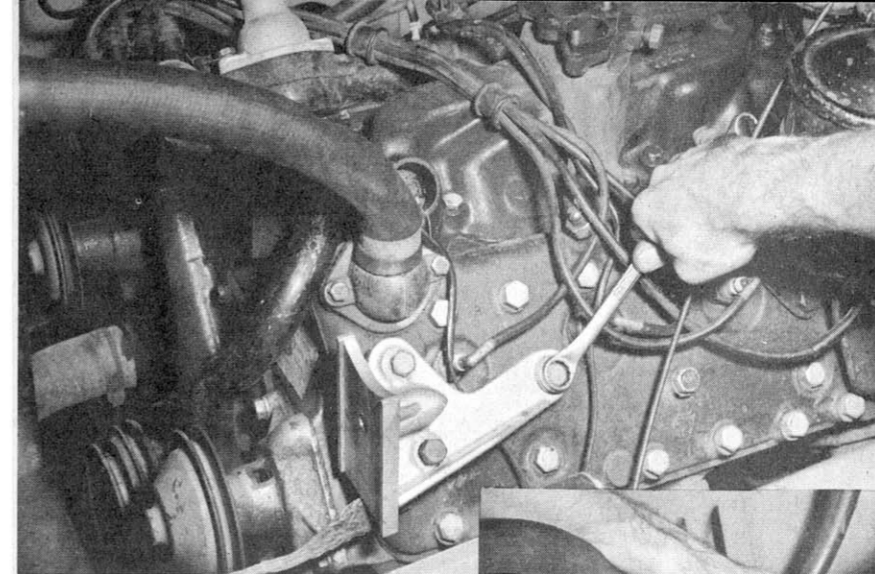


# Supercharging Revival

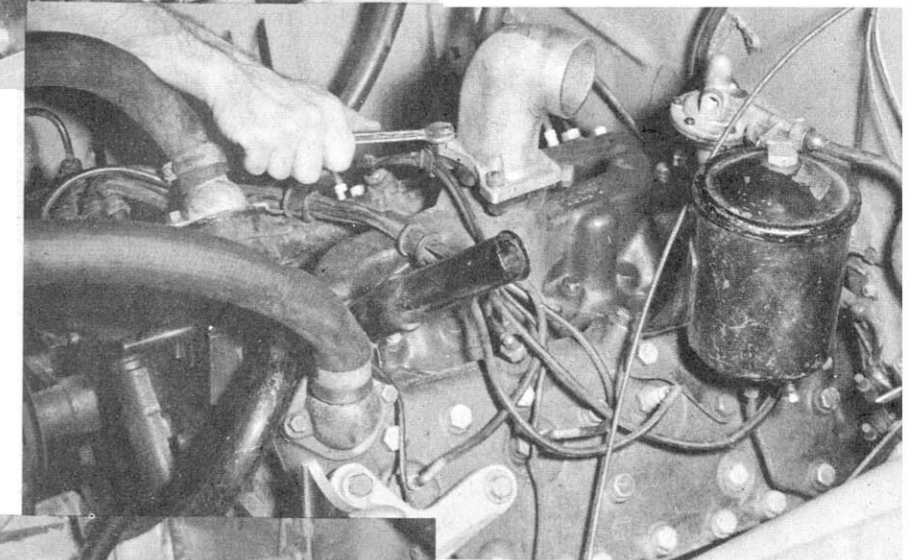
The Judson unit will enable the average motorist to increase the power output of his engine by 40 per cent



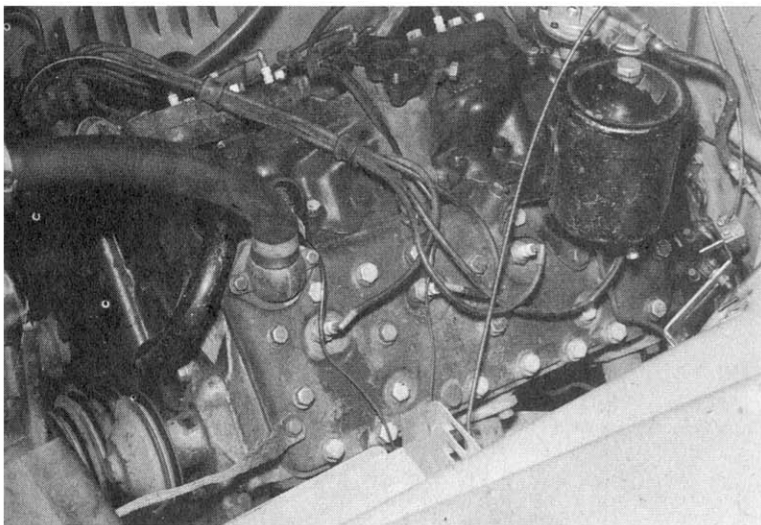
You can install a Judson supercharger in only ten easy steps with standard tools. Details of this method are shown here.



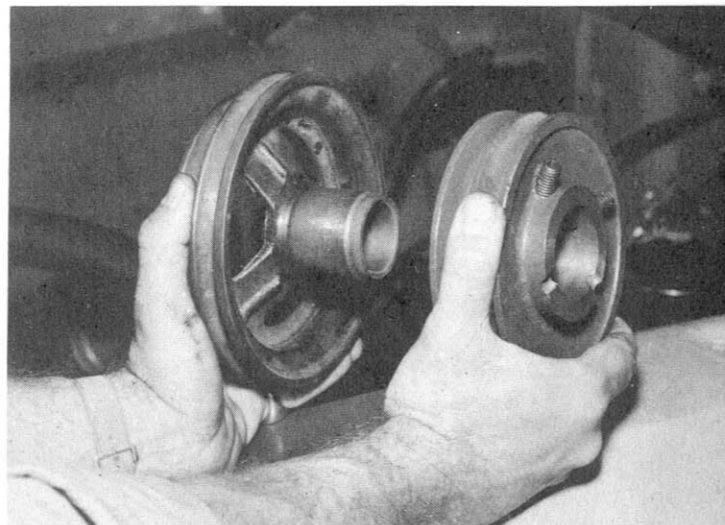
3. Bolt the generator bracket and right water outlet which comes with the installation to the engine as illustrated here.



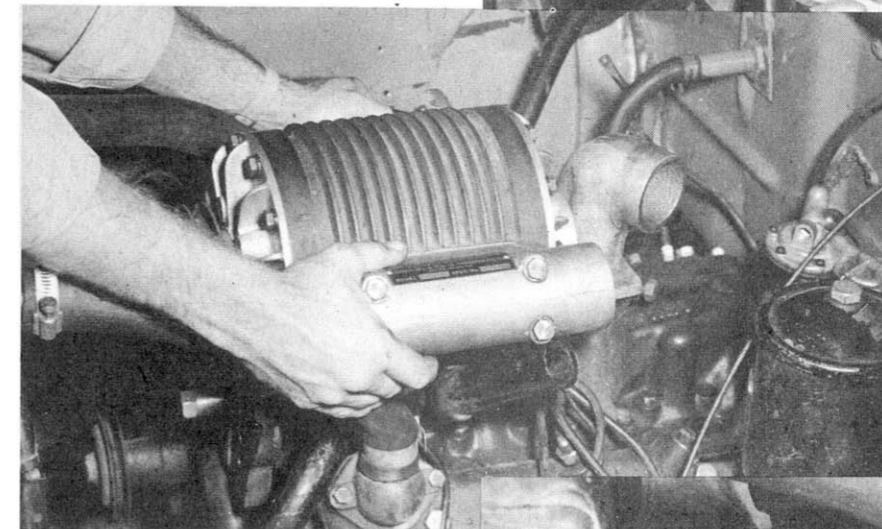
4. Bolt manifold adaptor to intake of the engine manifold using original studs. Insert oil filler tube into manifold.



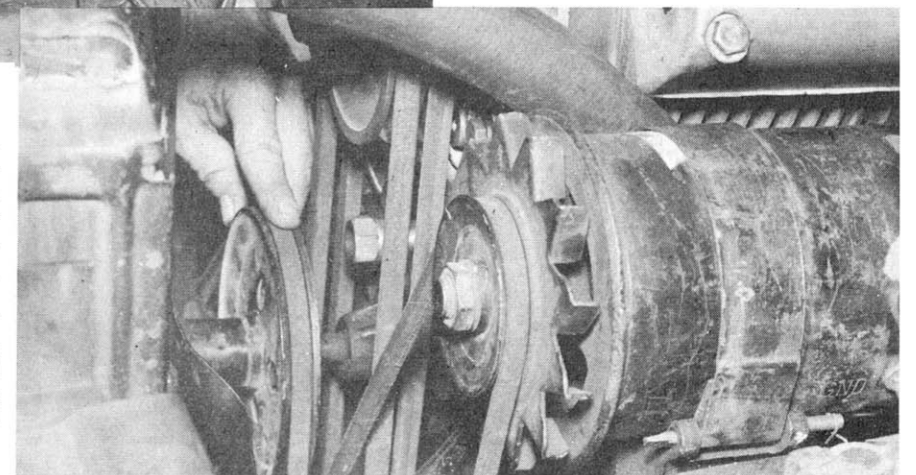
1. Remove generator bracket with generator, fan assembly, carburetor, right water outlet, oil filler tube and the crankshaft pulley from engine. Radiator stays in place.



2. Insert Judson pulley over sleeve of original pulley, by following the detailed instructions accompanying set, and place the complete pulley assembly on the crankshaft.



5. Remove supercharger seals and mount on engine using slot and bolt in manifold that held and positioned the generator.



6. Bolt original fan assembly to supercharger bracket, mount generator on the generator bracket. Install the drive belts and adjust for tension as directed.

ACCELERATION IN SECONDS			
MPH		Unsupercharged	Supercharged
0-30	} (standing start Fordomatic)	6.1	4.2
0-60		20.5	12.
1/4 mile		22.5	17.
0-30	} (standing start thru second gear std. transmission)	5.	4.
0-40		7.8	6.
0-50		12.	7.5
0-60		16.	11.
Engine HP @ 3800 RPM		110	148
HP at rear wheels @ 2000 RPM		48	70
Maximum speed, MPH		85	96
Fuel consumption (average) MPG		17	15.5
Noise level (Decibels)		56	56
MANIFOLD BOOST PRESSURE			5 P.S.I.
DRIVE RATIO, SUPERCHARGER TO CRANKSHAFT			1-1.14

TEST FIGURES ARE AVERAGE OF SEVERAL RUNS IN OPPOSITE DIRECTIONS. ENGINE UNMODIFIED AND STRICTLY STOCK. FUEL USED, ESSO-EXTRA (STANDARD OIL PREMIUM).

The noise level of the engine with supercharger is no greater than noise of engine without supercharger.

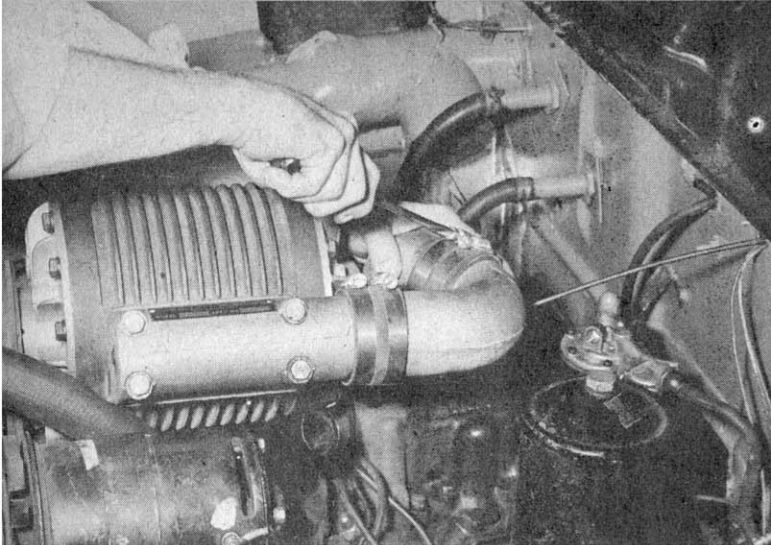
IN THE past few years very few automobile ideas have enjoyed a greater revival than that of 'supercharging.' At the same time, very few subjects have been more inaccurately presented.

Supercharging itself, although not new—in fact, it's been around since the early 1900s—has been reserved in the most part for the expensive, high-performance cars.

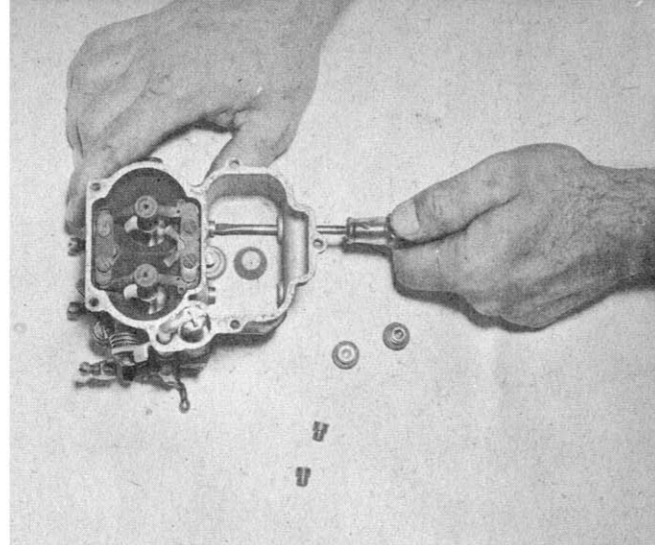
Of late, however, a good many low pressure units have become available to the average motorist, units that vary

from centrifugal pumps to true compressors, like Judson. And unlike many of its predecessors, the Judson has proven to be a completely reliable, low cost source of nearly 40 per cent additional power from a stock engine, without shortening the engine's life.

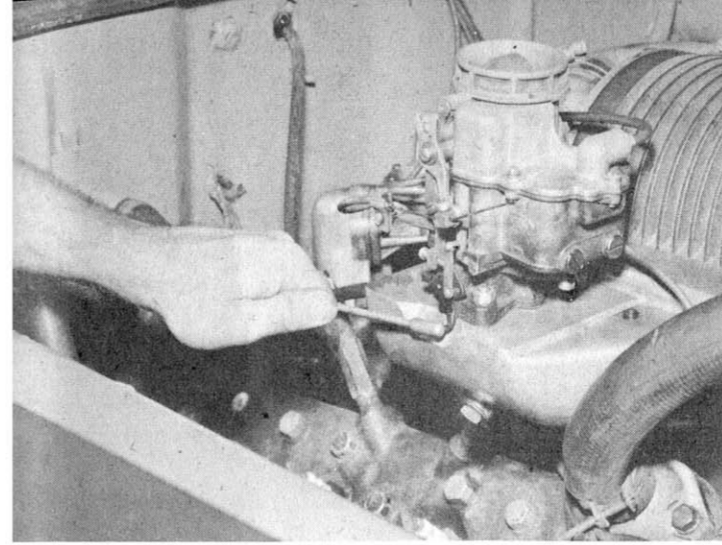
Installation is simple and almost any amateur mechanic can fit the Judson unit to the Ford, for instance, and realize an increase in performance that would cost far more by conventional means.



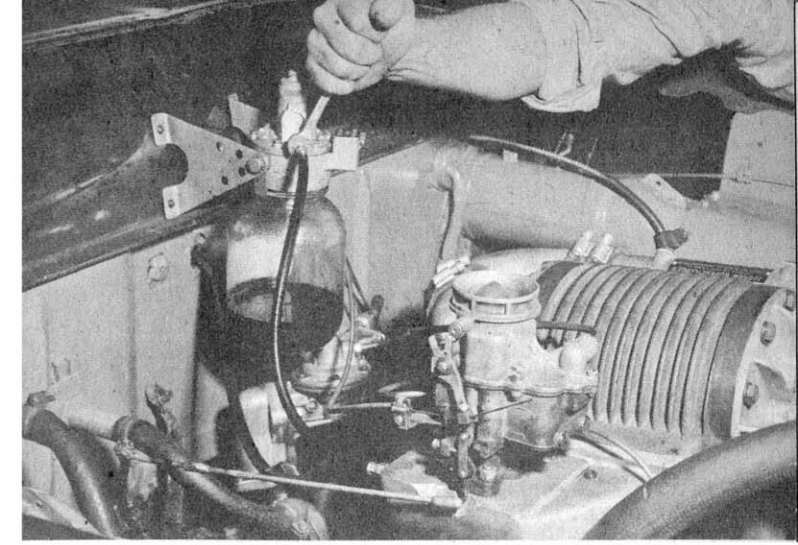
**7. Make connection between exhaust of supercharger and manifold adapter, using the curved tube and connections furnished with the Judson supercharger installation kit.**



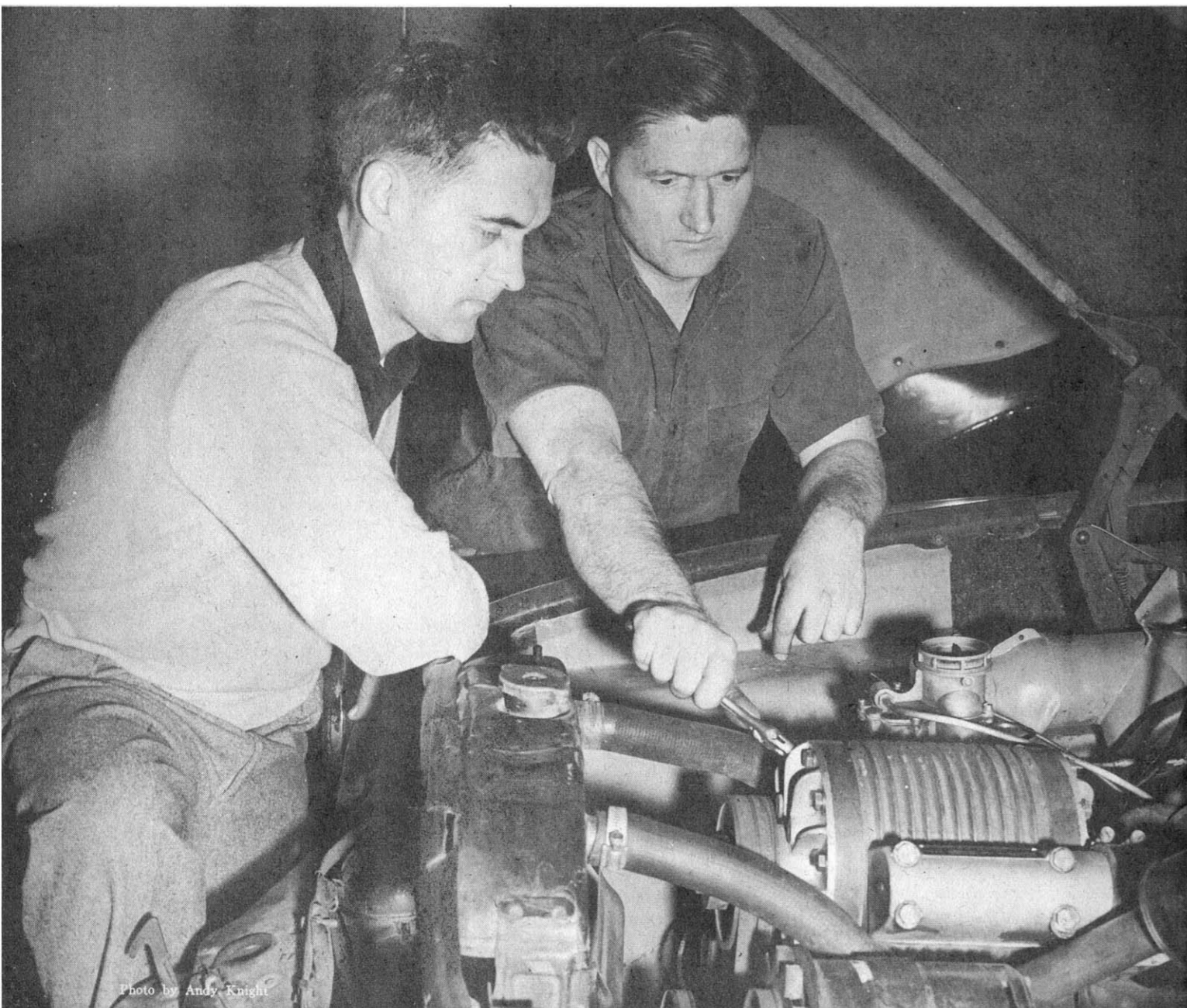
**8. Replace the stock main metering jets in the carburetor with the jets furnished in the Judson installation kit as shown here. Then bolt the carburetor to the supercharger.**



**9. Connect throttle linkage and choke control of the kit to carburetor. Connect the gas line and vacuum operated windshield wipers, as directed. Mount the air cleaner.**

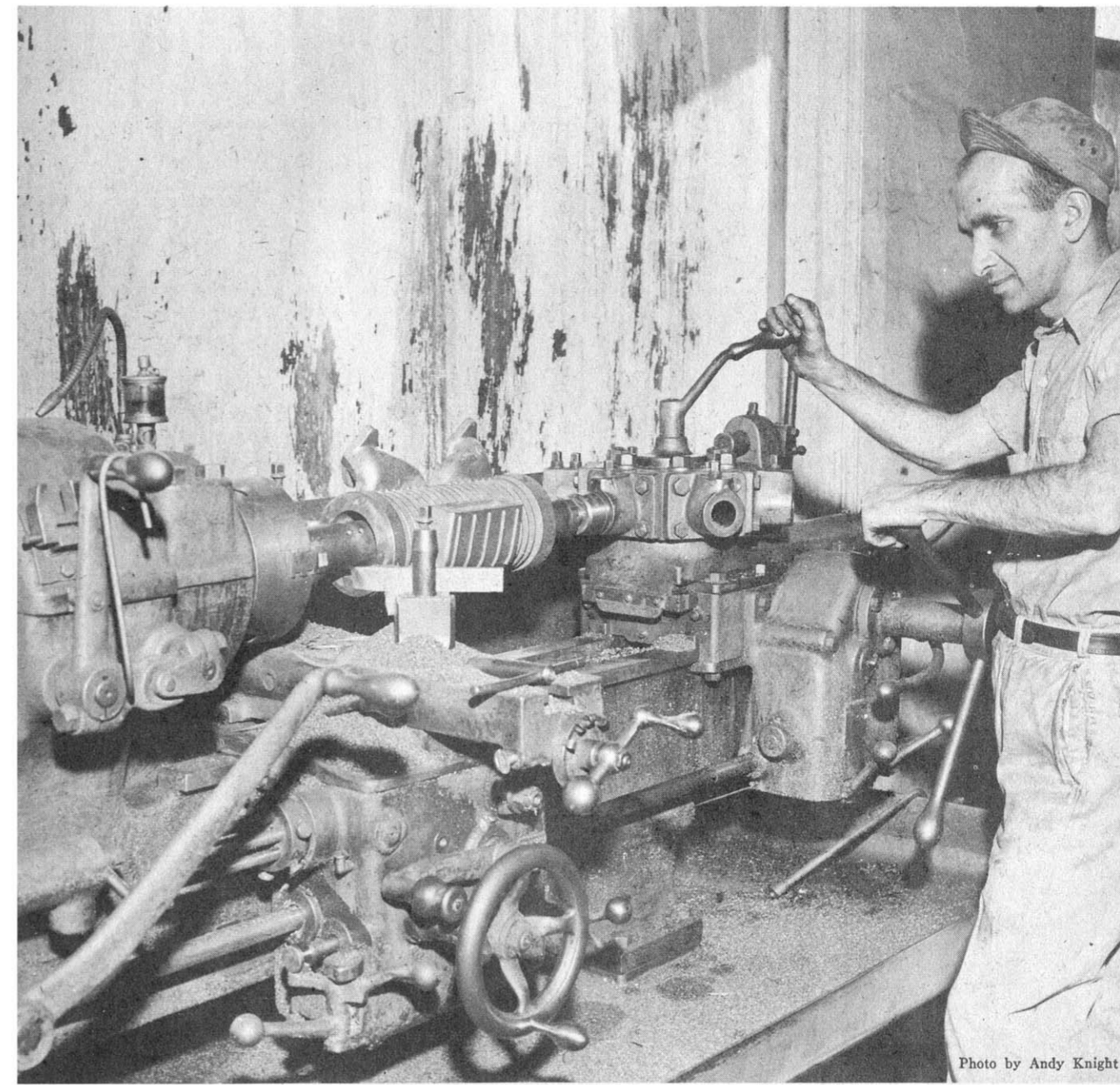


**10. Mount lubricator on firewall, connect the oil line to supercharger, fill lubricator with one quart of oil, start the engine and adjust as directed. Installation is done.**



*Photo by Andy Knight*

**In their plant at Conshohocken, Pa., brothers Charles A. Judson (left) and W. Haddon Judson, put the final touches on the installation of a Judson Supercharger in a Ford. The supercharger requires no attention other than an occasional oil check.**



*Photo by Andy Knight*

**Morris Taormina, an employe of the Judson Research and Manufacturing Co., machines the main housing for a supercharger with the precision that is so important. Judson Supercharger installation is designed to give more power and performance.**