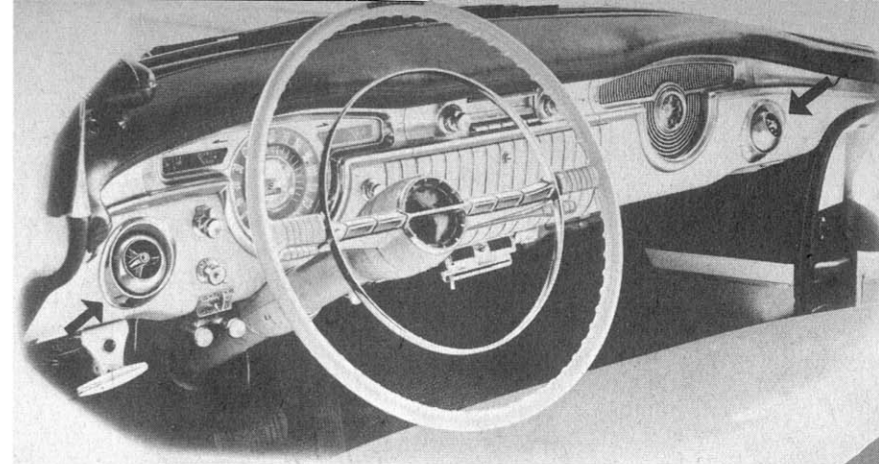
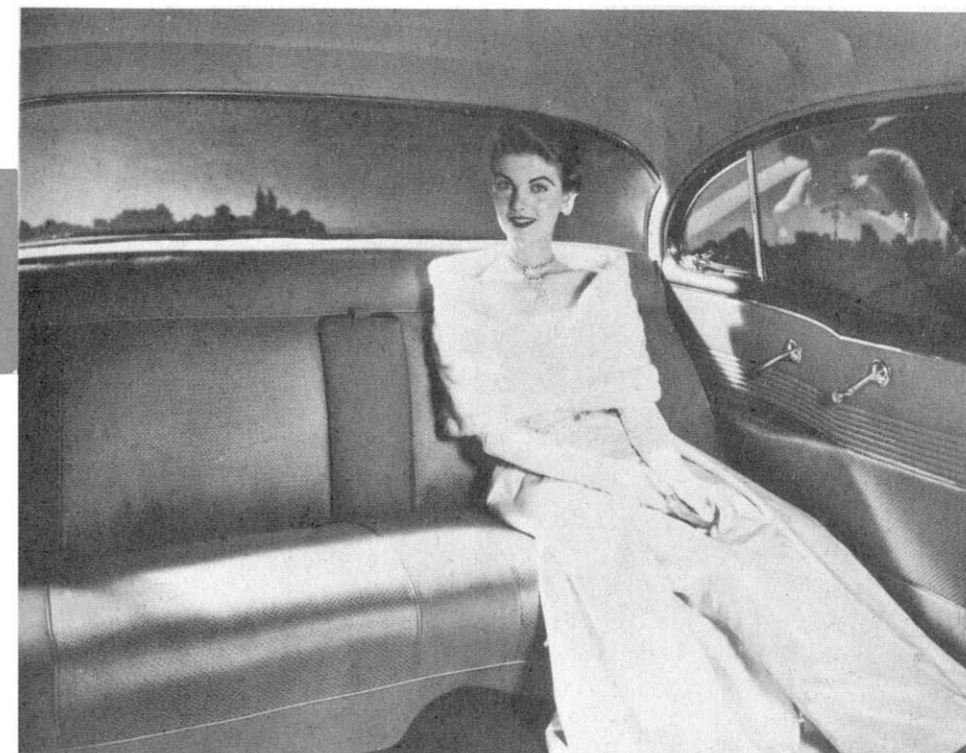


Flying colors are featured for the exterior of the 1955 Oldsmobile '88' Holiday coupe. The hood, upper body and roof are painted in one color, while the rear deck and lower body are finished in paint of a contrasting tone.



An air-conditioning system is offered as optional equipment. Housed entirely in the engine compartment, its air vents are incorporated in the instrument panel beside the front doors.



Luxurious upholstery, smart panel trim and foam-rubber backed deep-pile carpeting enhance the interior of the '98' four-door sedan. Arm rest can be pulled forward.

Auto
Review

1955 Oldsmobile

Auto
Review

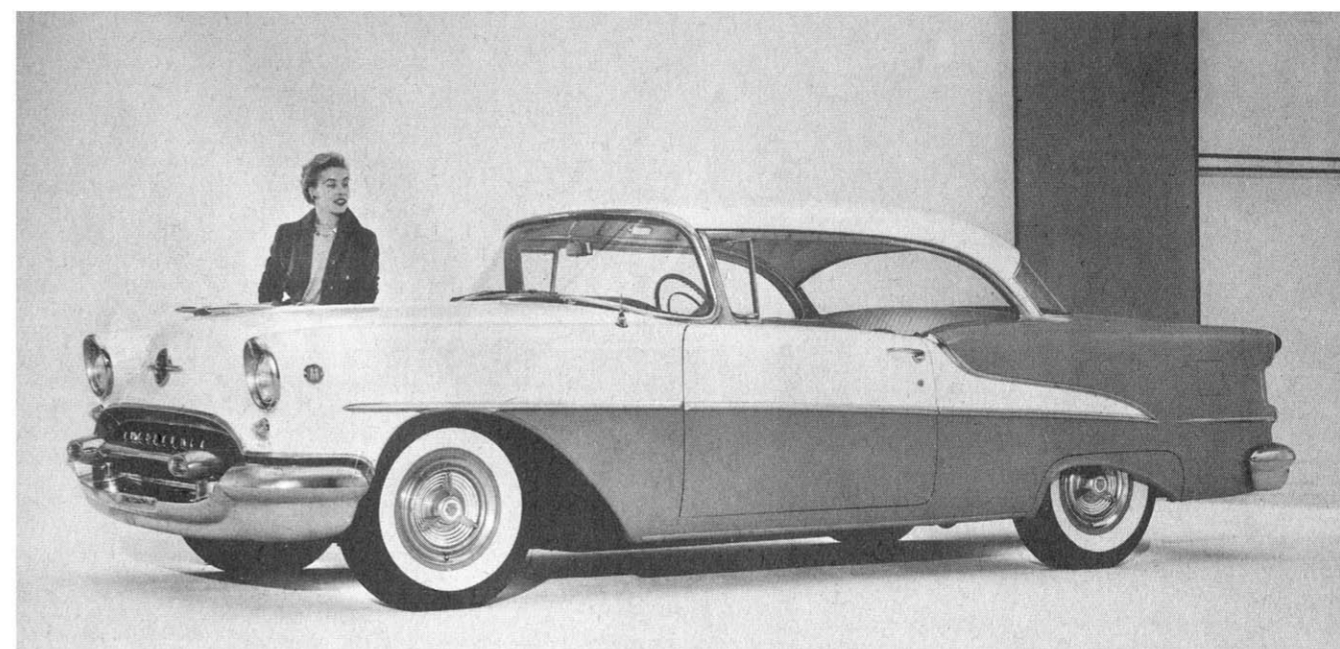
OLDSMOBILE for 1955 presents a new and more advanced concept of two-tone body color, important engineering improvements and a completely restyled appearance. The luxurious '98' series and the high performance Super '88' series both are powered by a more efficient 202-horsepower Rocket engine with 8.5 to 1 compression ratio. Improvement of Rocket engine power, torque and performance has been achieved through newly designed combustion chambers, higher lift camshaft and valves, larger exhaust valves, cooler operating spark plugs and full chrome piston rings.

The popular low silhouette and wide vision panoramic windshield are enhanced by the flying colors styling that Oldsmobile designers have incorporated in the 1955 models. Three series of cars with a total of ten body types are again presented. There are three Fisher body styles in the '98' series—a four-door sedan, the deluxe Holiday coupe and the Starfire convertible. The Super '88' series has four body types—the four-door sedan, two-door sedan, Holiday coupe and convertible coupe. In the economy-priced '88' series are the four-door sedan, Holiday coupe and two-door sedan.

Riding qualities have been improved through the use of direct-acting shock absorbers that are mounted vertically within the springs and attached directly to the frame and lower control arm.



Entirely new front end styling marks the 1955 Oldsmobile. Contour of the front bumper has been redesigned to harmonize with the styling, headlights have been recessed and parking lights are bullet-shaped. Hood sports a new world emblem.



The Super '88' Holiday coupe has new power to accompany its sweeping lines. Performance of the Rocket engine is improved and horsepower has been increased to 202 hp. in the Super '88' and the '98.' The '88' series have a 185-hp. Rocket engine.