



The fabulous Ford Thunderbird which has captured the fancy of America with its long, low exciting styling and its split-second Trigger-Torque power, has set the pace for all '55 Fords.

There's a touch of Thunderbird in every **FORD**

● The way it looks . . . the way it goes . . . the way it's built . . . *everything* about the 1955 Ford shows it was cut from the same cloth as the heart-stealing Thunderbird.

You'll see the resemblance in the graceful flair of Ford's long, low lines . . . and in the skillful harmonizing of interior colors.

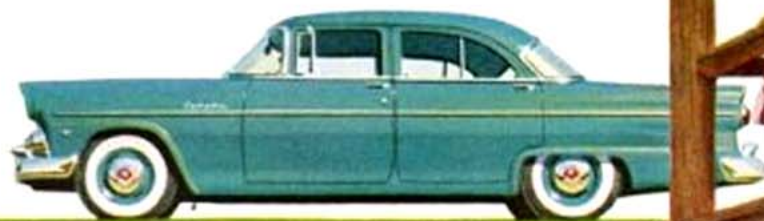
You'll feel the kinship in the reflex-quick obedience of Ford's Trigger-Torque power

. . . split-second response that makes you feel safer when accelerating, passing and under all driving conditions.

You'll also experience Thunderbird-like ease of handling with Ford's Ball-Joint suspension. You'll find what a smooth difference Ford's Angle-Poised ride makes on all roads.

You'll know how well a Ford is designed and built, too! For Ford shares the same kind of engineering, the same quality standards that have won first place for the Thunderbird in the hearts of so many.

It has that Thunderbird look from stem to stern! You can see the relationship in Ford's low silhouette, visored headlights, distinctive tail fins . . . everywhere.



It has Thunderbird "GO" in your choice of two mighty Y-block V-8 engines and the power-packed I-block Six. Each of them offers Trigger-Torque response . . . "GO" that obeys your commands "reflex-quick."

Treat yourself to a Trigger-Torque Test Drive TODAY!