

**THE NEW**

**AMERICAN MOTORS**

**REBEL**

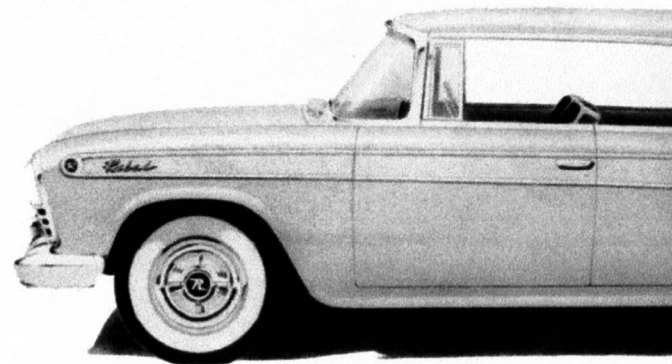


**FEATURING**



**ELECTRONIC FUEL INJECTION**

HIGH PERFORMANCE, HIGH S



The Rambler Rebel is a dynamic expression of she hardtop seating six people in luxurious comfort. tional simplicity. Highlighted by a full length ins subtle silver-gray body color harmonizes perfectly color scheme that belongs to the Rebel alone. Bene alleled strength and three dimensional safety—built which saves hundreds of pounds of weight and co rattles. Truly, the Rebel is a rugged performer in

**SUSPENSION:** Special direct acting heavy duty coil springs located above the center of gravity provide sure-footed roadability and positive stability at all speeds. Coil springs and special aircraft type shock absorbers on all four wheels give a controlled ride with comfort and safety unmatched by any other automobile.

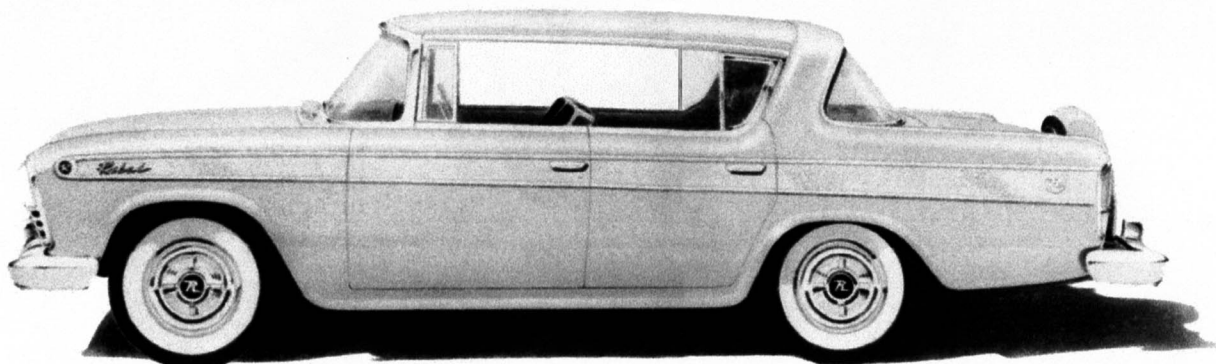
**DRIVE LINE:** The Rambler Rebel drive line is of fully integrated torque tube design in which the power is transmitted directly to the rear wheels—not through springs. Of vital importance to a car with the Rebel's power, the torque tube minimizes "wind-up" of the rear springs which causes the tires to break traction under fast acceleration. Thus, the torque tube drive line insures that the power is fully used at the rear wheels.

✓ The mounting sound of unleashed power—a flash of bur-nished gold—and the Rambler Rebel is suddenly a streak of silver disappearing in the far distance. The amazing performance and agility of the Rebel is derived from a combination of maximum power with compact size and minimum weight. And yet, for the first time, this new kind of blazing performance is available in a six passenger automobile with all of the comfort and luxury found only in larger and heavier cars.

The Rebel is a most unusual automobile—with the new electronic fuel injection system, it has the most horse-power per pound of any compact six passenger American automobile—it has a close-coupled wheelbase and unique suspension for unequalled handling ease and maneuverability—it has rock-solid single unit body construction to absorb the stresses imposed by the tremendous power of the 327 cubic inch V-8 powerplant. Yes, the Rambler Rebel is an unusual automobile—there is nothing quite like it—just try it and find out for yourself.

HIGH PERFORMANCE, HIGH STYLE . . . . WITH SAFETY

## THE REBEL POWERPLANT



The incredible performance of the Rambler Rebel begins with the blazing power of its large 327 cubic inch V-8 engine. Available with either four-barrel carburetion or optional electronic fuel injection, this powerplant is of the latest and most advanced short stroke design. From its overhead valves to its dual exhaust system, this engine is engineered to give lightning response to every demand.

**TRANSMISSION:** The Rebel is available with the efficient smoothness of the Flashaway Hydra-Matic or with the exciting performance of automatic overdrive—the choice is yours.

The Rambler Rebel is a dynamic expression of sheer power embodied in a compact four-door hardtop seating six people in luxurious comfort. Its distinctive appearance is one of functional simplicity. Highlighted by a full length inset of bronze-gold anodized aluminum, the subtle silver-gray body color harmonizes perfectly with the special silver and black interior color scheme that belongs to the Rebel alone. Beneath its striking beauty is a body of unparalleled strength and three dimensional safety—built on the single unit principle of construction which saves hundreds of pounds of weight and completely eliminates body-bolt squeaks and rattles. Truly, the Rebel is a rugged performer in which power and beauty are synonymous.

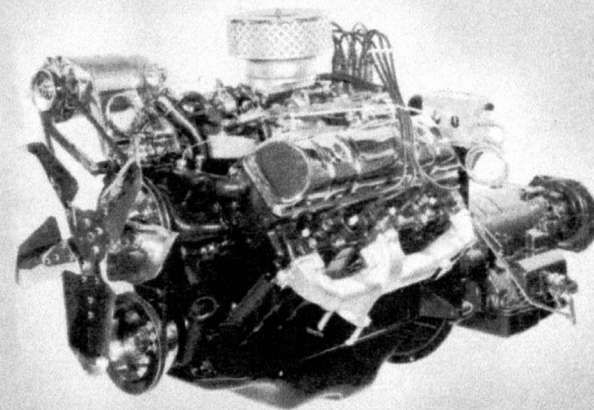
**SUSPENSION:** Special direct acting heavy duty coil springs located above the center of gravity provide sure-footed roadability and positive stability at all speeds. Coil springs and special aircraft type shock absorbers on all four wheels give a controlled ride with comfort and safety unmatched by any other automobile.

**DRIVE LINE:** The Rambler Rebel drive line is of fully integrated torque tube design in which the power is transmitted directly to the rear wheels—not through springs. Of vital importance to a car with the Rebel's power, the torque tube minimizes "wind-up" of the rear springs which causes the tires to break traction under fast acceleration. Thus, the torque tube drive line insures that the power is fully used at the rear wheels.

**STEERING:** Short turning radius, wide tread, and effortless steering of the Rebel total up to cat-like agility far beyond the capabilities of larger and heavier automobiles. Direct-acting hydraulic power steering provides precision straight line control and effortless cornering—yet the driver retains the "feel" of the car at all times.

**BRAKES:** Precision and dependability in stopping is of utmost importance in a car of the Rebel's tremendous performance. High capacity brakes are of the self-energizing servo-action type with specially designed flanged drums to quickly dissipate heat and maintain high efficiency under hard usage. Power assist permits brake applications in 25% less time with 40% less effort.

**288 HP**



**ELECTRONIC FUEL INJECTION:** The Bendix Electrojector system of electronic fuel injection is an advanced and revolutionary method in which an electronic brain accurately senses engine requirements and relays instantaneous commands to the injectors. The Electrojector system greatly increases power and torque in addition to providing quicker throttle response and engine warm-up, and yet it is relatively simple and eliminates the critical dirt problem.

# Specifications

## ENGINE

Type	V-8, Overhead Valve
Bore and Stroke	4" x 3 1/4"
Displacement	327 cu. in.
Compression Ratio	9.5:1
Horsepower:	
Fuel Injection	288 HP
4-Barrel Carburetion	255 HP
Torque:	
Fuel Injection	350 Lbs. Ft.
4-Barrel Carburetion	345 Lbs. Ft.

## BODY

Style	4-Door Hardtop Sedan
Length	198.89"
Width	71.32"
Height	58.4"
Wheelbase	108"
Seat Width	59.75" Front .. 60.10" Rear
Headroom	36" Front .. 35" Rear
Shipping Weight	3310 Lbs. (Est.)

## CHASSIS

Tread	57 3/4" Front... 58" Rear
Tire Size (tubeless)	6.70 x 15-4 ply Nylon Cord
Turning Diameter	37 1/2 Ft.



AMERICAN MOTORS CORPORATION RESERVES THE RIGHT TO MAKE ANY CHANGES OR IMPROVEMENTS IN ITS PRODUCTS WITHOUT INCURRING ANY LIABILITY OR OBLIGATIONS WHATSOEVER, AND WITHOUT BEING REQUIRED TO MAKE ANY CORRESPONDING CHANGES OR IMPROVEMENTS ON PRODUCTS THEREFORE MANUFACTURED OR SOLD.

# Specifications

## ENGINE

Type..... V-8, Overhead Valve  
Bore and Stroke..... 4" x 3 1/4"  
Displacement..... 327 cu. in.  
Compression Ratio..... 9.5:1  
Horsepower:  
    Fuel Injection..... 288 HP  
    4-Barrel Carburetion..... 255 HP  
Torque:  
    Fuel Injection..... 350 Lbs. Ft.  
    4-Barrel Carburetion..... 345 Lbs. Ft.

## BODY

Style..... 4-Door Hardtop Sedan  
Length..... 198.89"  
Width..... 71.32"  
Height..... 58.4"  
Wheelbase..... 108"  
Seat Width..... 59.75" Front .. 60.10" Rear  
Headroom..... 36" Front..... 35" Rear  
Shipping Weight..... 3310 Lbs. (Est.)

## CHASSIS

Tread..... 57 3/4" Front... 58" Rear  
Tire Size (tubeless) .. 6.70 x 15-4 ply Nylon Cord  
Turning Diameter..... 37 1/2 Ft.



AMERICAN MOTORS CORPORATION RESERVES THE RIGHT TO MAKE ANY CHANGES OR IMPROVEMENTS IN ITS PRODUCTS WITHOUT INCURRING ANY LIABILITY OR OBLIGATIONS WHATSOEVER, AND WITHOUT BEING REQUIRED TO MAKE ANY CORRESPONDING CHANGES OR IMPROVEMENTS ON PRODUCTS THEREFORE MANUFACTURED OR SOLD.

# THE NEW

# AMERICAN MOTORS

# REBEL

## FEATURING



## ELECTRONIC FUEL INJECTION

# Specifications

✓ The mounting sound of unleashed power—a flash of burnished gold—and the Rambler Rebel is suddenly a streak of silver disappearing in the far distance. The amazing performance and agility of the Rebel is derived from a combination of maximum power with compact size and minimum weight. And yet, for the first time, this new kind of blazing performance is available in a six passenger automobile with all of the comfort and luxury found only in larger and heavier cars.

The Rebel is a most unusual automobile—with the new electronic fuel injection system, it has the most horsepower per pound of any compact six passenger American automobile—it has a close-coupled wheelbase and unique suspension for unequalled handling ease and maneuverability—it has rock-solid single unit body construction to absorb the stresses imposed by the tremendous power of the 327 cubic inch V-8 powerplant. Yes, the Rambler Rebel is an unusual automobile—there is nothing quite like it—just try it and find out for yourself.

## ENGINE

Type..... V-8, Overhead Valve  
Bore and Stroke..... 4" x 3 1/4"  
Displacement..... 327 cu. in.  
Compression Ratio..... 9.5:1  
Horsepower:  
Fuel Injection..... 288 HP  
4-Barrel Carburetion..... 255 HP  
Torque:  
Fuel Injection..... 350 Lbs. Ft.  
4-Barrel Carburetion..... 345 Lbs. Ft.

## BODY

Style..... 4-Door Hardtop Sedan  
Length..... 198.89"  
Width..... 71.32"  
Height..... 58.4"  
Wheelbase..... 108"  
Seat Width..... 59.75" Front .. 60.10" Rear  
Headroom..... 36" Front..... 35" Rear  
Shipping Weight..... 3310 Lbs. (Est.)

## CHASSIS

Tread..... 57 3/4" Front... 58" Rear  
Tire Size (tubeless)... 6.70 x 15-4 ply Nylon Cord  
Turning Diameter..... 37 1/2 Ft.



AMERICAN MOTORS CORPORATION RESERVES THE RIGHT TO MAKE ANY CHANGES OR IMPROVEMENTS IN ITS PRODUCTS WITHOUT INCURRING ANY LIABILITY OR OBLIGATIONS WHATSOEVER, AND WITHOUT BEING REQUIRED TO MAKE ANY CORRESPONDING CHANGES OR IMPROVEMENTS ON PRODUCTS THEREFORE MANUFACTURED OR SOLD.

## THE NEW

## AMERICAN MOTORS

# REBEL

## FEATURING



## ELECTRONIC FUEL INJECTION