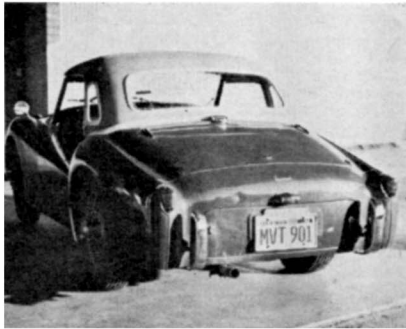




what's new?

What's new? . . . This column, for one thing! We receive releases from all over the world offering many ideas on "things the motorist can't do without"—items from red lights on the dash that light when you hit a bump to home dyna-

meters that you can install in your own garage. But occasionally a product appears that is not only a good idea, but also practical. We plan to present these products and ideas to you as a regular SCI feature.



ALL-WEATHER TOP

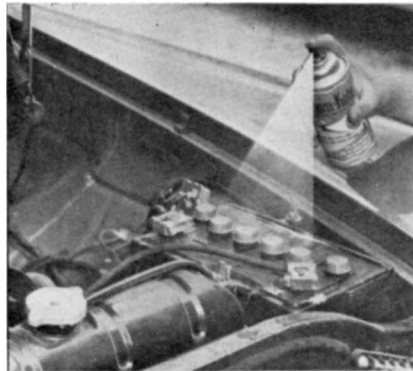
Fiberglas "SCOTTOP" for TRIUMPH TR2 and TR3—Two layers of heavy glass cloth and one layer of two ounce mat comprise this new hardtop which weighs a mere 24 pounds. The top attaches with three fasteners at the front bow, and two at the rear sides just behind the door openings. It is not necessary to drill holes to accommodate these fasteners. The bottom of the back edge is sealed to the body of the car with special white or black rubber extrusion which carries through around the window openings.

GOOD READING

Just out, and good reading for the sports car owner and/or fan is the four-volume edition of Motor Manuals by Arthur W. Judge, published by Robert Bentley, Inc. Each of the four volumes (Auto Engines; Carburetors and Fuel Injection Systems; Mechanism of the Car; Car Maintenance and Repair) is fully illustrated.

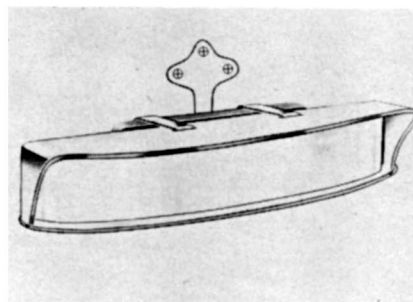
FROM FIRES TO TIRES

"Spare tire in a can" is a most descriptive name for an accessory recently introduced by Liquid Glaze, Inc. Appropriately called "SPAIRE" it not only inflates an average sized tire from zero up to 22 pounds in six seconds, but it also provides motorists with an effective fire extinguisher. This protection is in a pressure can with hose assembly and convenient bracket. "SPAIRE" is also effective in rectifying fuel pump and fuel line vapor lock, and dries up condensation on spark plugs, distributor, and wiring.



SPRAY SEALANT

Another new spray-type product is BOM-KOTE AUTOMOTIVE SPRAY SEAL. This colorless preservative, when applied to battery and ignition systems prevents corrosion and resists acid solutions. It is no longer necessary to smear the battery terminals with grease to protect them. BOM-KOTE also resists salt water and heat, discouraging oxidation.



ALL OVER THE BACK

Sta-Dri Products chrome-trimmed giant mirror slips over the rear-view mirror of all cars, to give a true reflection of all the traffic at the rear. Without twisting or turning, the driver is provided all-around vision that encompasses some of the side-rear areas normally difficult to observe.

SEBRING AT HOME

Exciting on the spot interviews with Fangio, Moss, Portago, Colin Chapman and many others relive the high moments of the great Sebring Race of 1957. These are featured on Riverside Record's new album SOUNDS OF SEBRING 1957. The album contains two twelve-inch LPs and was cut with Hi-Fi enthusiasts in mind.

FLEXIBLE PAINT

RAM COTE, famous for "new leather color in a spray can," has now introduced a flexible paint. This paint can be applied with a brush to leather, leatherette and vinyl, and create a "re-finished" effect. It leaves a durable, non-bleeding finish as flexible as the leather itself, and it resists mildew and alkalis, heat and cold, salt air and alcohol.



TERRIFIC TUMBLERS

For after the race, Vilem B. Haan has designed a 14 oz. tumbler set decorated with 40 different foreign and sports car emblems in 14k gold outlined in black. The glasses feature a heavy bottom which helps prevent spilling, and come in either sets of 4 or 8 glasses.