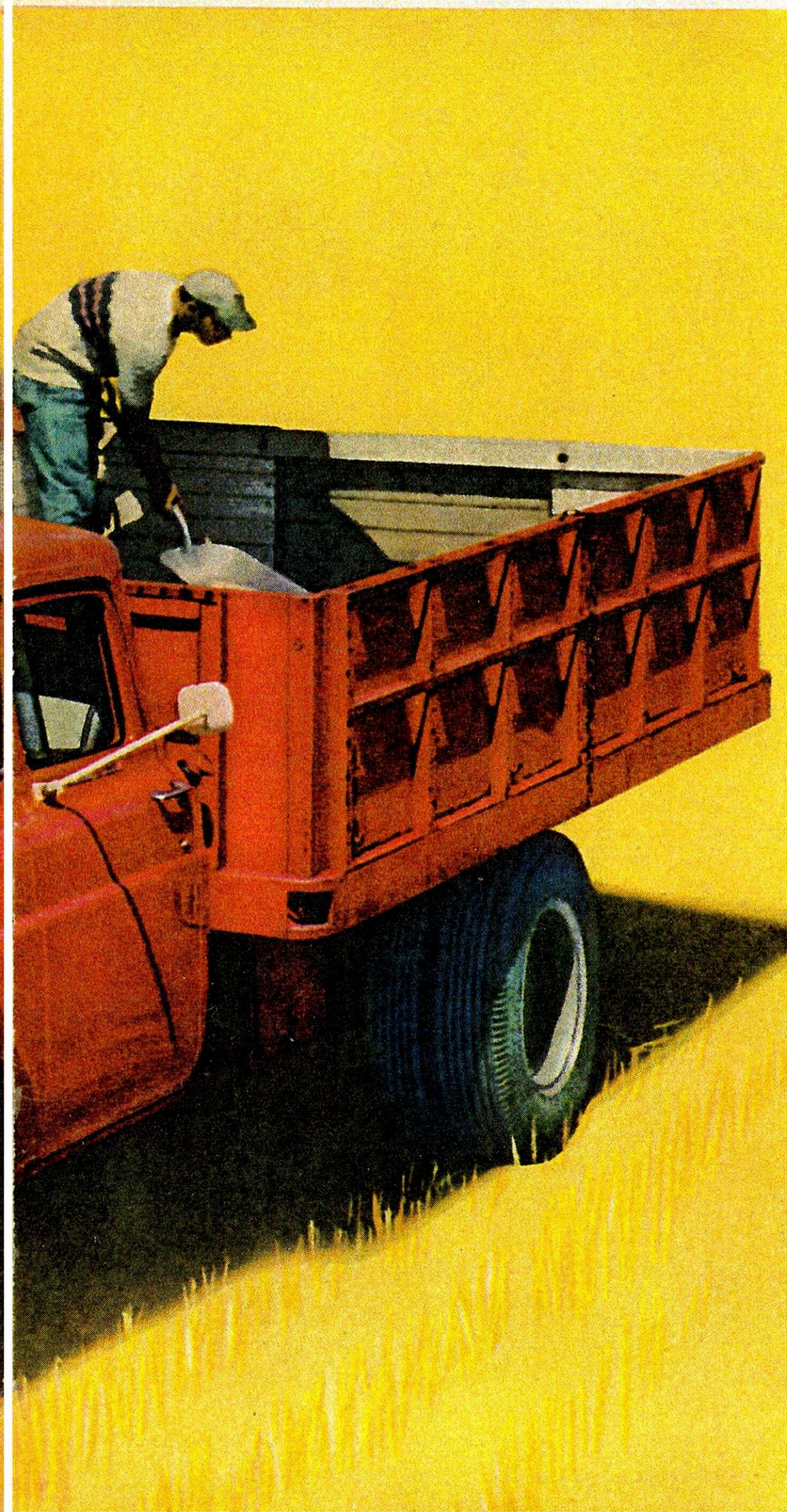
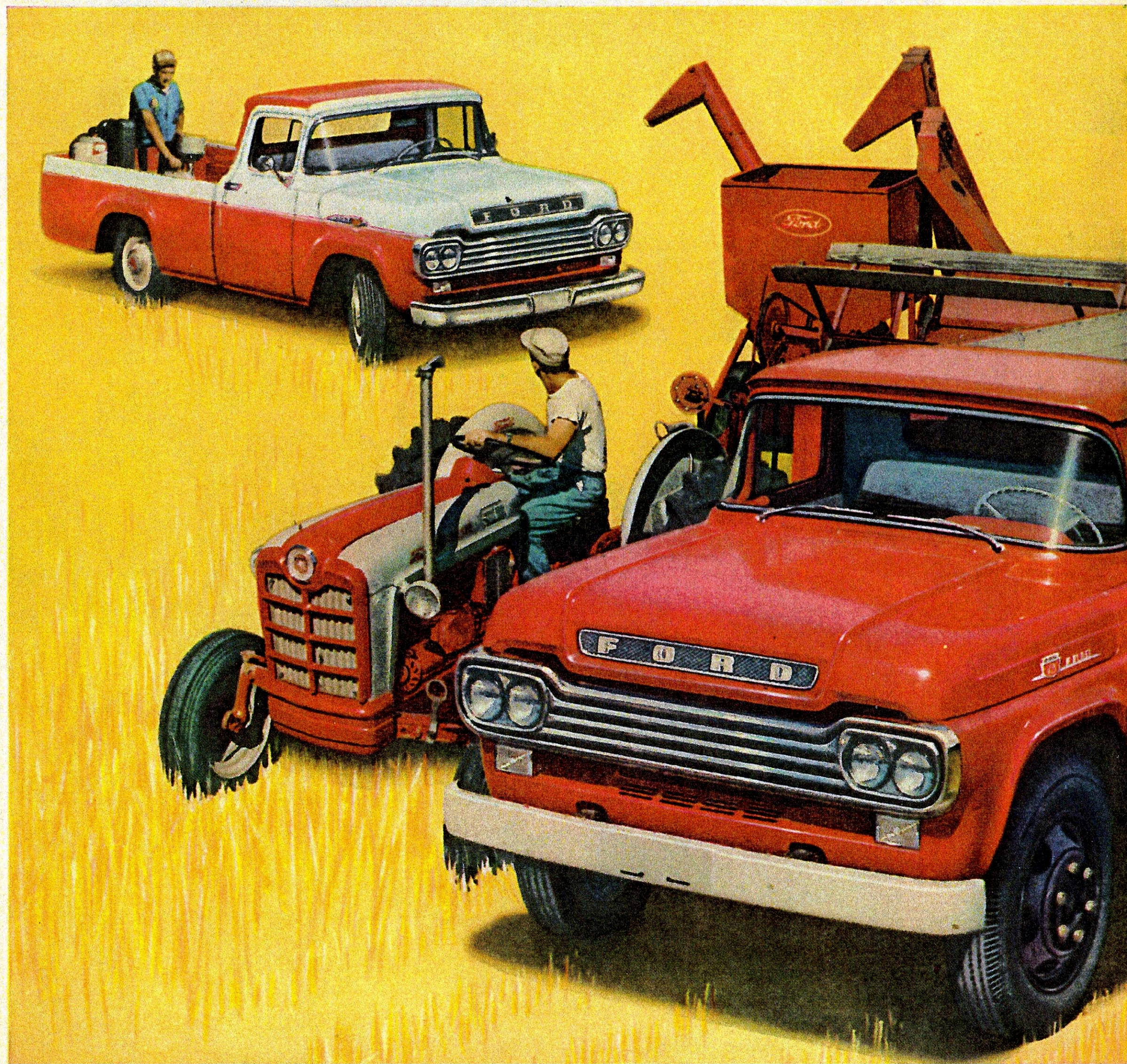


GO FORD-WARD

It's the wisest move a farmer

for savings

can make... here's why:



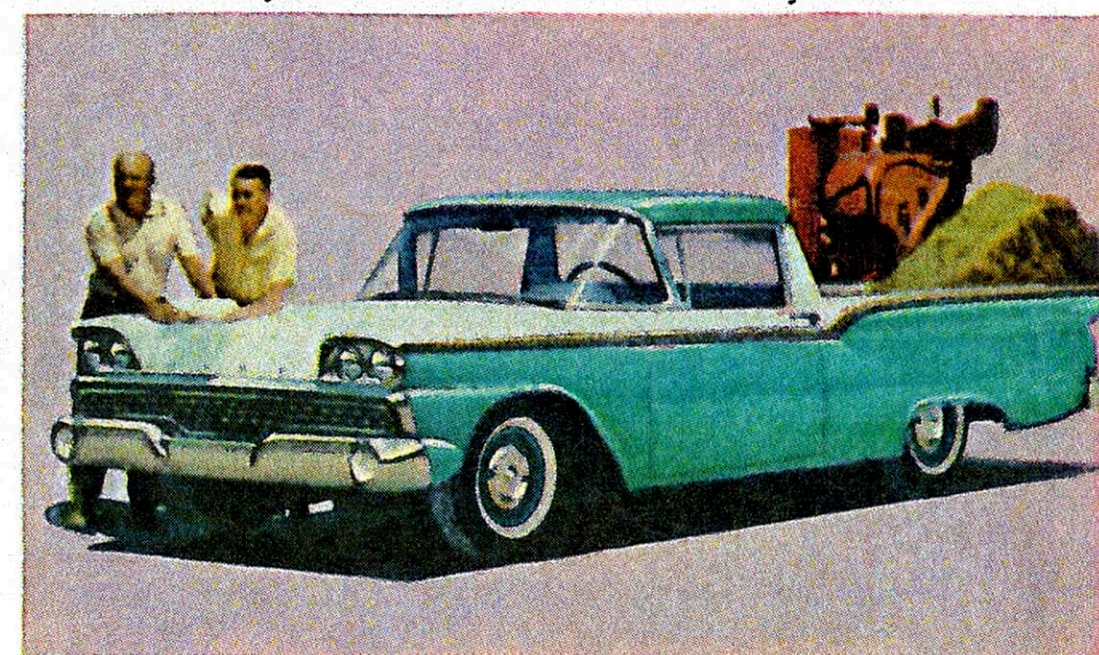
When you join the *Ford-ward* march to savings, you're in knowing company, for this year farmers find more reasons than ever to be ahead with Ford Trucks.

You'll find new, go-anywhere 4-wheel drive pickups . . . new gas economy in the industry's most modern 6-cylinder engines . . . new durability in the 2-tonner that leads all others in payload capacity . . . a wider choice of transmissions . . . smoothest ride of any 1/2-ton pickup. And, for the 13th straight year, independent insurance studies prove that Ford Trucks last longer! See your Ford Dealer and go *Ford-ward* for savings!



▲ NEW 4-WHEEL DRIVE. NEW RANCHERO. Hauls over half a ton with ease, yet rides and handles exactly like a fine car! And for '59, there's new style, increased loadspace, improved gas economy! ▼

Every Ford has SAFETY GLASS In every window



'59 FORD STYLESIDE. Features cab-wide box for greater carrying capacity . . . box girder construction for lasting rigidity, strength . . . and its low loading height and flush sides make side loading easier than ever before.

'59 FORD F-600. Toughest 2-tonner in the field! Gives you highest payload rating of any 2-ton truck, plus an optional 6,000-lb. front axle for even greater capacity! Widest choice of Short Stroke power, too!

FORD

TRUCKS COST LESS

LESS TO OWN . . .
LESS TO RUN . . .
LAST LONGER, TOO!