



FOLD-DOWN tailgate features roll-down rear window with power operation standard on three-seat and optional on two-seat models. Rubber bumper steps ease entrance to rear.

has a new folding mechanism which carries the cargo floor all the way to the back of the front seat.

One big optional feature is a hidden luggage compartment for valuables which can be locked to discourage theft.

Most other features of the Valiant wagon are identical to those of its sedan cousin. They share the same wheelbase (106.5 inches) and unit body construction meth-

THE VALIANT WAGON

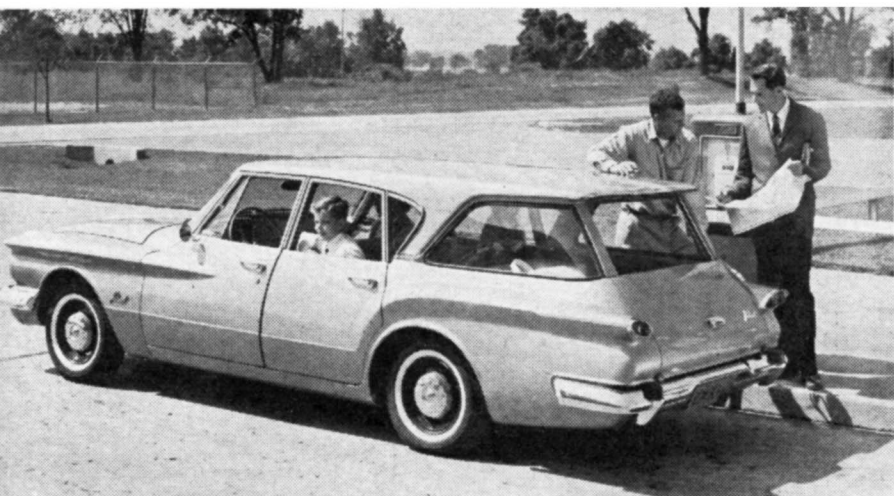
**Chrysler's compact unveils
a carry-all version**

LAST of the new small cars to be announced, Chrysler's Valiant is the first of the lot to present a station wagon model. Known as the Suburban, this wagon is offered with standard or deluxe trim in either two- or three-seat versions.

With cargo area seats down the wagon

has a storage capacity of 72 cubic feet. All models have four doors and fold-down tailgates. Power operation of the tailgate window is standard on all three-seat versions; optional on the others. The rear-facing third seat folds flat with the floor as does the front-facing second which also

od. Power is provided by the new inclined six-cylinder engine (101 hp and 155 lbs. of torque). A floor-mounted three-speed manual shift is standard while a three-speed pushbutton automatic is optional. Power steering and power brakes are included in the extra cost accessories. ●



ALL VALIANT WAGONS are built with four doors and share unit body construction method and inclined six-cylinder powerplant with the previously announced sedan. Overall height is 53.4 inches, only one-tenth of an inch higher than sedan.



STYLING of the wagon is in the current tradition which seems to aim for the effect of a four-door sedan with a large porch welded to its rear end.